

TCB

**GRANT OF EQUIPMENT
AUTHORIZATION
Certification
Issued Under the Authority of the
Federal Communications Commission
By:**

TCB

Advanced Compliance Solutions,
Inc.
5015 B.W. Bowman Drive
Buford, GA 30518

Date of Grant: 02/04/2015
Application Dated: 02/04/2015

Landis+Gyr Technologies, LLC
6406 County Rd 11
Piquet Lakes, MN 56472

Attention: Carl Jacob, Hardware Test Engineer

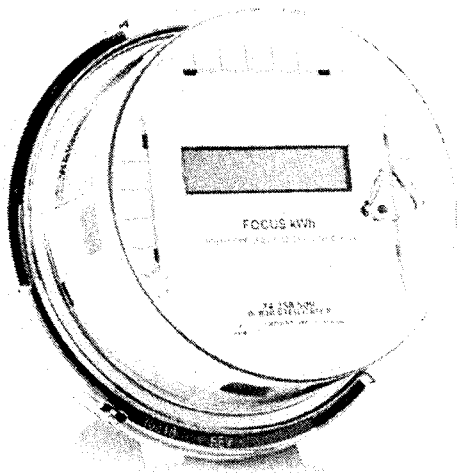
NOT TRANSFERABLE

EQUIPMENT AUTHORIZATION is hereby issued to the named
GRANTEE, and is **VALID ONLY** for the equipment identified hereon
for use under the Commission's Rules and Regulations listed below.

**FCC
IDENTIFIER:** TEB-HUNTSUB25
Name of Grantee: Landis+Gyr Technologies, LLC
Equipment Class: Part 15 Spread Spectrum Transmitter
Notes: 2G 54e Girdstream
Modular Type: Single Modular

Grant Notes	FCC Rule Parts	Frequency Range (MHz)	Output Watts	Frequency Tolerance	Emission Designator
	15C	902.0 - 928.0	0.257		

**Class II Change to add new antenna type/height configuration as described
in this filing. New antenna limited to professional installation only.**



Residential:
E130 FOCUS AL

Landis+Gyr
Manage energy better

Durability and Reliability Meet Advanced Residential Metering

Overview

The FOCUS® family of meters delivers an advanced, reliable and economical solid-state platform for advanced metering applications. Designed for the utmost in reliability and better overall endpoint performance, the FOCUS AL uses minimal parts and connectors. Its over-sized innovative single circuit board design provides the flexibility to install a modular communications board or KYZ option output board. And with highly accurate load performance and the use of a field-proven Digital Multiplication Measurement Technique, the FOCUS AL assures dependable and consistent operation over its lifetime.

QUICK AND EASY RECONFIGURATION STEPS:

- Locate the configuration port on the front cover
- Select from positive, negative, net and added (security) metrics
- Change displayed information, order or digits
- Configure a CT/PT meter multiplier to obtain a direct reading
- Preset or reset kWh

FEATURES & BENEFITS:

Why Landis+Gyr makes a difference.

- Bidirectional metering enables distributed energy, solar/wind and cogeneration applications
- Enhanced security
- 100+ year non-volatile memory
- Designed for a 20+ year life
- Surpasses ANSI requirements for surge protection (10104) and meter accuracy
- Low-resistance, single-piece current coil avoids problematic heat
- Ease of AMI integration

Product Specifications: **E130 FOCUS AL**

Specifications

General Specifications	Active Energy "kWh-only" meter	
	Digital Multiplication Measurement Technique	
	Non-Volatile Memory	
	Designed for 20+ years life	
	Meets ANSI standards for performance	
	Utilizes ANSI protocol (between meter and AMI device)	
	8-Digit LCD	
	Display scroll sequence programmable (factory or end user)	
Configuration Port – cover does not have to be removed		
Operating Temperature	-40C to +85C under cover	
Nominal Voltage	120V or 240V	
Operating Voltage	80% to 115% of Vn	
Frequency	60Hz +/- 5%	
Humidity	5% to 95% relative humidity, non condensing	
Starting Load (Watts)	Class 20	0.005 Amp (0.6W)
	Class 100	0.030 Amp (3.6W)
	Class 200	0.050 Amp (12W)
	Class 320	0.080 Amp (19.2W)
	Class 480	0.120 Amp (28.8W)
Voltage Burden	< 1.8W Max	
Load Performance Accuracy	Accuracy Class 0.5% – typical accuracy 0.2%	
Available Forms	Self-Contained	1S, 2S, 2SE, 12S, 25S
	Transformer Rated	3S, 4S
	K-Base	2K
Display Options	Energy Metrics: +kWh, -kWh, Net kWh, and added kWh (Security)	
	Metric Energy Display Format – 4x1, 4x10, 5x1, 5x10, 6x1 or 6x10	
AMI Platform	Modular or Integrated	
Selectable Meter Multiplier	Up to 240 as result of PT ratio • CT ratio	
Applicable Standards	ANSI C12.1 for electric meters	
	ANSI C12.10 for physical aspects of watt hour meters	
	ANSI C12.19 Utility Industry End Device Data Tables	
	ANSI C12.20 for electricity meters, 0.2 and 0.5 accuracy classes	
	CAN3-C17-M84 Canadian specifications for approval of type of electricity meters	
International Certifications	LAPEM (Mexico) Certification # K3112-12-E/4114, 4115 and 4116	
	Measurement Canada (MC) AE-1559	

Phone: **678.258.1500**

FAX: **678.258.1550**

landisgyr.com

EXHIBIT B

6.20.14

**Landis
Gyr**
imagine energy better