



Office of the Public Counsel
Governor Office Bldg. Suite 650
200 Madison Street
P.O. Box 2230
Jefferson City, Missouri 65102

Telephone: 573-751-4857
Facsimile: 573-751-5562
Web: <http://www.mo-opc.org>
Relay Missouri
1-800-735-2966 TDD
1-800-735-2466 Voice

MEMORANDUM

TO: Kim Bolin, Public Utility Accountant
FROM: Mike Dandino, Senior Public Counsel
RE: Attorney Fees for the MGE Rate Case
DATE: July 19, 2004

This is in response to your request to review the rate charged for legal services in the MGE case by the law firm of Kasowitz, Benson, Torres & Friedman, New York, NY. Based upon my experience and information from the Missouri Bar regarding customary and usual rates charged for similar legal services in Missouri, it is my opinion that a rate of \$670 to \$690 per hour for office and trial work performed in the MGE Case No. 2004-0209 falls outside of a reasonable and prudent range. I considered the nature of the subject matter, the complexity of the issues litigated, the lack of any special or unique subject matter in the case and the absence of regulatory experience and regulatory expertise on behalf of the Partners of Kasowitz, Benson, Torres & Friedman that were billed to this case.

To give you some background on my experience, here is a short summary of my resume:

I am Senior Public Counsel for the Office of the Public Counsel and have held that position since January, 1995. I am a member in good standing of the Missouri Bar and have been an attorney since September, 1975. I am also a member of the bars of the Federal District Court for both the Eastern and Western District of Missouri, the U.S. Court of Appeals, Eighth Circuit, and the United States Supreme Court. I graduated from the University of Missouri-Kansas City School of Law in 1975 with a Juris Doctor degree.

I was employed as an attorney with the Jackson County Counselor's Office from 1975 to August of 1985. My duties included acting as counsel for a number of county administrative agencies. I also was responsible for the trial of cases on behalf of county officers and agencies before the Missouri State Tax Commission as well as in the circuit courts, the Missouri Courts of Appeal, and the Missouri Supreme Court.

From 1985 to 1990, I was General Counsel for Property Tax Research, a national property tax appeals firm. On behalf of PTR's clients, I retained local counsel in numerous states to provide legal advice as to property tax issues and procedure and to serve as local counsel for tax appeals. I reviewed charges for legal services billed by local counsel. PTR had extensive tax appeals in Missouri and so I regularly employed Missouri counsel with extensive trial and administrative experience and reviewed and approved the fees billed.

From 1990 to 1994, I was an associate attorney in the Wallach Law Firm located in St. Louis, Missouri. My duties included research and preparation of motions, briefs, pleadings, and trial preparation of condemnation, property tax appeals, business litigation, medical malpractice, and municipal law cases. Many of the cases I worked on were billed at an hourly rate.

As Senior Public Counsel, I have been responsible for the trial and conduct of telecommunications cases, and have assisted in the research and preparation of pleadings, motions, and briefs on a variety of regulatory issues before the Missouri Public Service Commission and the courts.

I am familiar with the expertise and experience of the members of the Brydon, Swearingen, & England law firm and know the members of that firm to be highly regarded counsel and trial attorneys in matters of public utility regulation before the Missouri Public Service Commission. Given the firm's reputation in the legal community and in particular in the Missouri regulatory bar that regularly practices before the Commission, I would consider the average hourly rate of \$190.00 charged by that firm in this case as a fair representation of customary, usual, and reasonable legal fees for regulatory office and trial work in the state of Missouri. That fee falls within the range of indicated fees for such legal services as indicated in the attached Missouri Bar Association study.

In conclusion, a \$670 to \$690 per hour fee for this case falls outside of the customary and usual range of hourly rates for regulatory legal work in Missouri. Please let me know if you need additional information.



THE MISSOURI BAR ECONOMIC SURVEY 2003

Special acknowledgement is appropriate for Missouri Bar members who took their valuable time to respond to the survey. Their prompt, candid responses allow this survey to be a credible resource for your use.

INTRODUCTION

The Missouri Bar is pleased to report the results of *The Missouri Bar Economic Survey – 2003*. The survey is a guide for Missouri lawyers to use as they plan and manage their work within the legal profession and their professional lives.

Since 1958, The Missouri Bar has conducted a survey every other year to gain insight into the economics of the practice of law in the state of Missouri. This **non-scientific** survey is a snapshot of the economic performance of the legal profession in Missouri as of December 31, 2002. The information in this survey should be used as a guide rather than as an absolute standard. The survey results should be considered and used in its entirety only in order to avoid misconstruing the meaning of individual exhibits within the report. For lawyers in the private practice of law, the information may be useful to evaluate their firm's performance relative to comparable law firms. With this information, Missouri lawyers in private practice may compare their firm's performance with those of similar size, by geographic location, and other similarities. Some sections of the survey include data from previous surveys presented in such a manner as to decipher trends over the past decade.

A portion of the survey also depicts economic information about Missouri lawyers who work in law-related and non-legal professions as well as data about difficulties experienced by Missouri lawyers that affected their work or satisfaction levels while working in the legal profession.

The confidential survey questionnaire was mailed to a **sampling of 3,250 Missouri Bar members** in the spring of 2003. **A total of 1,290 completed and returned the survey, which represents a 40% response rate.** The respondents were asked to provide information as of the close of business on December 31, 2002. Nearly 15,000 lawyers listing a Missouri address were licensed to practice law in the state of Missouri at the time of the survey.

The survey respondents consisted of 69.6% male and 30% female; 0.3% of the respondents did not indicate their gender. Survey respondents were voluntarily asked to indicate their race. 93.8% of the respondents indicated they were Caucasian; 2.2% African-American; 0.3% Hispanic; 0.4% Asian; 0.7% Other; 2.3% did not indicate their race. Close to 40.0% of respondents in private practice indicate that their primary area of practice is civil trial and/or appellate practice. The demographics closely mirror those from the previous survey taken in 2001.

Some survey results are divided by geographic locations, specifically St. Louis City, St. Louis County, Jackson County, Greene County, Boone County, and Cole County. Other locations are grouped into a category entitled "Others".

The surveys were collected, tabulated, and analyzed by the University of Missouri College of Arts and Science Economic and Policy Analysis Research Center in Columbia, Missouri.

STATISTICAL TERMS USED IN THE SURVEY

The **mean (arithmetic average)** is calculated by adding the values of all responses, then dividing by the number of responses.

The **median** is the middle value of a series (distribution) of values, which is initially, ranked (low to high, or vice versa). By definition, half of the numbers are greater and half are less than the median.

HOW TO READ THIS SURVEY

Charts and graphs are used whenever possible to present the information. Various correlations are made in order to assist the reader to further analyze the data.

Examples . . .

On page 42 of the Lawyers in Private Practice Section, you will see a chart concerning practice areas by hourly charge for trial work. In the Civil Trial Section, 61 respondents, representing 24.6% of those responding that they practice in this area, charge \$126-150 per hour for trial work.

On page 46 of the Lawyers in Private Practice Section, you will see a chart concerning median total income based on the number of years since being admitted to the practice of law. Those in the full-time practice of law in Missouri between the ages of 30 and 39 years reported a median income of \$160,000.

Notation:

Reference to **Total Income** in the survey indicates the total income reported by the respondents from **both** full-time and part-time income. **Full-Time Practice Income** does not include any additional part-time income considered in the respondents' total income.

HOW TO ACCESS A COPY OF THE SURVEY

The Missouri Bar Economic Survey is also available to Missouri Bar members on the Bar's website at www.mobar.org. It is required to log on to the Member's Only portion of the website, which requires a bar number and PIN. Missouri Bar members may request one printed copy at no charge.

Lawyers in Private Practice

Salaries, Fees, Overhead and Related

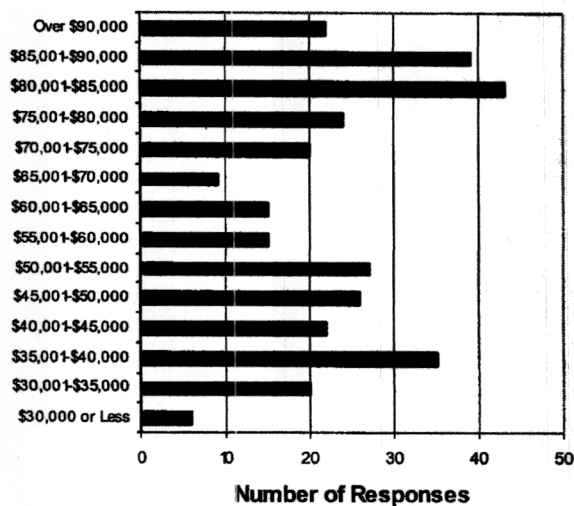
Salary of Newly Admitted Lawyer

	Responses	Percent
\$30,000 or Less	6	0.7
\$30,001 - \$35,000	20	2.3
\$35,001 - \$40,000	35	4.0
\$40,001 - \$45,000	22	2.5
\$45,001 - \$50,000	26	3.0
\$50,001 - \$55,000	27	3.1
\$55,001 - \$60,000	15	1.7
\$60,001 - \$65,000	15	1.7
\$65,001 - \$70,000	9	1.0
\$70,001 - \$75,000	20	2.3
\$75,001 - \$80,000	24	2.7
\$80,001 - \$85,000	43	5.0
\$85,001 - \$90,000	39	4.5
Over \$90,000	22	2.5
Don't Know	63	7.3
Not Reported	150	17.4
Not Applicable	324	37.6

Student Law Clerk Salary

	Responses	Percent
\$1,000 or Less	28	3.2
\$1,001 - \$1,500	35	4.0
\$1,501 - \$2,000	42	4.8
\$2,001 - \$2,500	19	2.2
\$2,501 - \$3,000	16	1.8
\$3,001 - \$3,500	14	1.6
\$3,501 - \$4,000	14	1.6
\$4,001 - \$4,500	16	1.8
\$4,501 - \$5,000	15	1.7
\$5,001 - \$5,500	17	1.9
\$5,501 - \$6,000	33	3.8
Over \$6,000	7	0.8
Not Reported	243	28.2
Not Applicable	361	41.9

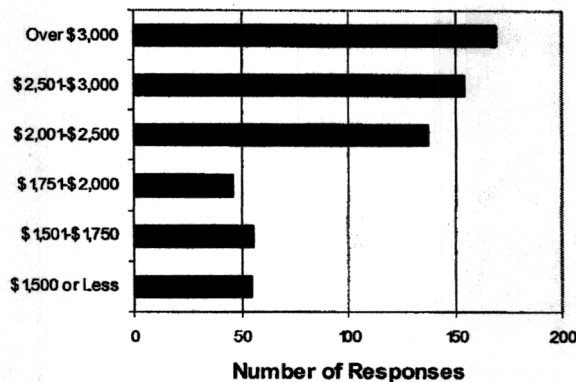
Salary of Newly Admitted Lawyer



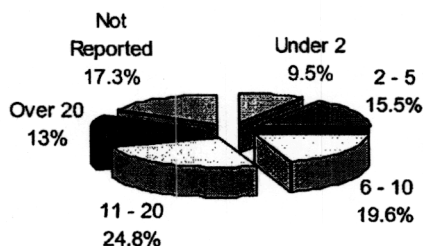
Legal Secretary Salary

	Responses	Percent
\$1,500 or Less	55	6.4
\$1,501 - \$1,750	56	6.5
\$1,751 - \$2,000	46	5.3
\$2,001 - \$2,500	137	15.9
\$2,501 - \$3,000	155	18.0
Over \$3,000	170	19.7
Not Reported	127	14.7
Not Applicable	114	13.2

Legal Secretary Salary



Secretarial Experience by Years



Secretarial Experience by Years

	Responses	Percent
Under 2	82	9.5
2 - 5	134	15.5
6 - 10	169	19.6
11 - 20	214	24.8
Over 20	112	13.0
Not Reported	149	17.3

Lawyers in Private Practice

Salaries, Fees, Overhead and Related

Legal Assistants/Paralegals Monthly Salary		
	Responses	Percent
\$1,500 or Less	15	1.7
\$1,501 - \$1,750	17	1.9
\$1,751 - \$2,000	25	2.9
\$2,001 - \$2,500	42	4.8
\$2,501 - \$3,000	74	8.6
\$3,001 - \$3,500	72	8.3
\$3,501 - \$4,000	56	6.5
\$4,001 - \$4,500	36	4.1
\$4,501 - \$5,000	15	1.7
Over \$5,000	6	0.7
Not Reported	130	15.1
Not Applicable	372	43.2

Legal Assistants/Paralegals Hourly Charge		
	Responses	Percent
\$20 or Less	3	0.3
\$21 - \$30	12	1.4
\$31 - \$40	29	3.3
\$41 - \$50	59	6.8
\$51 - \$60	90	10.4
Over \$60	264	30.7
Not Reported	77	8.9
Not Applicable	326	37.9

Monthly Salary of Legal Assistants/Paralegals by Selected Location

	Boone County		Cole County		Greene County		Jackson County		St. Louis County		St. Louis City		Other Areas		Not Reported		All Respondents	
	No.	%	No.	%	No.	%	No.	%	No.	%	No.	%	No.	%	No.	%	No.	%
\$1,500 or Less	2	0.6%	1	0.3%	1	0.3%	5	1.4%	1	0.3%	3	0.8%	1	0.3%	1	0.3%	15	4.2%
\$1,501-\$1,750	1	0.3%	.	.	3	0.8%	4	1.1%	3	0.8%	1	0.3%	3	0.8%	2	0.6%	17	4.7%
\$1,751-\$2,000	1	0.3%	.	.	4	1.1%	8	2.2%	2	0.6%	3	0.8%	6	1.7%	1	0.3%	25	7.0%
\$2,001-\$2,500	.	.	1	0.3%	6	1.7%	10	2.8%	8	2.2%	7	2.0%	8	2.2%	2	0.6%	42	11.7%
\$2,501-\$3,000	.	.	3	0.8%	19	5.3%	16	4.5%	12	3.4%	10	2.8%	13	3.6%	1	0.3%	74	20.7%
\$3,001-\$3,500	.	.	2	0.6%	4	1.1%	27	7.5%	17	4.7%	11	3.1%	6	1.7%	5	1.4%	72	20.1%
\$3,501-\$4,000	.	.	1	0.3%	2	0.6%	30	8.4%	9	2.5%	11	3.1%	2	0.6%	1	0.3%	56	15.6%
\$4,001-\$4,500	.	.	1	0.3%	1	0.3%	12	3.4%	7	2.0%	14	3.9%	1	0.3%	.	.	36	10.1%
\$4,501-\$5,000	1	0.3%	4	1.1%	7	2.0%	3	0.8%	15	4.2%
Over \$5,000	4	1.1%	1	0.3%	1	0.3%	6	1.7%
All Respondents	5	1.4%	9	2.5%	40	11.2%	120	33.5%	67	18.7%	64	17.9%	40	11.2%	13	3.6%	358	100.0%

Monthly Salary of Legal Assistants/Paralegals by Size of Firm

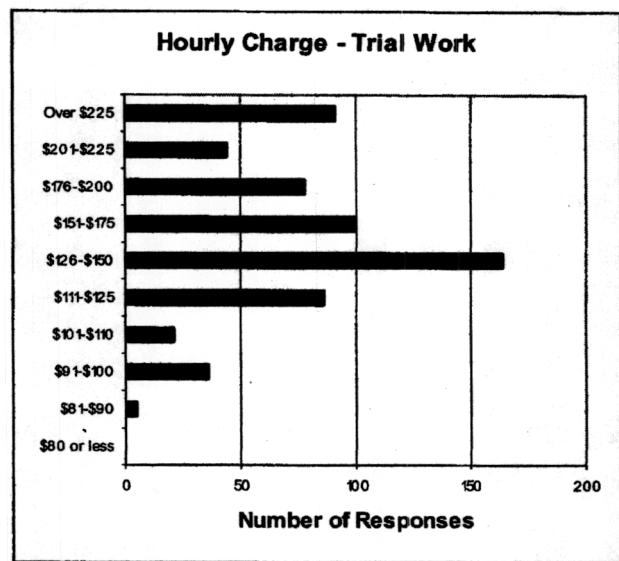
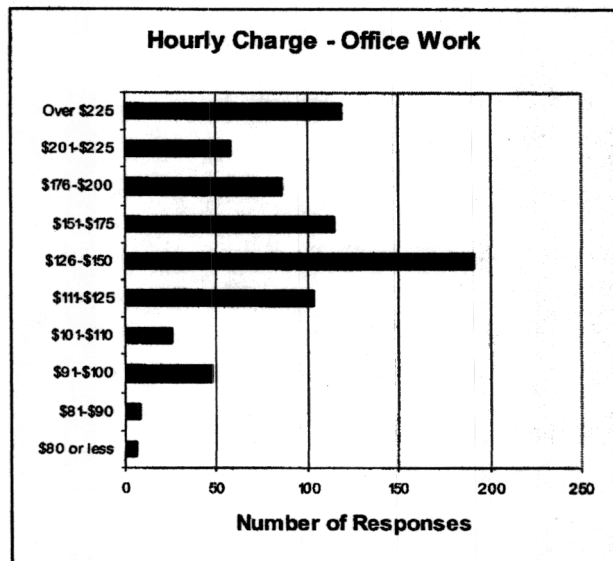
	1		2 - 4		5 - 9		10 - 19		20 - 29		30 - 99		100 & Over		All Resp.	
	No.	%	No.	%	No.	%	No.	%	No.	%	No.	%	No.	%	No.	%
\$1,500 or Less	8	2.2%	6	1.7%	.	.	1	0.3%	15	4.2%
\$1,501-\$1,750	6	1.7%	6	1.7%	1	0.3%	2	0.6%	1	0.3%	.	.	1	0.3%	17	4.7%
\$1,751-\$2,000	4	1.1%	15	4.2%	4	1.1%	1	0.3%	1	0.3%	25	7.0%
\$2,001-\$2,500	10	2.8%	15	4.2%	8	2.2%	4	1.1%	1	0.3%	1	0.3%	3	0.8%	42	11.7%
\$2,501-\$3,000	7	2.0%	13	3.6%	21	5.9%	20	5.6%	3	0.8%	3	0.8%	7	2.0%	74	20.7%
\$3,001-\$3,500	3	0.8%	8	2.2%	11	3.1%	20	5.6%	10	2.8%	7	2.0%	13	3.6%	72	20.1%
\$3,501-\$4,000	1	0.3%	4	1.1%	3	0.8%	7	2.0%	6	1.7%	9	2.5%	26	7.3%	56	15.6%
\$4,001-\$4,500	.	.	1	0.3%	.	.	7	2.0%	1	0.3%	5	1.4%	22	6.1%	36	10.1%
\$4,501-\$5,000	2	0.6%	.	.	2	0.6%	1	0.3%	2	0.6%	4	1.1%	4	1.1%	15	4.2%
Over \$5,000	1	0.3%	5	1.4%	6	1.7%
All Respondents	42	11.7%	68	19.0%	50	14.0%	63	17.6%	25	7.0%	29	8.1%	81	22.6%	358	100.0%

Lawyers in Private Practice

Salaries, Fees, Overhead and Related

Hourly Charge - Office Work		
	Responses	Percent
Not Hourly Basis	67	7.7
\$80 or Less	6	0.7
\$81-\$ 90	8	0.9
\$91-\$100	48	5.5
\$101-\$110	26	3.0
\$111-\$125	103	11.9
\$126-\$150	191	22.2
\$151-\$175	115	13.3
\$176-\$200	86	10.0
\$201-\$225	58	6.7
Over \$225	119	13.8
Not Reported	33	3.8

Hourly Charge - Trial Work		
	Responses	Percent
Not Hourly Basis	62	7.2
\$80 or Less	1	0.1
\$81-\$ 90	5	0.5
\$91-\$100	36	4.1
\$101-\$110	21	2.4
\$111-\$125	86	10.0
\$126-\$150	164	19.0
\$151-\$175	100	11.6
\$176-\$200	78	9.0
\$201-\$225	44	5.1
Over \$225	91	10.5
Not Reported	172	20.0

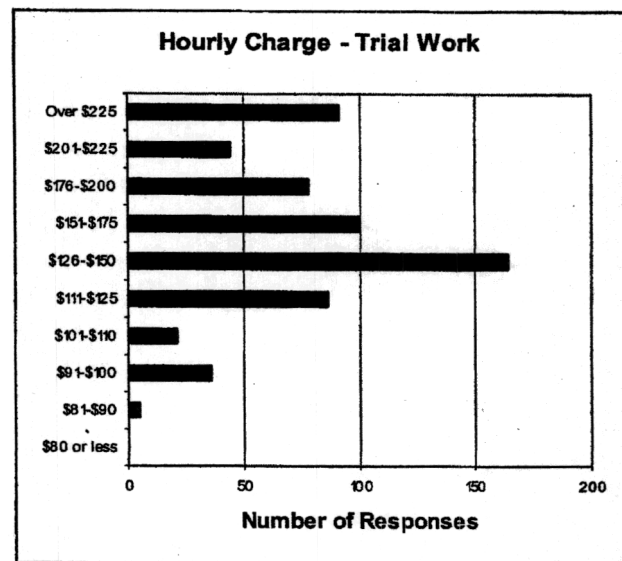
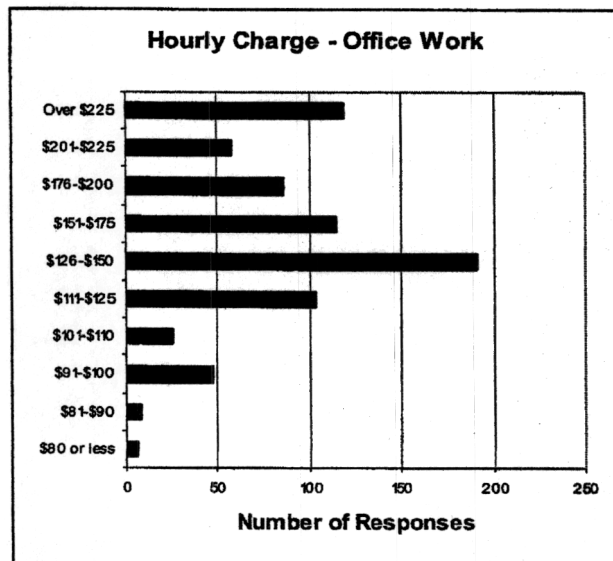


Lawyers in Private Practice

Salaries, Fees, Overhead and Related

Hourly Charge - Office Work		
	Responses	Percent
Not Hourly Basis	67	7.7
\$80 or Less	6	0.7
\$81-\$ 90	8	0.9
\$91-\$100	48	5.5
\$101-\$110	26	3.0
\$111-\$125	103	11.9
\$126-\$150	191	22.2
\$151-\$175	115	13.3
\$176-\$200	86	10.0
\$201-\$225	58	6.7
Over \$225	119	13.8
Not Reported	33	3.8

Hourly Charge - Trial Work		
	Responses	Percent
Not Hourly Basis	62	7.2
\$80 or Less	1	0.1
\$81-\$ 90	5	0.5
\$91-\$100	36	4.1
\$101-\$110	21	2.4
\$111-\$125	86	10.0
\$126-\$150	164	19.0
\$151-\$175	100	11.6
\$176-\$200	78	9.0
\$201-\$225	44	5.1
Over \$225	91	10.5
Not Reported	172	20.0



Lawyers in Private Practice

Salaries, Fees, Overhead and Related

Hourly Charge for Office Work by County of Practice (Grouped)

	Boone County		Cole County		Greene County		Jackson County		St. Louis County		St. Louis City		Other Areas		Not Reported		All Respondents	
	No.	%	No.	%	No.	%	No.	%	No.	%	No.	%	No.	%	No.	%	No.	%
\$80 or Less	2	0.3%	1	0.1%	2	0.3%	.	.	1	0.1%	.	.	6	0.8%
\$81-\$90	2	0.3%	2	0.3%	1	0.1%	2	0.3%	1	0.1%	8	1.1%
\$91-\$100	2	0.3%	1	0.1%	3	0.4%	5	0.7%	13	1.7%	3	0.4%	18	2.4%	3	0.4%	48	6.3%
\$101-\$110	2	0.3%	1	0.1%	2	0.3%	3	0.4%	3	0.4%	4	0.5%	11	1.4%	.	.	26	3.4%
\$111-\$125	6	0.8%	3	0.4%	12	1.6%	18	2.4%	14	1.8%	15	2.0%	30	3.9%	5	0.7%	103	13.6%
\$126-\$150	8	1.1%	8	1.1%	16	2.1%	45	5.9%	33	4.3%	30	3.9%	44	5.8%	7	0.9%	191	25.1%
\$151-\$175	4	0.5%	4	0.5%	10	1.3%	28	3.7%	29	3.8%	21	2.8%	14	1.8%	5	0.7%	115	15.1%
\$176-\$200	.	.	2	0.3%	6	0.8%	31	4.1%	23	3.0%	9	1.2%	13	1.7%	2	0.3%	86	11.3%
\$201-\$225	1	0.1%	1	0.1%	1	0.1%	27	3.6%	16	2.1%	6	0.8%	4	0.5%	2	0.3%	58	7.6%
Over \$225	.	.	2	0.3%	1	0.1%	53	7.0%	31	4.1%	28	3.7%	2	0.3%	2	0.3%	119	15.7%
All Resp.	25	3.3%	22	2.9%	51	6.7%	213	28.0%	166	21.8%	117	15.4%	139	18.3%	27	3.6%	760	100.0%

Hourly Charge for Trial Work by County of Practice (Grouped)

	Boone County		Cole County		Greene County		Jackson County		St. Louis County		St. Louis City		Other Areas		Not Reported		All Respondents	
	No.	%	No.	%	No.	%	No.	%	No.	%	No.	%	No.	%	No.	%	No.	%
\$80 or Less	1	0.2%	.	.	1	0.2%
\$81-\$90	1	0.2%	1	0.2%	2	0.3%	1	0.2%	5	0.8%
\$91-\$100	2	0.3%	1	0.2%	3	0.5%	4	0.6%	9	1.4%	3	0.5%	12	1.9%	2	0.3%	36	5.8%
\$101-\$110	1	0.2%	1	0.2%	2	0.3%	3	0.5%	2	0.3%	4	0.6%	8	1.3%	.	.	21	3.4%
\$111-\$125	3	0.5%	3	0.5%	8	1.3%	14	2.2%	15	2.4%	8	1.3%	29	4.6%	6	1.0%	86	13.7%
\$126-\$150	7	1.1%	7	1.1%	18	2.9%	34	5.4%	23	3.7%	29	4.6%	43	6.9%	3	0.5%	164	26.2%
\$151-\$175	6	1.0%	4	0.6%	8	1.3%	25	4.0%	26	4.2%	12	1.9%	13	2.1%	6	1.0%	100	16.0%
\$176-\$200	.	.	2	0.3%	4	0.6%	25	4.0%	18	2.9%	9	1.4%	16	2.6%	4	0.6%	78	12.5%
\$201-\$225	1	0.2%	.	.	1	0.2%	16	2.6%	14	2.2%	6	1.0%	3	0.5%	3	0.5%	44	7.0%
Over \$225	1	0.2%	3	0.5%	.	.	44	7.0%	24	3.8%	15	2.4%	2	0.3%	2	0.3%	91	14.5%
All Resp.	21	3.4%	21	3.4%	44	7.0%	165	26.4%	132	21.1%	87	13.9%	129	20.6%	27	4.3%	626	100.0%

Lawyers in Private Practice

Salaries, Fees, Overhead and Related

Charge Interest on Past-Due Billings

	Responses	Percent
Yes	162	18.8
No	594	69.0
Not Reported	104	12.0

Overhead Percentage

	Responses	Percent
20% or Less	68	7.9
21-30%	86	10.0
31-40%	145	16.8
41-50%	181	21.0
Over 50%	100	11.6
Don't Know	253	29.4
Not Reported	27	3.1

Percent Billings Written

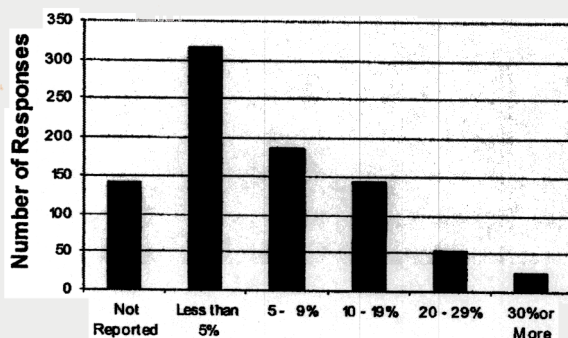
Off as a Loss

	Responses	Percent
Less than 5%	316	36.7
5- 9%	185	21.5
10-19%	143	16.6
20-29%	53	6.1
30% or More	23	2.6
Not Reported	140	16.2

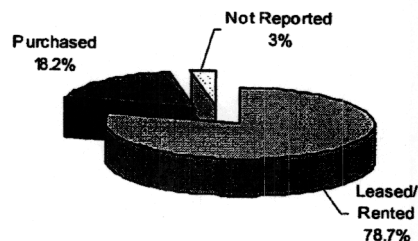
Office Space Rented/Purchased

	Responses	Percent
Leased/Rented	677	78.7
Purchased	157	18.2
Not Reported	26	3.0

Percent of Billings Written Off



Office Space Rented/Purchased



Credit Card Payment for Legal Fees

	Responses	Percent
Yes	189	23.9
No	487	61.6
Don't Know	114	14.4

Responses Missing = 70

Handle Undisputed Past Due Billings

	Responses	Percent
Lawsuit	60	6.9
Write Off	411	47.7
Collection Agency	49	5.7
Other	198	23.0
Lawsuit/Write Off	2	0.2
Write Off/Other	3	0.3
Write Off/Agency	0	0.0
Agency/Other	0	0.0
Lawsuit/Other	0	0.0
Not Reported	135	15.9

Lawyers in Private Practice

Law Practice Areas by Selected Demographic Factors

Law Practice Areas by Hourly Charge - Office Work

	\$90 or Less		\$91-\$100		\$101-\$110		\$111-\$125		\$126-\$150		\$151-\$175		\$176-\$200		\$201-\$225		Over \$225		All Resp. ¹	
	No.	%	No.	%	No.	%	No.	%	No.	%	No.	%	No.	%	No.	%	No.	%	No.	%
Family Law	6	5.1%	8	6.8%	4	3.4%	20	17.1%	36	30.8%	14	12.0%	14	12.0%	7	6.0%	8	6.8%	117	100.0%
Civil Trial	3	1.2%	13	5.0%	8	3.1%	46	17.8%	68	26.3%	36	13.9%	37	14.3%	16	6.2%	32	12.4%	259	100.0%
Estate Planning	.	.	4	4.4%	.	.	5	5.5%	35	38.5%	15	16.5%	5	5.5%	10	11.0%	17	18.7%	91	100.0%
Criminal	4	6.6%	8	13.1%	4	6.6%	11	18.0%	22	36.1%	4	6.6%	2	3.3%	4	6.6%	2	3.3%	61	100.0%
Bankruptcy	.	.	3	5.8%	2	3.8%	8	15.4%	12	23.1%	10	19.2%	6	11.5%	3	5.8%	8	15.4%	52	100.0%
Business	.	.	3	2.9%	.	.	6	5.7%	19	18.1%	16	15.2%	15	14.3%	14	13.3%	32	30.5%	105	100.0%
Tax	.	.	2	5.7%	.	.	3	8.6%	5	14.3%	7	20.0%	6	17.1%	4	11.4%	8	22.9%	35	100.0%
Real Estate	.	.	2	3.0%	.	.	5	7.6%	15	22.7%	9	13.6%	8	12.1%	10	15.2%	17	25.8%	66	100.0%
Labor	1	2.8%	3	8.3%	11	30.6%	8	22.2%	5	13.9%	5	13.9%	3	8.3%	36	100.0%
Workers' Comp.	2	5.0%	4	10.0%	5	12.5%	9	22.5%	12	30.0%	3	7.5%	3	7.5%	1	2.5%	1	2.5%	40	100.0%
Patent, Trademark, Copyright	1	6.7%	1	6.7%	2	13.3%	2	13.3%	2	13.3%	1	6.7%	6	40.0%	15	100.0%
Health	1	5.9%	.	.	5	29.4%	6	35.3%	.	.	1	5.9%	4	23.5%	17	100.0%
Environ- ment	1	8.3%	1	8.3%	2	16.7%	2	16.7%	6	50.0%	12	100.0%
Elder Law/ Soc. Sec.	1	33.3%	1	33.3%	1	33.3%	3	100.0%
Alternative Dispute Resolution	3	37.5%	2	25.0%	1	12.5%	1	12.5%	1	12.5%	8	100.0%
Insurance Practice	1	2.3%	7	16.3%	2	4.7%	11	25.6%	11	25.6%	4	9.3%	2	4.7%	1	2.3%	4	9.3%	43	100.0%
Admin./ Reg. Law	.	.	1	5.3%	.	.	1	5.3%	2	10.5%	5	26.3%	3	15.8%	3	15.8%	4	21.1%	19	100.0%
Other	1	1.9%	2	3.8%	1	1.9%	7	13.5%	8	15.4%	13	25.0%	8	15.4%	3	5.8%	9	17.3%	52	100.0%
All Resp. ²	12	1.8%	39	5.7%	21	3.1%	90	13.3%	168	24.7%	104	15.3%	78	11.5%	55	8.1%	112	16.5%	679	100.0%

Respondents may have answered in more than one law practice area.

¹This number is the total number of respondents within a specific category (ex. Family Law).

²This number is the total number of respondents within a specific range (ex. \$126-\$150).

Lawyers in Private Practice

Law Practice Areas by Selected Demographic Factors

Law Practice Areas by Hourly Charge - Trial Work

	\$90 or Less		\$91-\$100		\$101-\$110		\$111-\$125		\$126-\$150		\$151-\$175		\$176-\$200		\$201-\$225		Over \$225		All Resp. ¹	
	No.	%	No.	%	No.	%	No.	%	No.	%	No.	%	No.	%	No.	%	No.	%	No.	%
Family Law	3	2.6%	9	7.9%	4	3.5%	18	15.8%	34	29.8%	15	13.2%	15	13.2%	8	7.0%	8	7.0%	114	100.0%
Civil Trial	.	.	9	3.6%	8	3.2%	40	16.1%	61	24.6%	40	16.1%	39	15.7%	17	6.9%	34	13.7%	248	100.0%
Estate Planning	.	.	1	2.1%	.	.	3	6.3%	19	39.6%	9	18.8%	4	8.3%	3	6.3%	9	18.8%	48	100.0%
Criminal	2	3.3%	9	15.0%	4	6.7%	9	15.0%	19	31.7%	7	11.7%	3	5.0%	2	3.3%	5	8.3%	60	100.0%
Bankruptcy	2	4.3%	9	19.1%	11	23.4%	6	12.8%	7	14.9%	2	4.3%	10	21.3%	47	100.0%
Business	.	.	3	6.4%	.	.	5	10.6%	11	23.4%	6	12.8%	4	8.5%	5	10.6%	13	27.7%	47	100.0%
Tax	.	.	2	12.5%	1	6.3%	4	25.0%	4	25.0%	1	6.3%	4	25.0%	16	100.0%
Real Estate	.	.	1	3.0%	.	.	2	6.1%	10	30.3%	3	9.1%	4	12.1%	7	21.2%	6	18.2%	33	100.0%
Labor	1	2.9%	12	34.3%	8	22.9%	6	17.1%	4	11.4%	4	11.4%	35	100.0%
Workers' Comp.	2	5.3%	3	7.9%	5	13.2%	7	18.4%	9	23.7%	7	18.4%	3	7.9%	1	2.6%	1	2.6%	38	100.0%
Patent, Trademark Copyright	1	7.1%	1	7.1%	2	14.3%	1	7.1%	2	14.3%	1	7.1%	6	42.9%	14	100.0%
Health	1	9.1%	.	.	4	36.4%	3	27.3%	.	.	1	9.1%	2	18.2%	11	100.0%
Environ-ment	1	8.3%	1	8.3%	1	8.3%	2	16.7%	1	8.3%	6	50.0%	12	100.0%
Elder Law/ Soc. Sec.	1	50.0%	1	50.0%	2	100.0%
Alternative Dispute Resolution	3	37.5%	2	25.0%	1	12.5%	1	12.5%	1	12.5%	8	100.0%
Insurance Practice	.	.	6	14.3%	3	7.1%	10	23.8%	10	23.8%	6	14.3%	1	2.4%	2	4.8%	4	9.5%	42	100.0%
Admin./ Reg. Law	1	6.7%	1	6.7%	5	33.3%	3	20.0%	.	.	5	33.3%	15	100.0%
Other	.	.	2	4.7%	.	.	6	14.0%	8	18.6%	13	30.2%	3	7.0%	5	11.6%	6	14.0%	43	100.0%
All Resp. ²	6	1.1%	29	5.3%	19	3.4%	75	13.6%	140	25.4%	88	15.9%	70	12.7%	41	7.4%	84	15.2%	552	100.0%

Respondents may have answered in more than one law practice area.

¹This number is the total number of respondents within a specific category (ex. Family Law).

²This number is the total number of respondents within a specific range (ex. \$126-\$150).