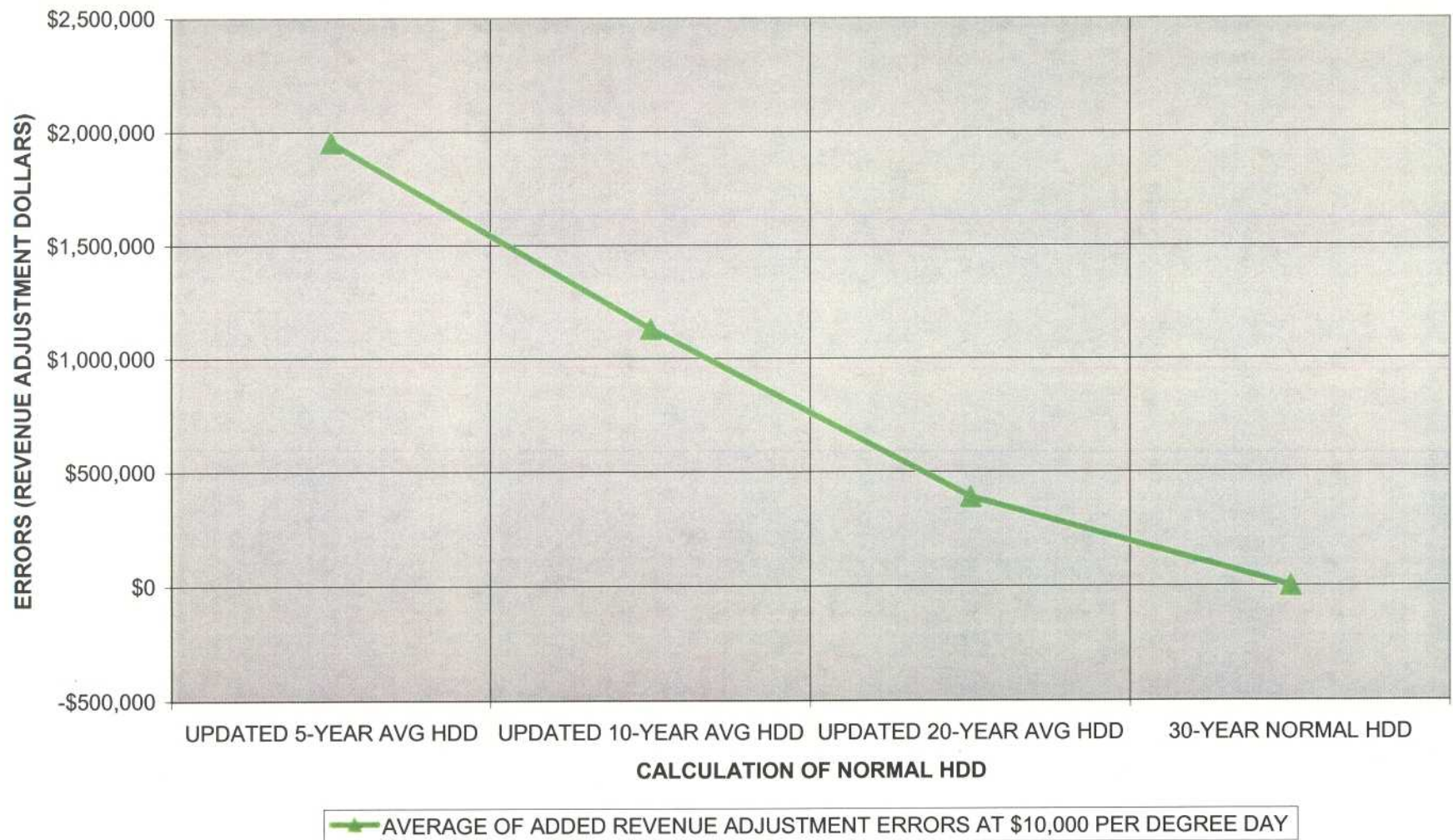


KANSAS CITY INTERNATIONAL AIRPORT
 AVERAGE INCREASE IN REVENUE ADJUSTMENT ERRORS BY CHANGING TO 5-, 10- AND 20-YEAR MOVING
 AVERAGES
 AT \$10,000 PER DEGREE DAY



Kansas City International Airport
Increase in Rate Adjustment From Changing The Calculation Of Normal HDD
For 2003 (Observed) And 2004(Projected Normal)

