

Missouri's Advantages for Wind Energy

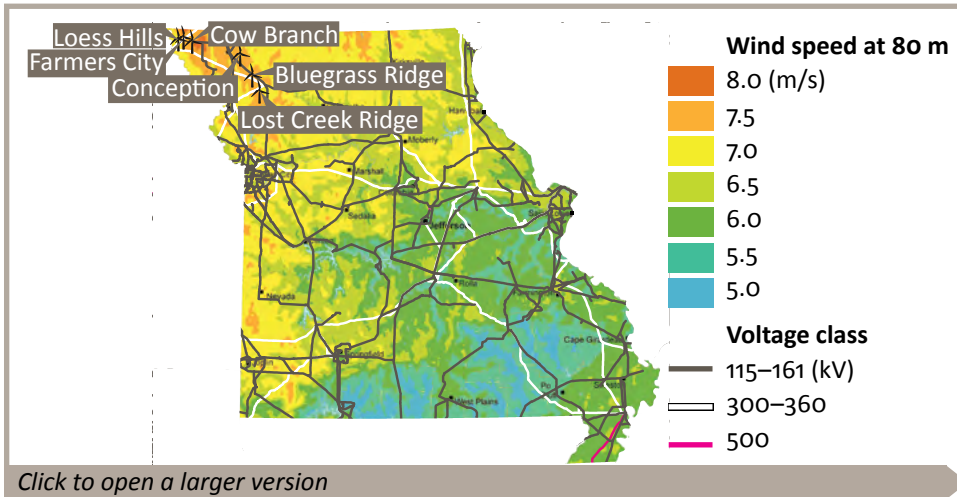


Currents. It's how we describe the flow of air moving around us...and the flow of electricity powering our homes and businesses. In Missouri, we're working to blur the line between the two by making our wind resources a big part of our energy picture.

Located on the eastern edge of the U.S. wind corridor, Missouri contributes to the Midwest's significant wind resources. An advanced supply chain, a highly-ranked transportation network, and a business-friendly environment further the state's ability to compete for wind energy projects.

With each new turbine that's built, with each new component that rolls off the line, Missouri is putting into motion that which is already stirring in the air.

Missouri's wind farms



Name	Location	Power Capacity (MW)	Units	Turbine Mfr.	Developer & Owner	Power Purchaser	Year Online
Lost Creek Ridge Wind Farm (2011)	DeKalb	1.5	1	GE Energy	Wind Capital Group	Associated Electric Cooperative Inc. (AECI)	2011
Lost Creek Ridge Wind Farm (2010)	DeKalb	148.5	99	GE Energy	Wind Capital Group	Associated Electric Cooperative Inc. (AECI)	2010
Farmers City	Atchison County	146.0	73	Gamesa	Iberdrola Renewables		2009
Conception Wind Project	Nodaway County	50.4	24	Suzlon	Wind Capital Group	Associated Electric Cooperative	2008
Cow Branch Wind Energy Center	Atchison County	50.4	24	Suzlon	Wind Capital Group	Associated Electric Cooperative	2008
Loess Hills Wind Energy Center	Rock Port	5.0	4	Suzlon	Wind Capital Group	Missouri Joint Municipal Electric Utility Commission	2008
Bluegrass Ridge Wind Energy Project	Gentry county	56.7	27	Suzlon	Wind Capital Group	Associated Electric Cooperative	2007