

Helping the Utility Understand the Consumer

Helping the Consumer Understand Energy

Painting a Portrait of Energy

June 2010

Create Your Intelligent Infrastructure™



Consumer Knowledge Starts with a Smart Grid Vision



Aclara Vision... for the 2010's

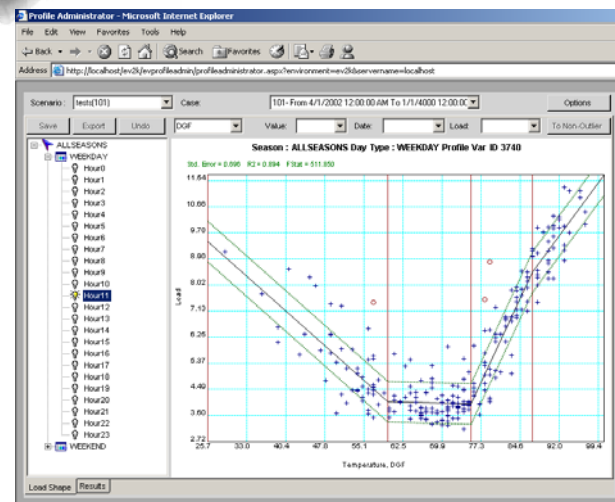
Engaged Customers

Connecting the consumer to beneficial utility programs and services through a variety of communication channels



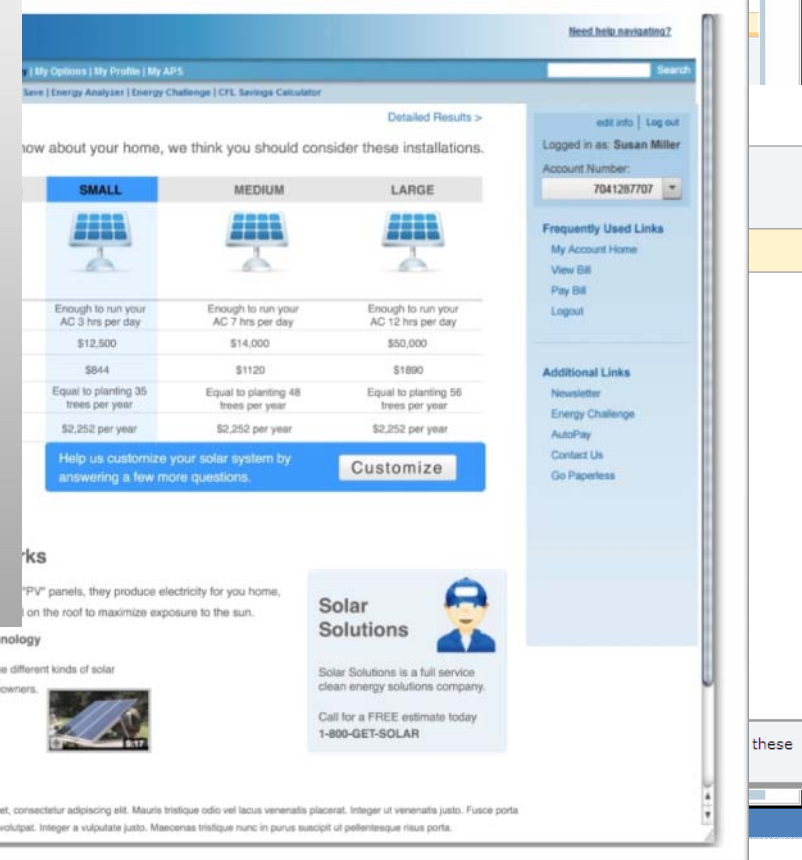
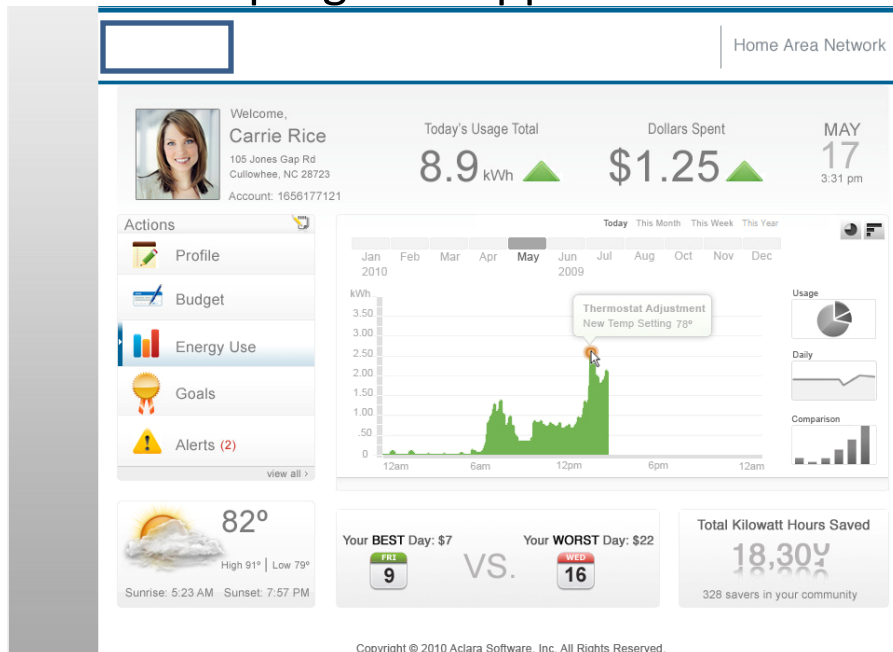
Smart Utilities

Leveraging the best available data through advanced analytics and home biometrics



Aclara Energy Portrait Vision

- Helping the Customer to understand Energy Usage
- Helping the Customer enable the Smart Home with Solar program support



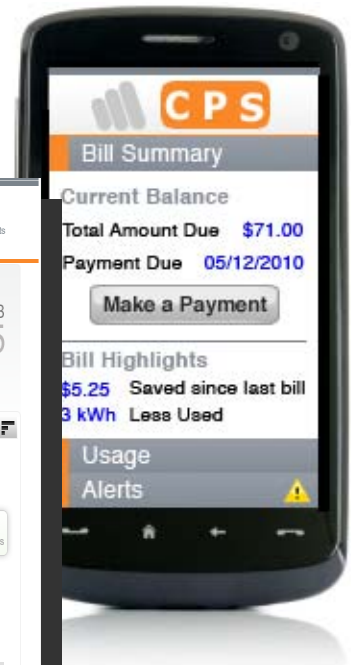
HAN Web Portal

- The HAN web portal will be an essential tool for delivering AMI benefits directly to your customers. Customers will be able to monitor gas use, control their thermostat, and manage their gas budget
- **Monitor Electric / Gas / Water usage**
 - Whole house
 - Furnace
 - Water heater
 - Clothes dryer
- **Thermostat Control (Zigbee/WiFi)**
 - Monitor Set point
 - Monitor actual temperature in house
 - Monitor Outdoor temp.
 - Adjust set point
- **Manage the Utility Budget**
 - (use per day, week, month, etc)
 - Set a utility budget
 - Monitor your budget
 - Budget alerts
- **Predictive and Comparative Information**
 - Home Biometrics help the consumer understand their homes energy efficiency



Aclara ENERGYprism

- USI Internet Services integrated to ENERGYprism
- Other 3rd Party devices integrated to ENERGYprism
 - Intwine Connect with WiFi
 - PCT
 - IHD
 - Electric Outlet Strip
 - AzTech Associates
 - IHD
 - And More ...



Interoperability Through Standards

- WiFi Leader in IEEE 802.11 standards development
Formed & Chair 802.11 sub 1 GHz study group
- Leader in the Wi-Fi Alliance (www.wifi.org)
SGTG guided the Wi-Fi Alliance to liaison agreement with Zigbee Alliance
SGTG Actively participating in SEP 2.0 messaging development
- Zigbee - Active in IEEE 802.15.4 standards development
–Lead development of 802.15.4g Class C Specifications
- Member of the Zigbee Alliance (www.zigbee.org)
–Active participant in Zigbee Smart Energy Profile Messaging



Wi-Fi today - An unrivaled success



- 10% of the world's population uses Wi-Fi
- About two billion cumulative shipments
- Double-digit growth year over year ... strong momentum continues
- Wi-Fi is now ubiquitous in home, enterprise, industry, education and government environments
- Consumers love Wi-Fi*
- More than 6,600 product certifications completed since March 2000
- 1460+ certifications in 2009 – a 42% increase over 2008
- Thirteen Wi-Fi Authorized Testing Laboratories worldwide
 - Most labs have been certifying Wi-Fi for > 5 years



ESCO / Aclara at a Glance

- ***ESCO Technologies***

- A St Louis based company traded under ESE on the NYSE

- ***The Aclara Subsidiaries***

- Have nearly 18 Million Electric / Gas / Water meters and DR Products deployed across the United States
- Has over 350 Utility Customers Globally
- Has 25 Customers in the State of Missouri with nearly 500,000 meters deployed

