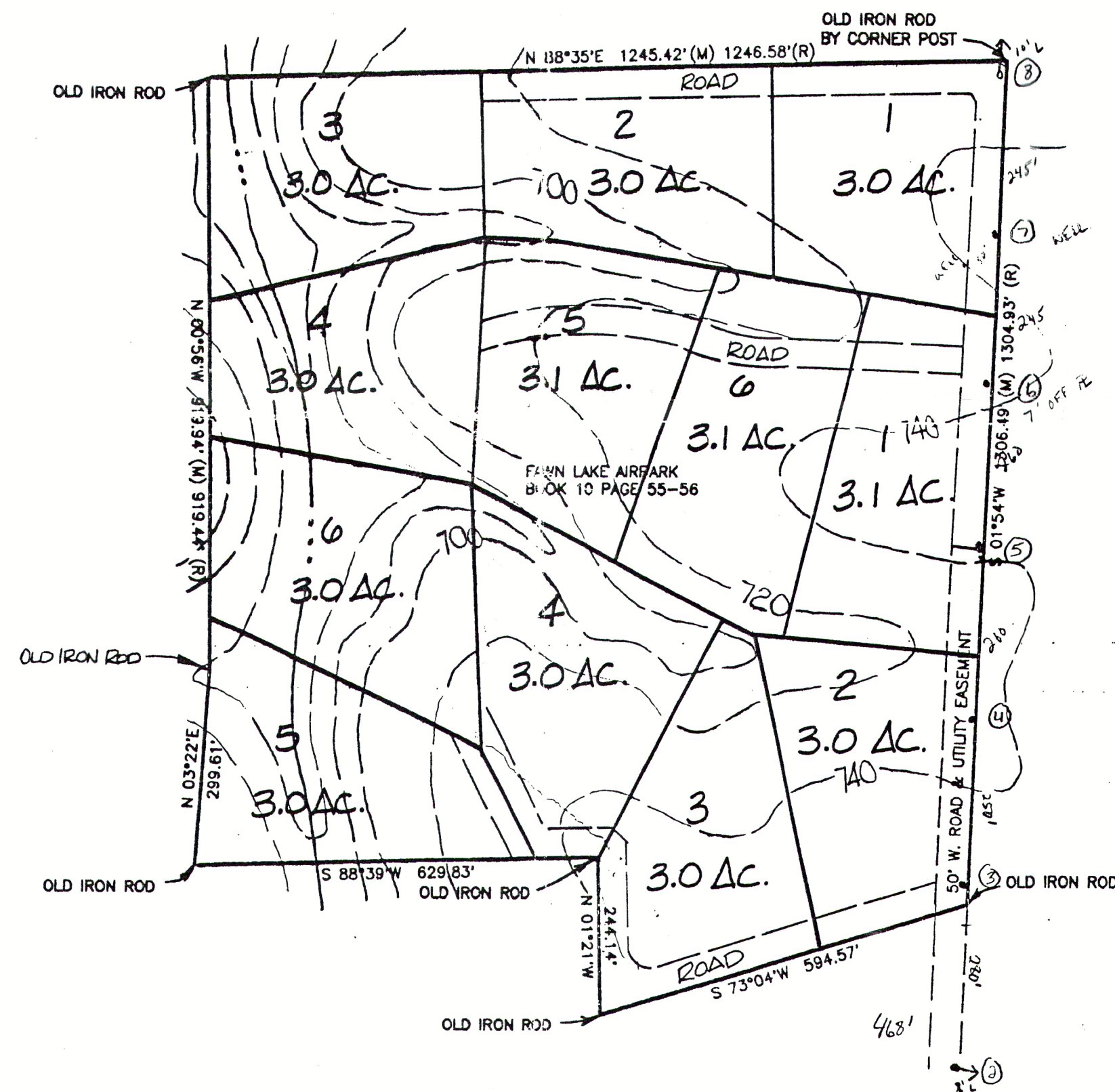


PRELIMINARY PLAT SECTION 36 TOWNSHIP 48 NORTH RANGE 2 WEST LINCOLN COUNTY, MO.



THIS IS TO CERTIFY THAT AT THE REQUEST OF
TOM WALLACE, WE HAVE MADE A
SURVEY AS SHOWN ABOVE AND THAT IT REPRESENTS A
TRUE AND ACCURATE RECORD OF SAID SURVEY AND
WAS EXECUTED IN ACCORDANCE WITH THE CURRENT
MINIMUM STANDARDS FOR PROPERTY BOUNDARY SURVEYS
OF THE MISSOURI STATE LAND SURVEY.
LARRY P. BADE
REGISTERED LAND SURVEYOR L.S. NO. 1434

FAWN LAKE EAST

RETRACEMENT SURVEY

Lewis-Bade, Inc.
Registered Land Surveyors
and Professional Engineers

PHONE (314) 456-2615 101 EAST WALTON WARRENTON, MO. 62783

SURVEYED BY	DATE	REVISIONS
JIM, NATHAN	SEPT. 2000	
DRAWN BY:	CHECKED BY:	SCALE
LARRY	VICKI	1"=200'

Figure 5G

PS2-10A SLIDE 10

EO-2002-1091