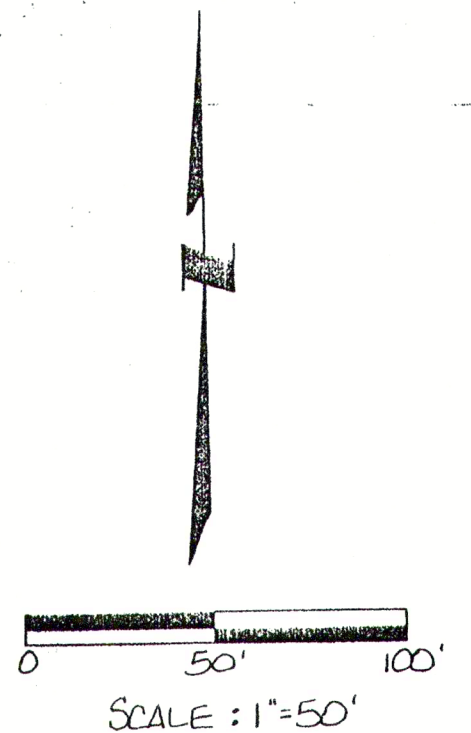
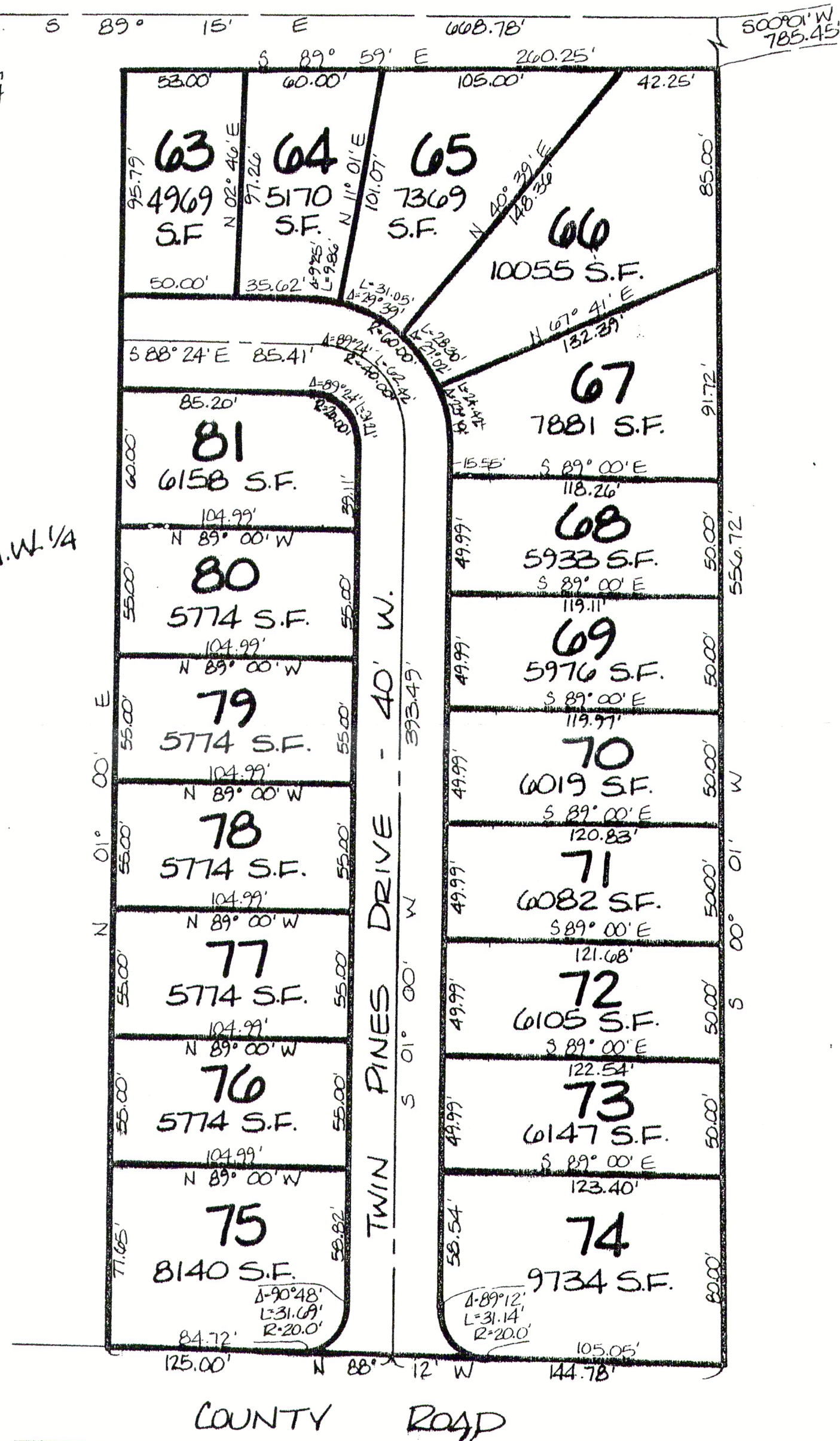



Pine Forest- Plat Three

SECTION 16,
TOWNSHIP 47 NORTH,
RANGE 1 WEST,
CITY OF WRIGHT CITY,
WARREN COUNTY, MO.

O.I. PIPE @
N.W. CORNER,
S.W. 1/4, N.W. 1/4

S.W. 1/4, N.W. 1/4



 Lewis-Bade, Inc. Registered Land Surveyors and Professional Engineers			
PHONE (314) 456-2615 • 101 EAST WALTON • WARRENTON MO 63383			
SURVEYED BY	DATE	REVISIONS	
	3/00		
DRAWN BY	CHECKED BY	SCALE	
VICKI	LARRY	1"=50'	