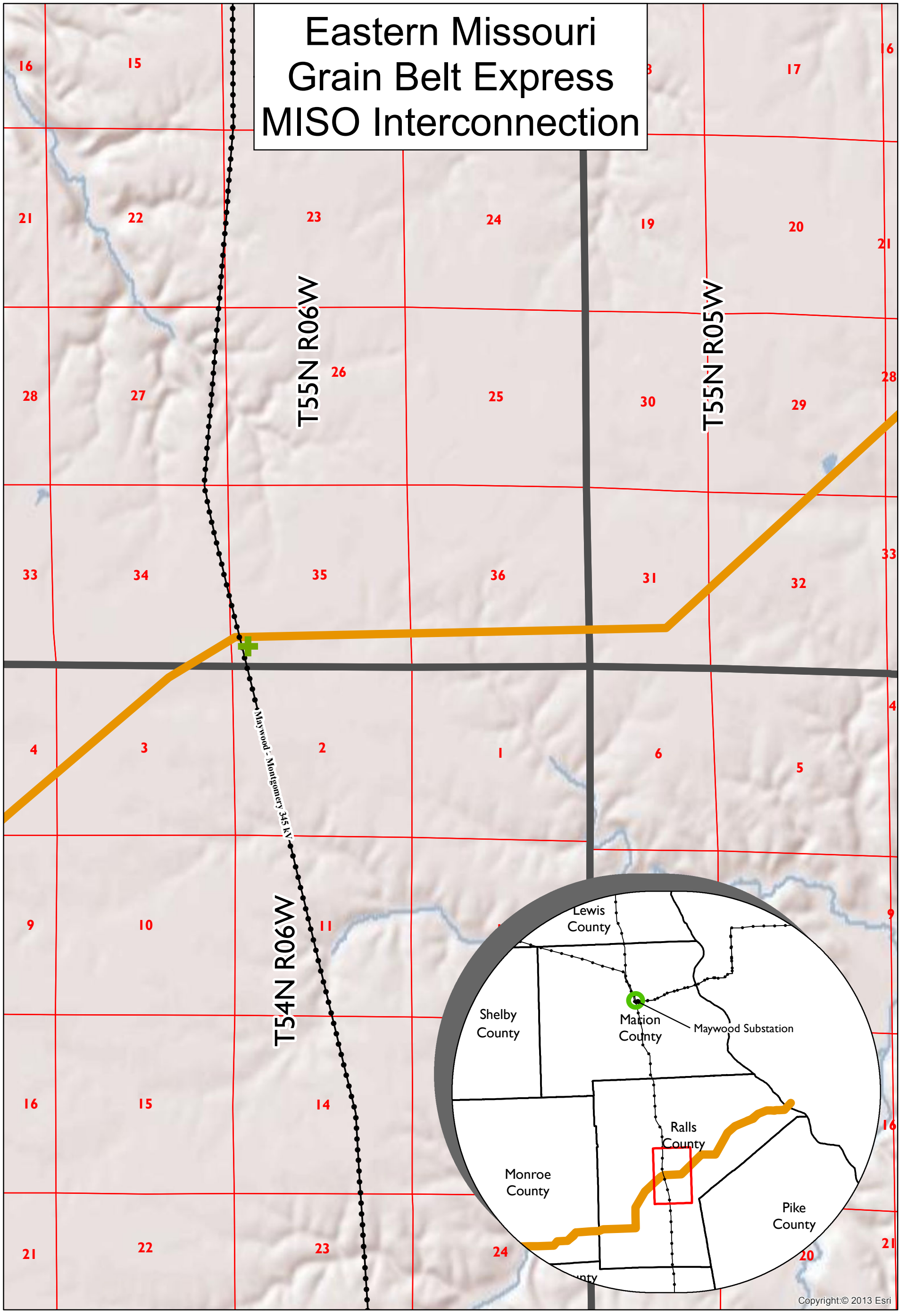


Eastern Missouri Grain Belt Express MISO Interconnection



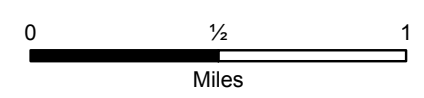
Legend

- Grain Belt Express Proposed Route
- Proposed DC/AC Converter Site
- Township Boundaries
- Maywood - Montgomery 345 kV
- PLSS Sections

GRAIN BELT EXPRESS
CLEAN LINE

Date: 3/10/2015

1:30,727



Copyright: © 2013 Esri

Proposed Converter Site
Regional Transmission Facilities
GRAIN BELT EXPRESS
CLEAN LINE

