

In re: Union Electric Company's Change to its 2011 Utility Resource Filing pursuant to 4 CSR 240 – Chapter 22.)) Case No. EO-2012-0127

WHEREFORE, Ameren Missouri asks the Commission to accept the attached information as a supplement to the filing provided on October 25, 2011, in this case.

Respectfully submitted,

UNION ELECTRIC COMPANY,
d/b/a Ameren Missouri

/s/ *Wendy K. Tatro*

Wendy K. Tatro, #60261
Associate General Counsel
Thomas M. Byrne, #33340
Managing Associate General Counsel
1901 Chouteau Avenue, MC-1310
P.O. Box 66149, MC-1310
St. Louis, MO 63166-6149
(314) 554-3484 (Telephone)
(314) 554-2514 (Telephone)
(314) 554-4014 (Facsimile)
AmerenMOService@ameren.com

Attorneys for Ameren Missouri

CERTIFICATE OF SERVICE

The undersigned hereby certifies that a true and correct copy of the foregoing Notice was served on the following parties via electronic mail (e-mail) on this 18th day of November, 2011.

Office of General Counsel
Missouri Public Service Commission
200 Madison Street, Suite 800
P.O. Box 360
Jefferson City, MO 65102
GenCounsel@psc.mo.gov
Nathan.Williams@psc.mo.gov

Diana Vuylsteke
Missouri Industrial Energy Consumers
211 N. Broadway, Suite 3600
St. Louis, MO 63102
dmvuylsteke@bryancave.com

Shannon Fisk
Natural Resources Defense Council
2 N. Riverside Plaza, Ste. 2250
Chicago, IL 60606
sfisk@nrdc.org

Glenda Cafer
Terri Pemberton
Grain Belt Express Clean Line, LLC
3321 SW 6th Ave
Topeka, KS 66606
gcafer@sbcglobal.net
tjpemberton@sbcglobal.net

Maxine Lipeles
Sierra Club
1 Brookings Dr - CB 1120
St. Louis, MO 63130-4899
milipele@wulaw.wustl.edu

Lisa Langeneckert
Missouri Energy Group
600 Washington Avenue, 15th Floor
St. Louis, MO 63101-1313
llangeneckert@sandberghoenix.com

Lewis Mills
Office of Public Counsel
200 Madison Street, Suite 650
P.O. Box 2230
Jefferson City, MO 65102
opcservice@ded.mo.gov
Lewis.Mills@ded.mo.gov

Kathleen Henry
Bruce Morrison
Henry Robertson
Natural Resources Defense Council
Mid-Missouri Peaceworks
Missouri Coalition for the Environment
Sierra Club
705 Olive Street, Suite 614
St. Louis, MO 63101
khenry@greatriverslaw.org
bamorrison@greatriverslaw.org
hrobertson@greatriverslaw.org

Kathryn Patton
Grain Belt Express Clean Line, LLC
1001 McKinney St., Ste. 700
Houston, TX 77002
kpatton@cleanlineenergy.com

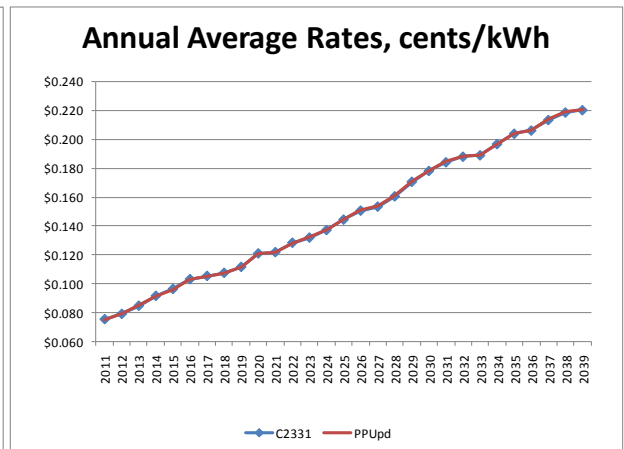
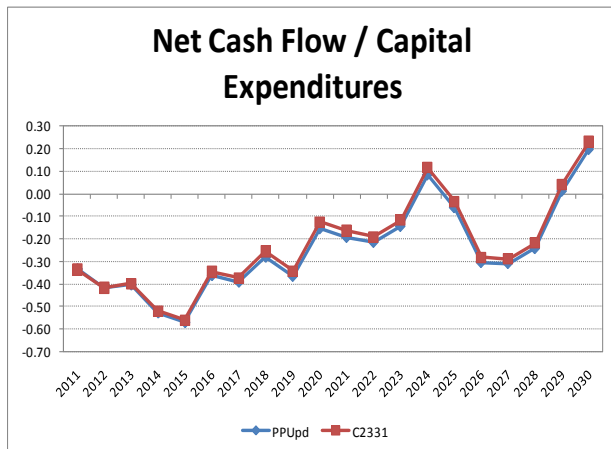
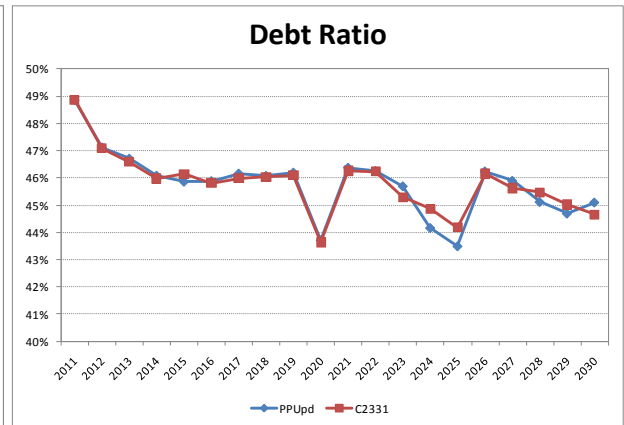
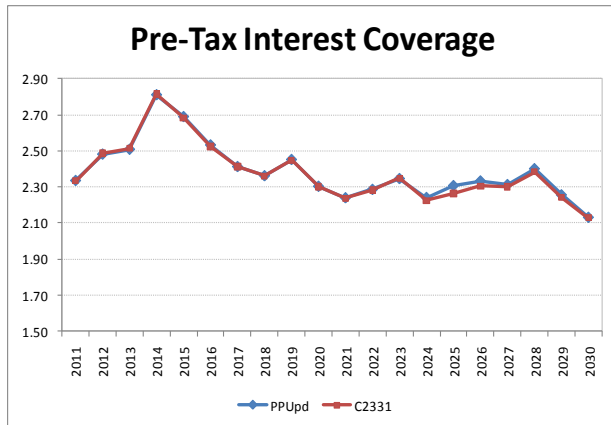
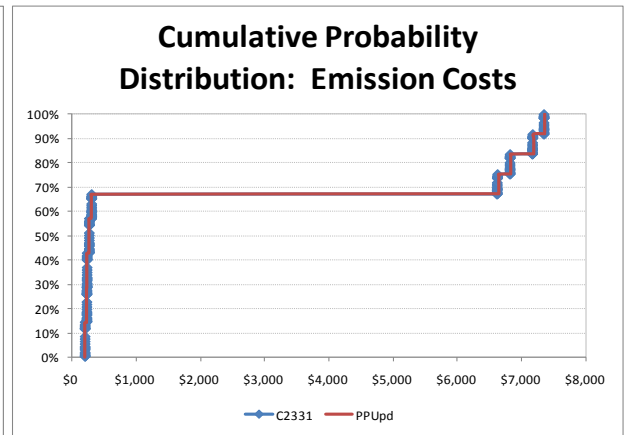
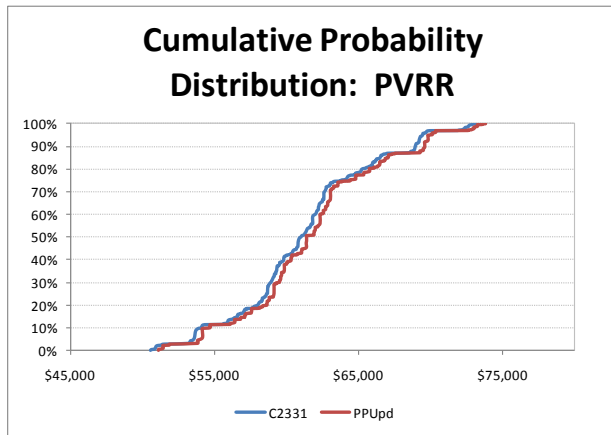
Jennifer Frazier
Missouri Department of Natural Resources
221 West High St.
P.O. Box 899
Jefferson City, MO 65102
jenny.frazier@ago.mo.gov

Douglas Healy
Missouri Joint Municipal Electric Utility
Commission
939 Boonville, Suite A
Springfield, MO 65802
doug@healylawoffices.com

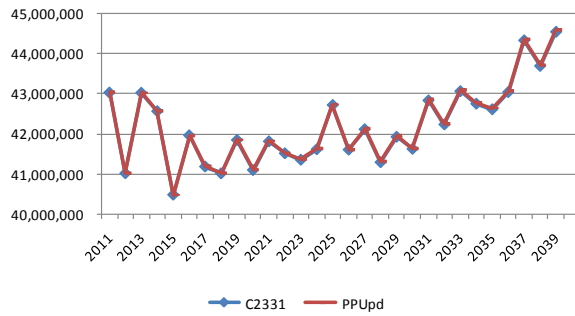
/s/ Wendy K. Tatro

Wendy K. Tatro

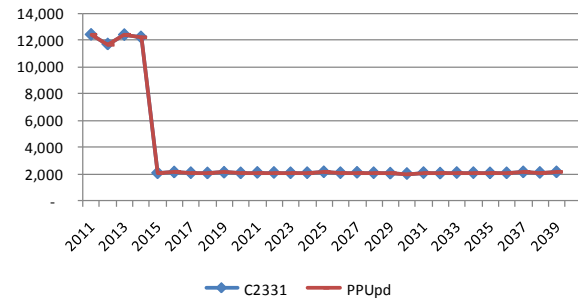
Results of Other Performance Measures
Updated Preferred Plan vs. Prior Preferred Plan



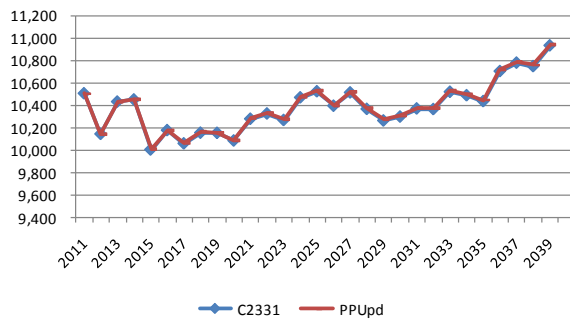
Probability-Weighted CO2 Emissions



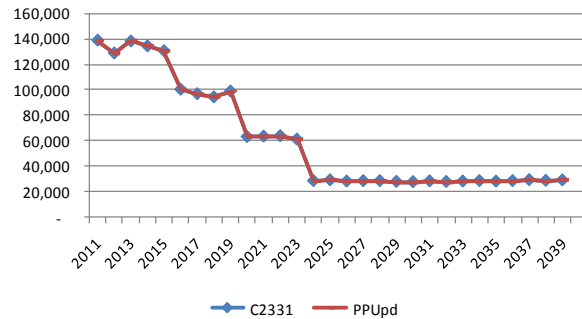
Probability-Weighted Mercury Emissions



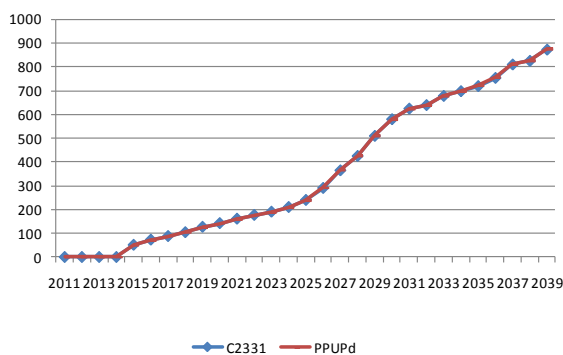
Probability-Weighted NOx Emissions



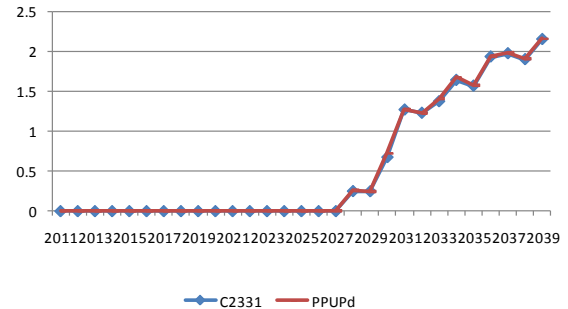
Probability-Weighted SO2 Emissions



Probability-Weighted CO2 Cost



Probability-Weighted NOx Cost



Probability-Weighted SO2 Cost

