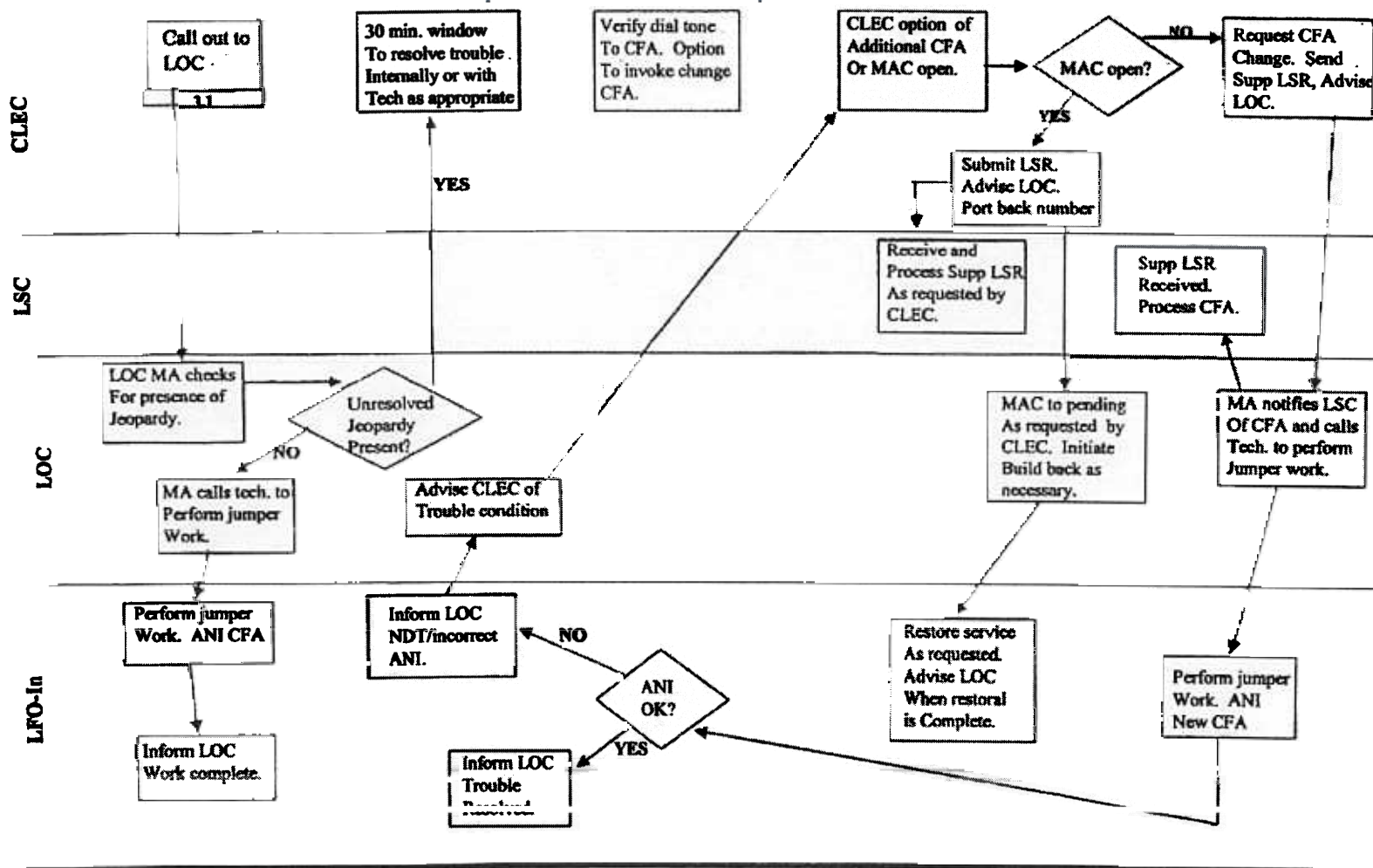




Existing Hot Cut Process (Pg.3)

Pre-Cut Jeopardy Notification Process - CHC





Current Options For Hot Cuts

Frame Due Time (FDT) Hot Cut

Ordering Specifics

•CLEC can request a time between 8am – 5pm for the UNE-P to LNP with Loop migrations using the DFDT field.

•The FDT FID with the specific appointment time is used on the service order to notify the provisioning groups of the time to perform the hot cut work.

Provisioning Specifics

Critical date management and validation of service order data is performed for all hot cut items.

Coordinated (CHC) Hot Cut

Ordering Specifics

Currently enhancements are being implemented to allow additional flow through capabilities through the generation of our scheduler load leveling tool.

Provisioning Specifics

Critical date management and validation of service order information is performed for all hot cut items. Contact is made between the CLEC and the LOC and provisioning groups for CHC work items.

CLEC Requested Negotiation (Projects)

This option available for handling requests for the same or multiple end users and end users addresses, including Due Date and FDT/CHC negotiation.



Scheduler Application

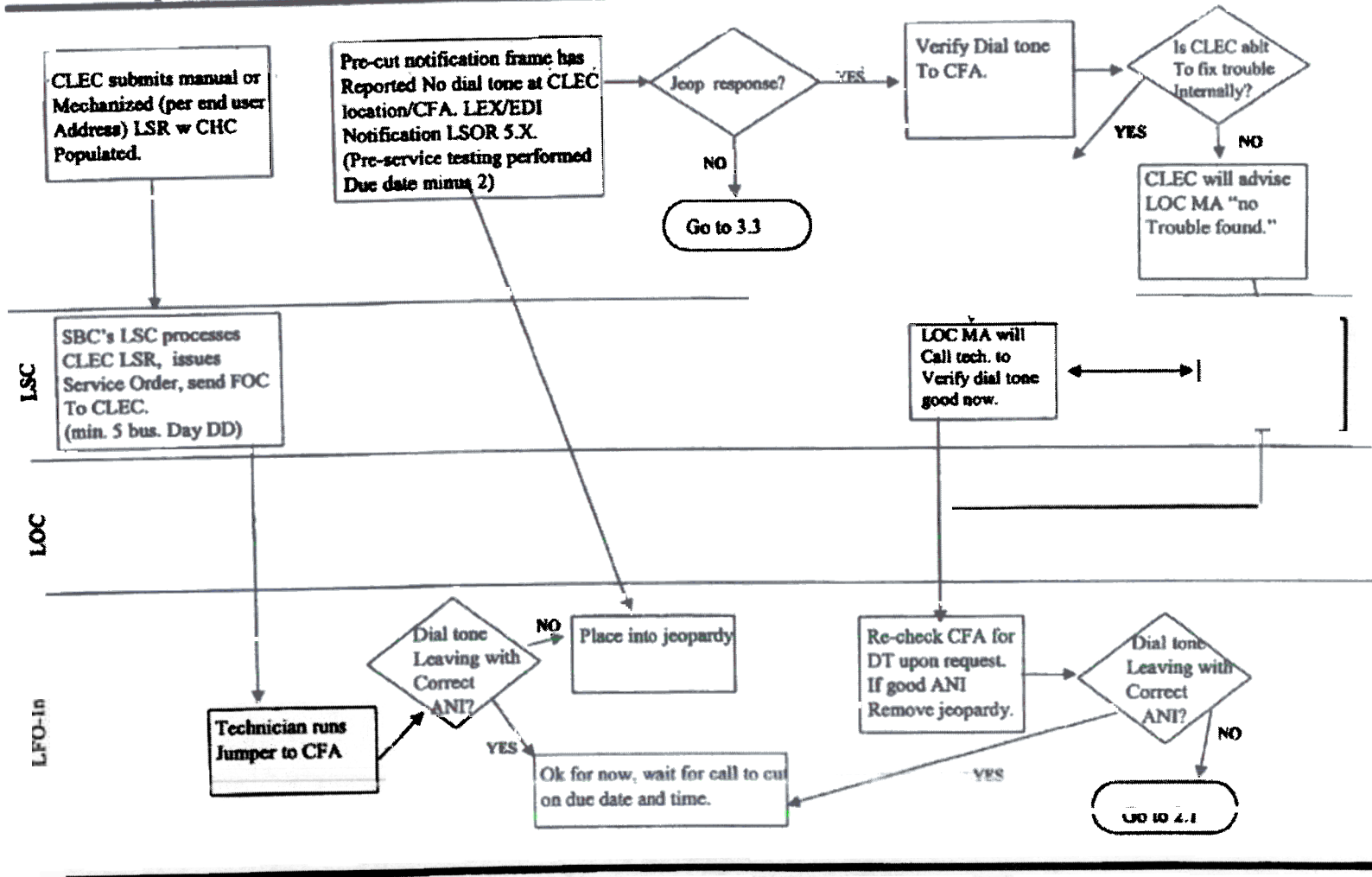
Current Attributes of the Scheduler

- **Currently utilized in Southwest region for FDT.**
- **Web-based application that allows the LSC or LOC to use as a tool to verify whether the time requested by CLEC is available using 'generic' or central office specific load leveling.**
- **Once an item is entered in the Scheduler, it is accessible by the LOC in order to manage work items in the provisioning process.**
- **CHC Hot Cut items are input in the application manually today.**
- **Currently enhancements are being implemented to allow additional flow through capabilities through the generation of our scheduler load leveling tool.**



Existing Hot Cut Process (Pg 1)

Pre-Cut Jeopardy Notification Process - FDT





Existing Hot Cut Process (Pg 2)

Pre-Cut Jeopardy Notification Process - FDT

