

**LIBERTY UTILITIES
ORGANIZATION CHART
AS AT NOVEMBER 15, 2024**

NOTES

1. Unless otherwise indicated, the ownership of all entities is 100%.
2. Alternate share, unit classes are depicted in red.

KEY



- | | | |
|----|---|---|
| 1. | Liberty Owned
Corporation or LLC |  |
| 2. | Non-Liberty Owned
Corporation or LLC |  |

CHART A

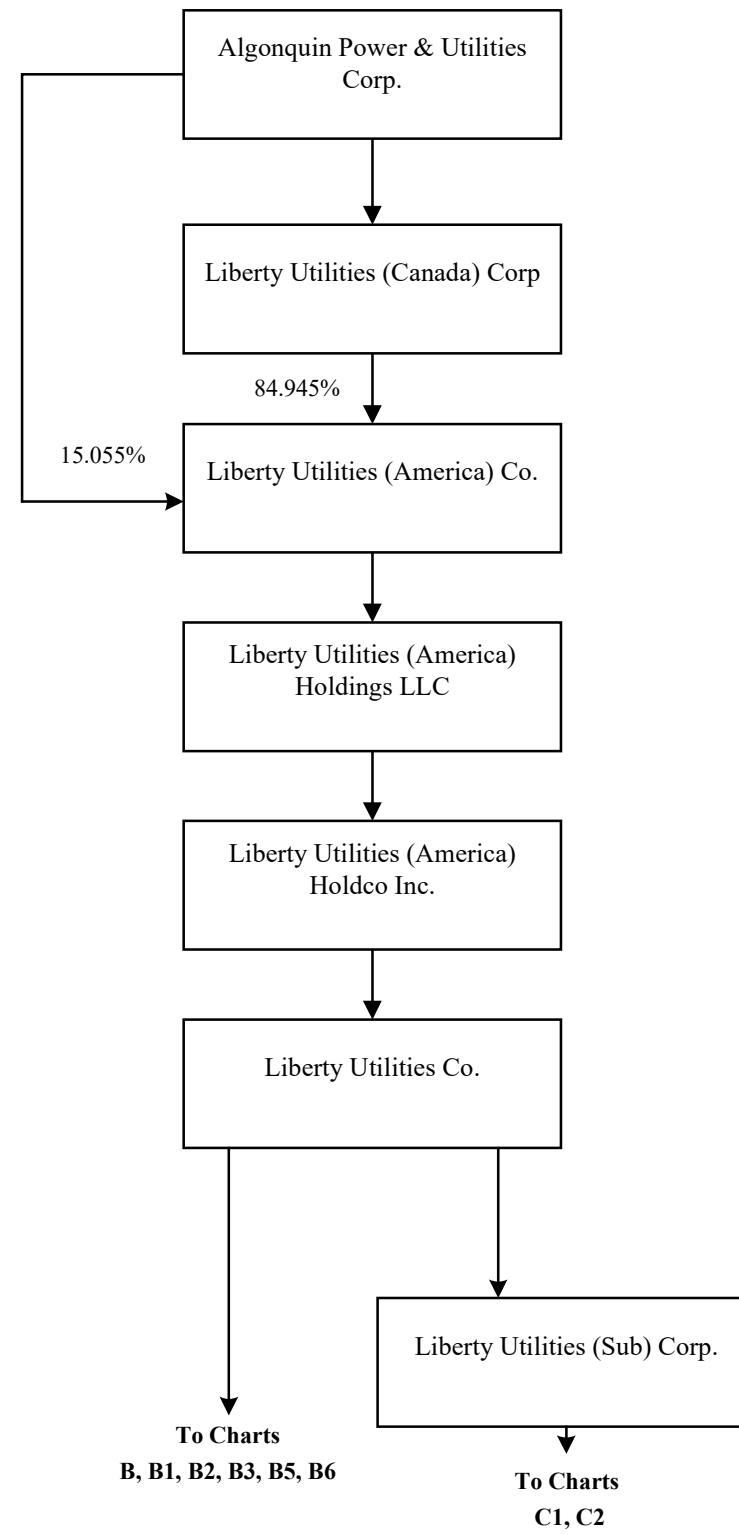


CHART B
(continued on Charts B1, B2, B3,
B5, B6)

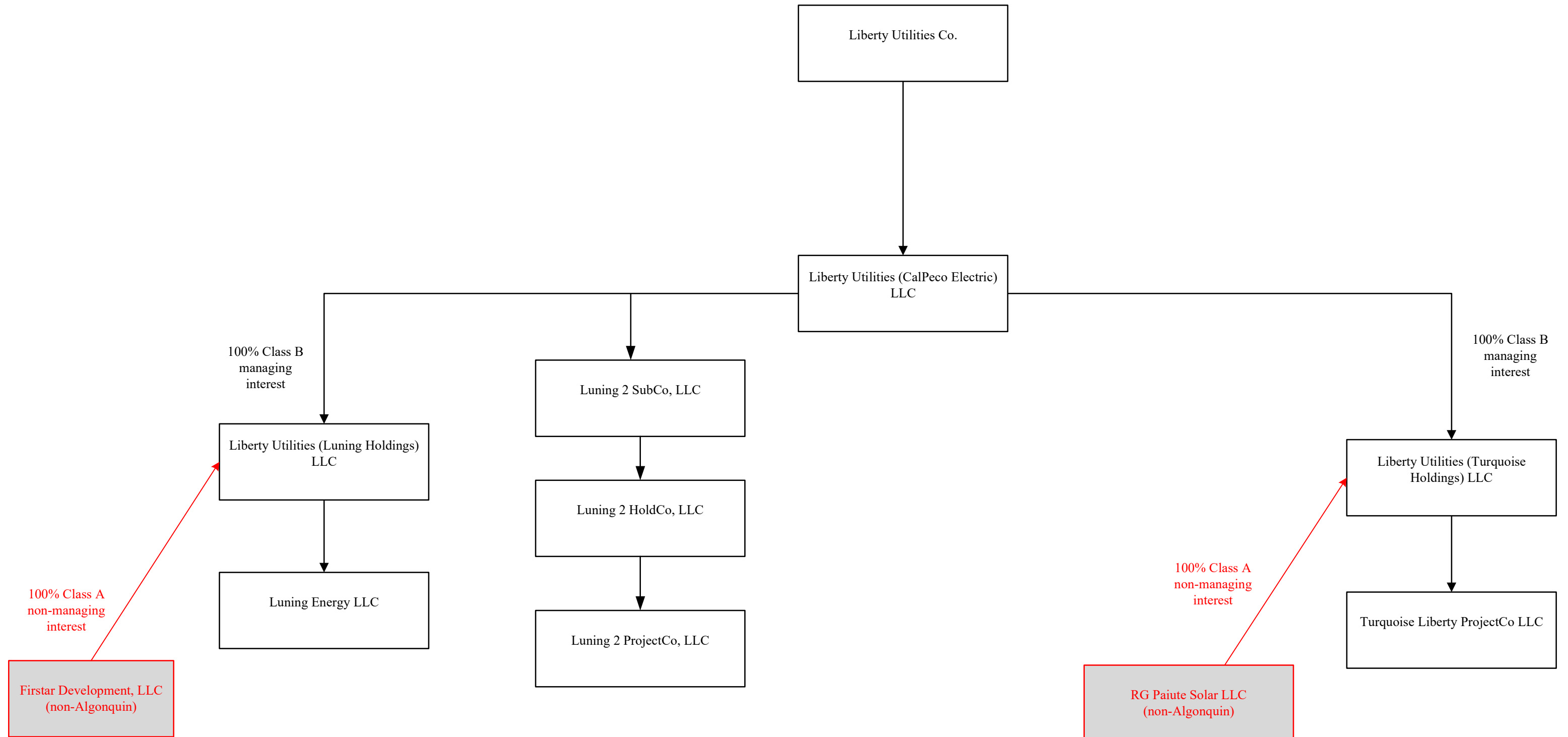
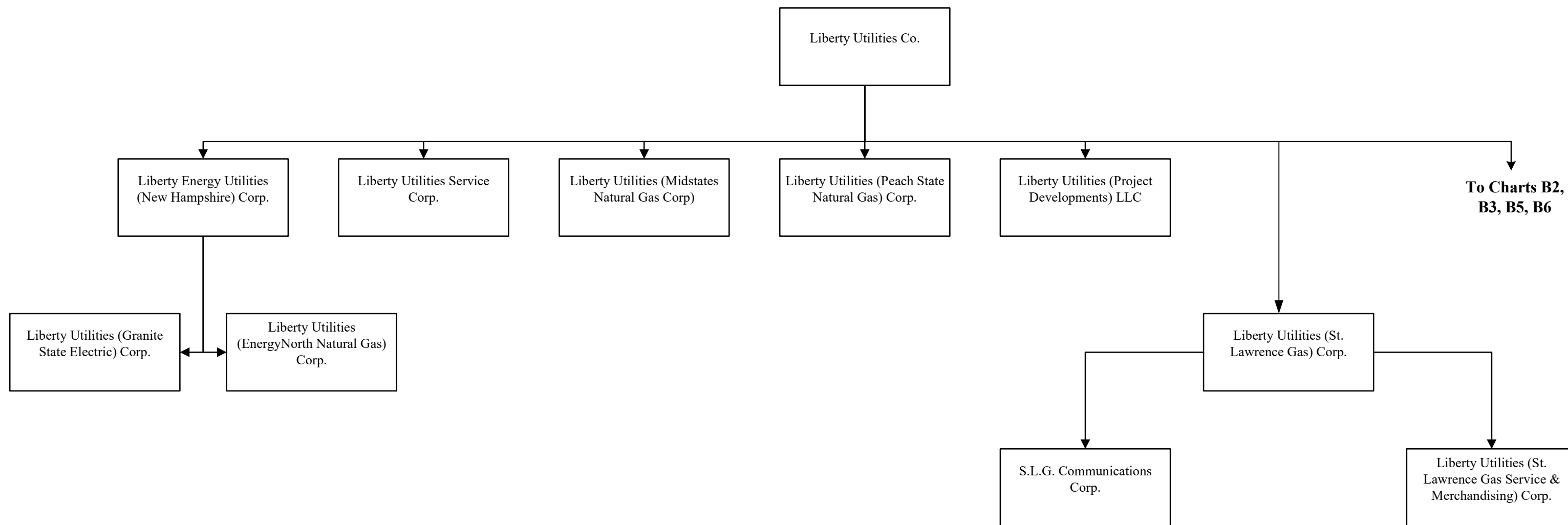
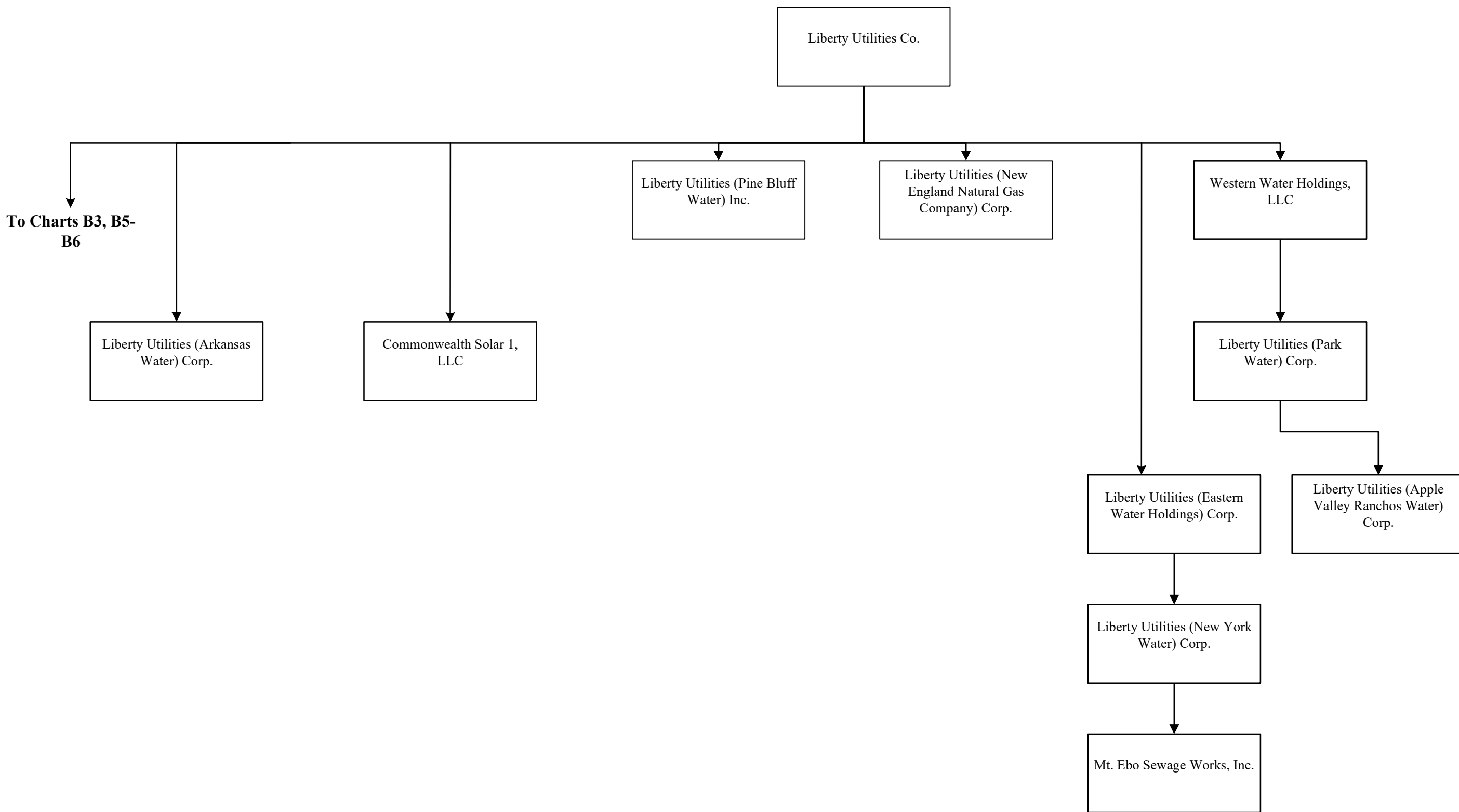


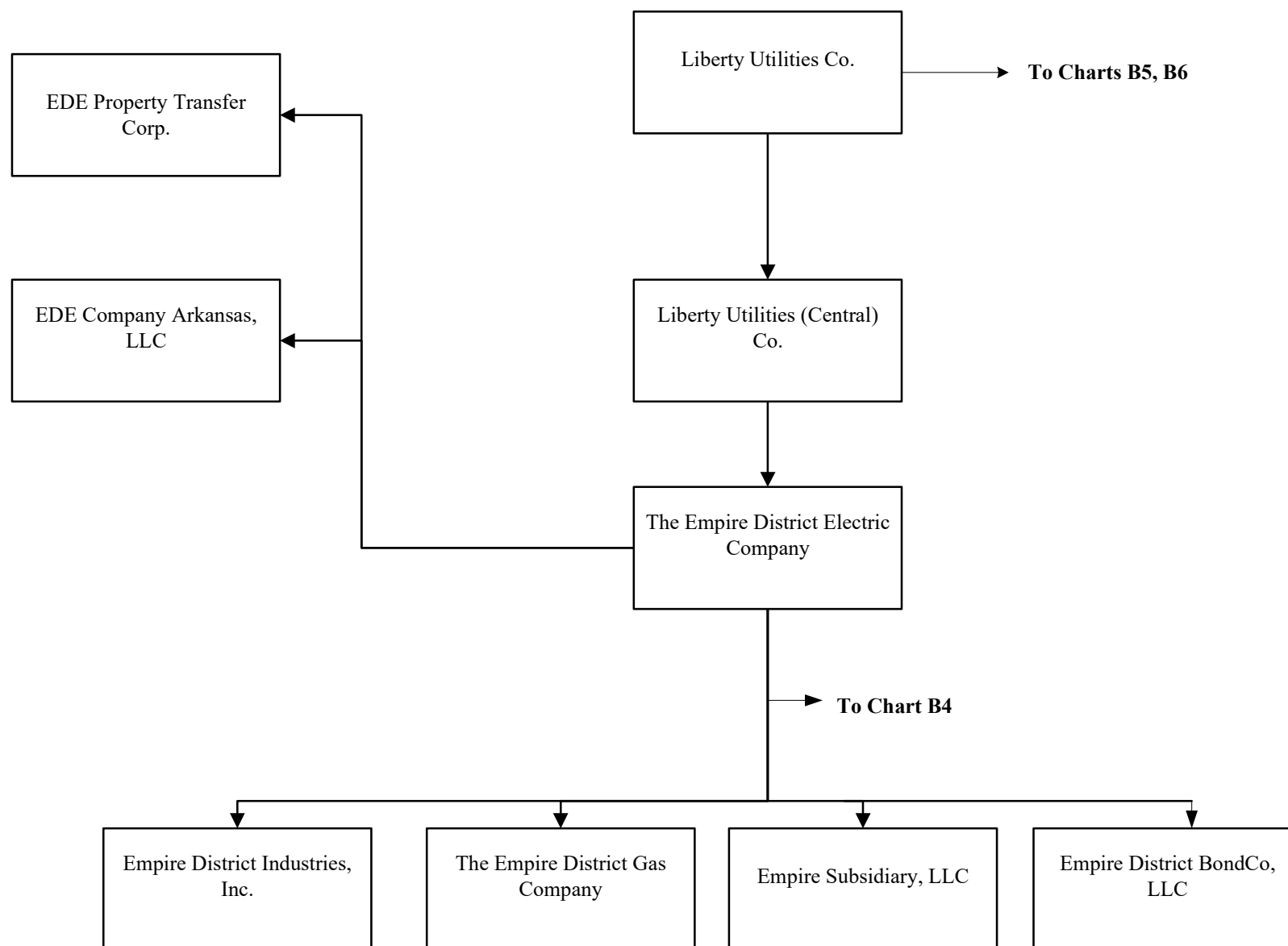
CHART B1





To Charts B3, B5-B6

CHART B3



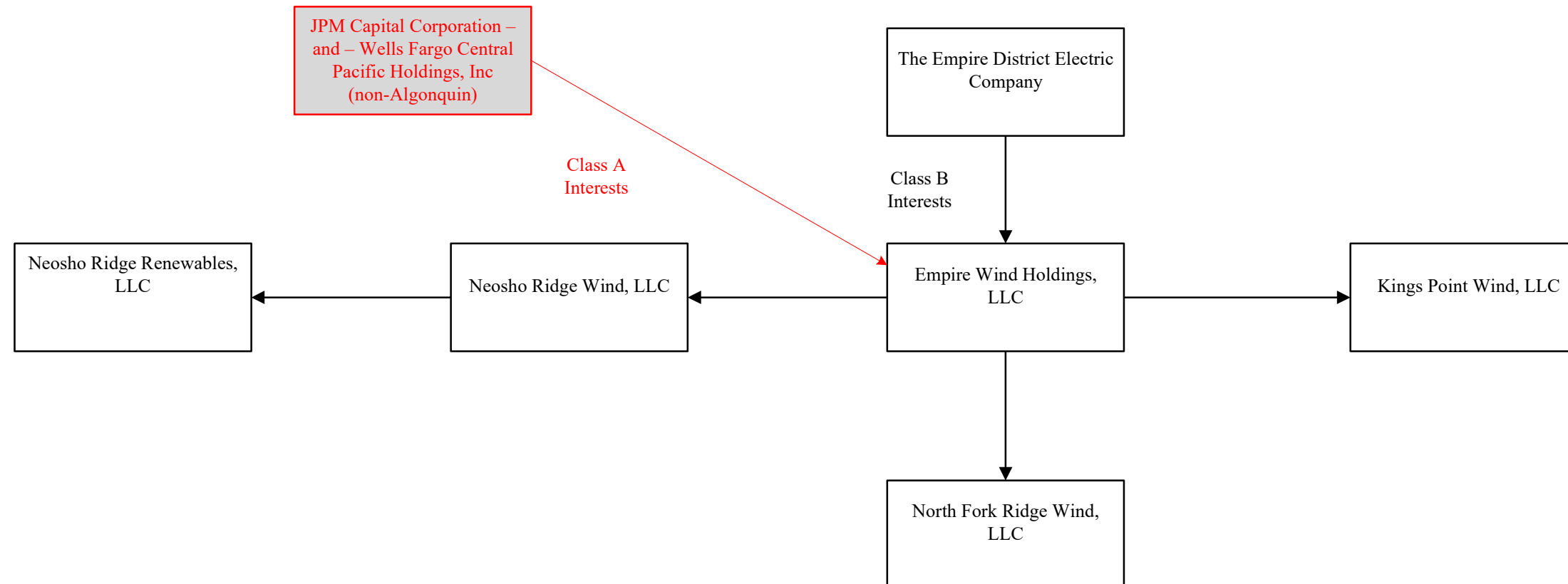
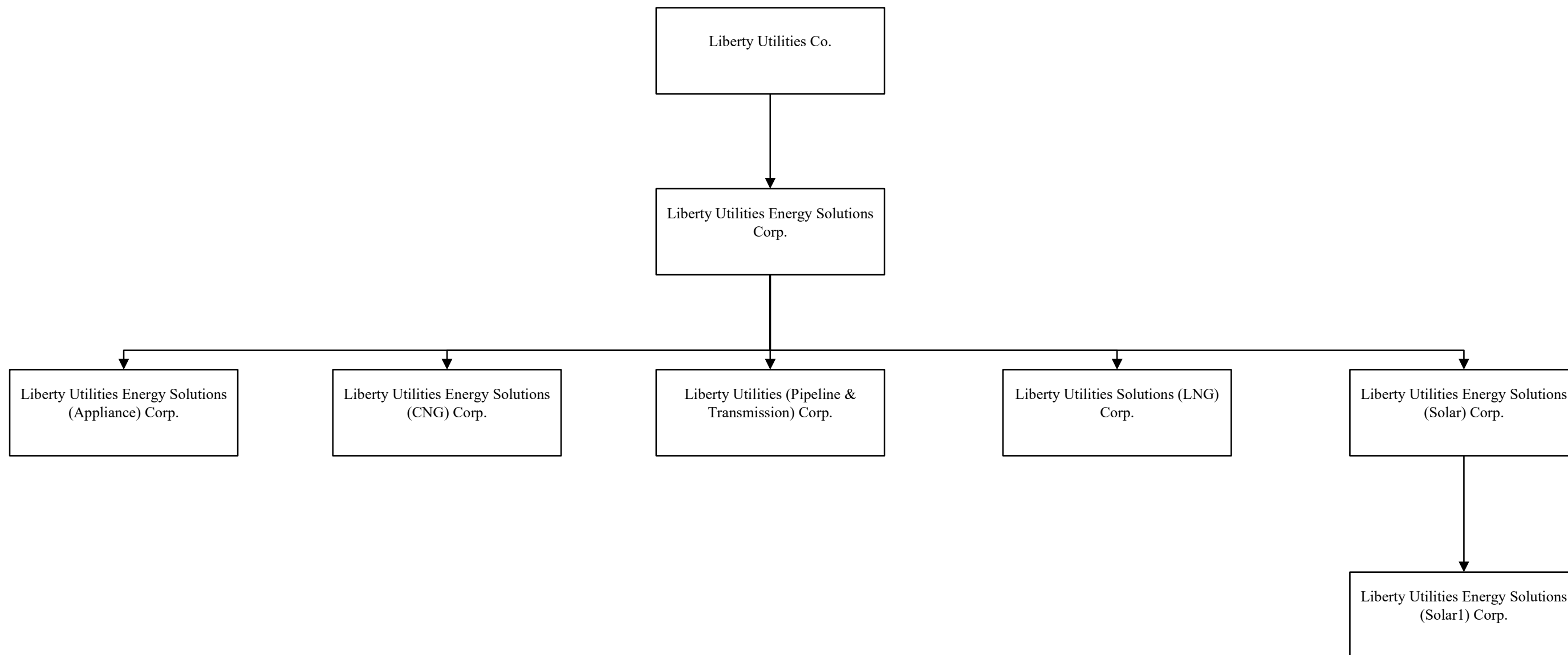


CHART B5



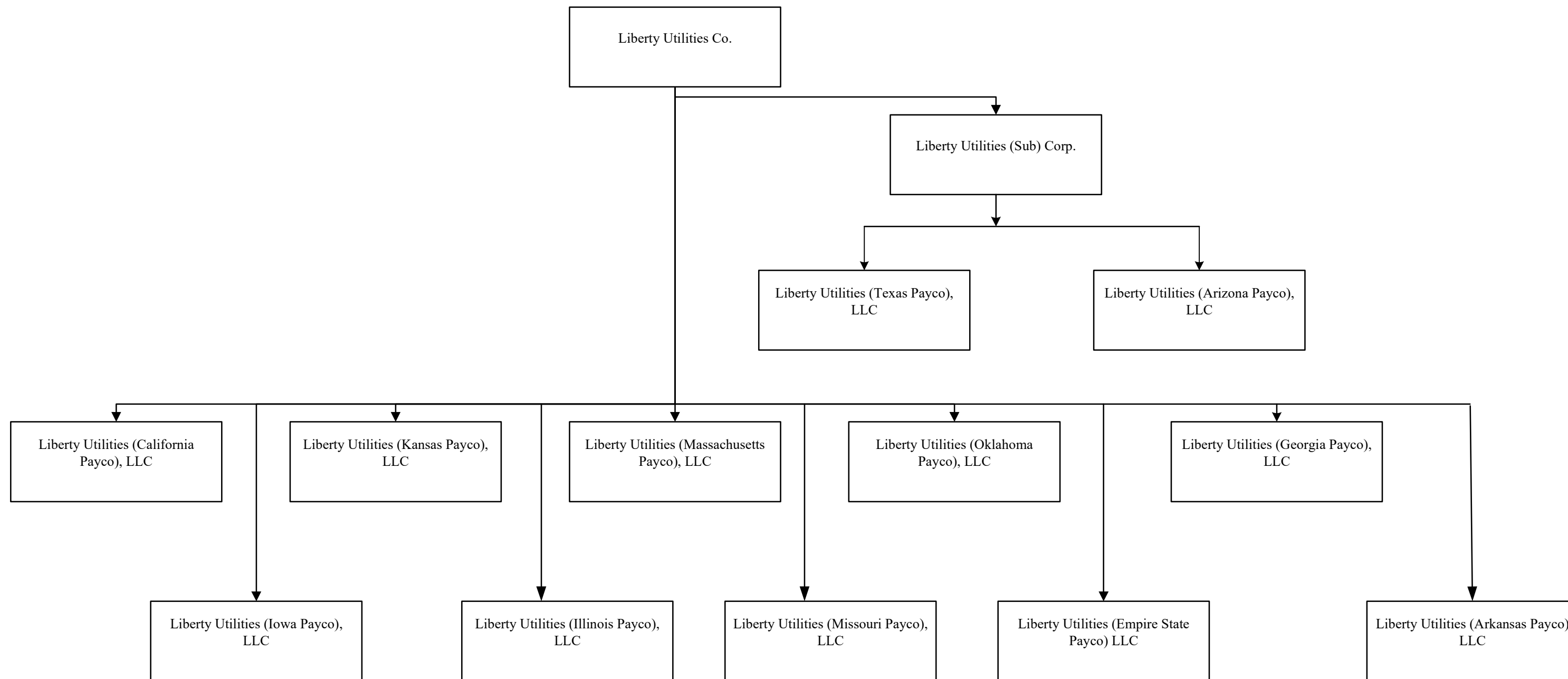


CHART C1

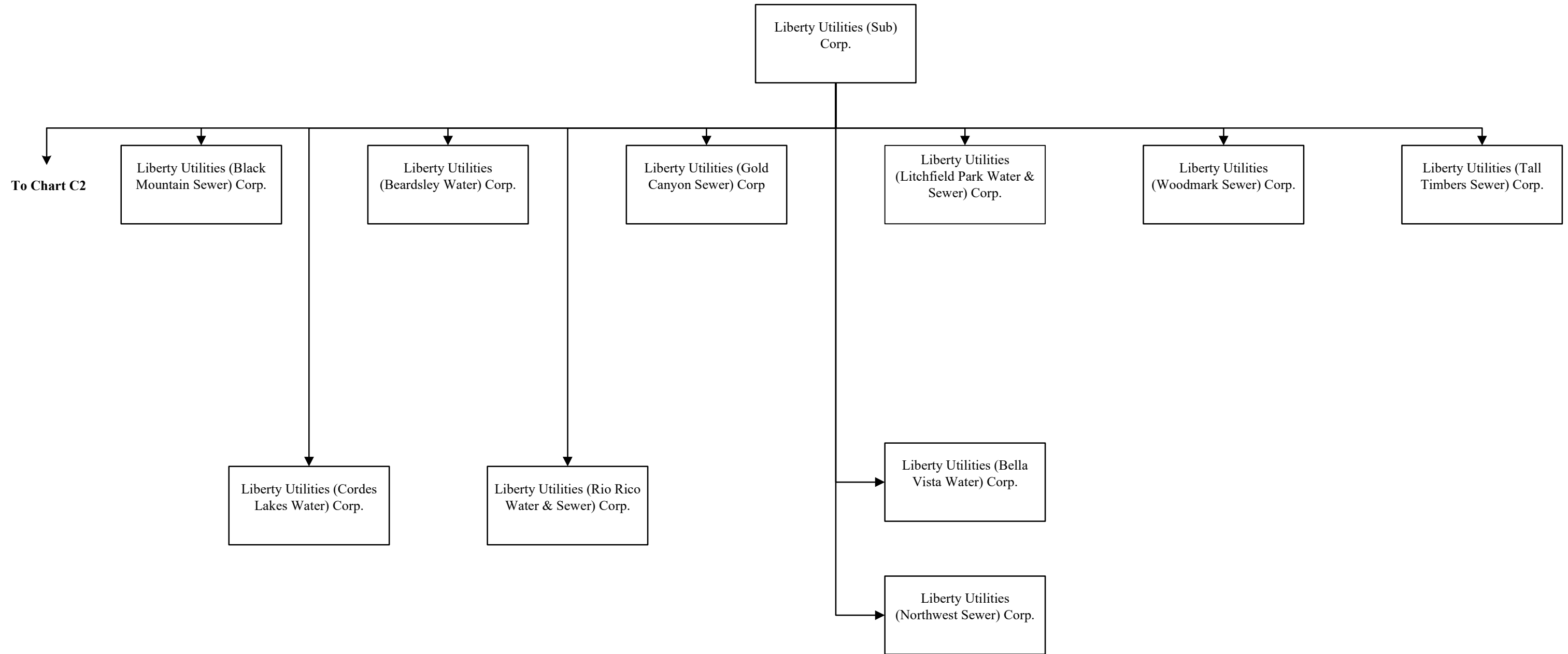


CHART C2

