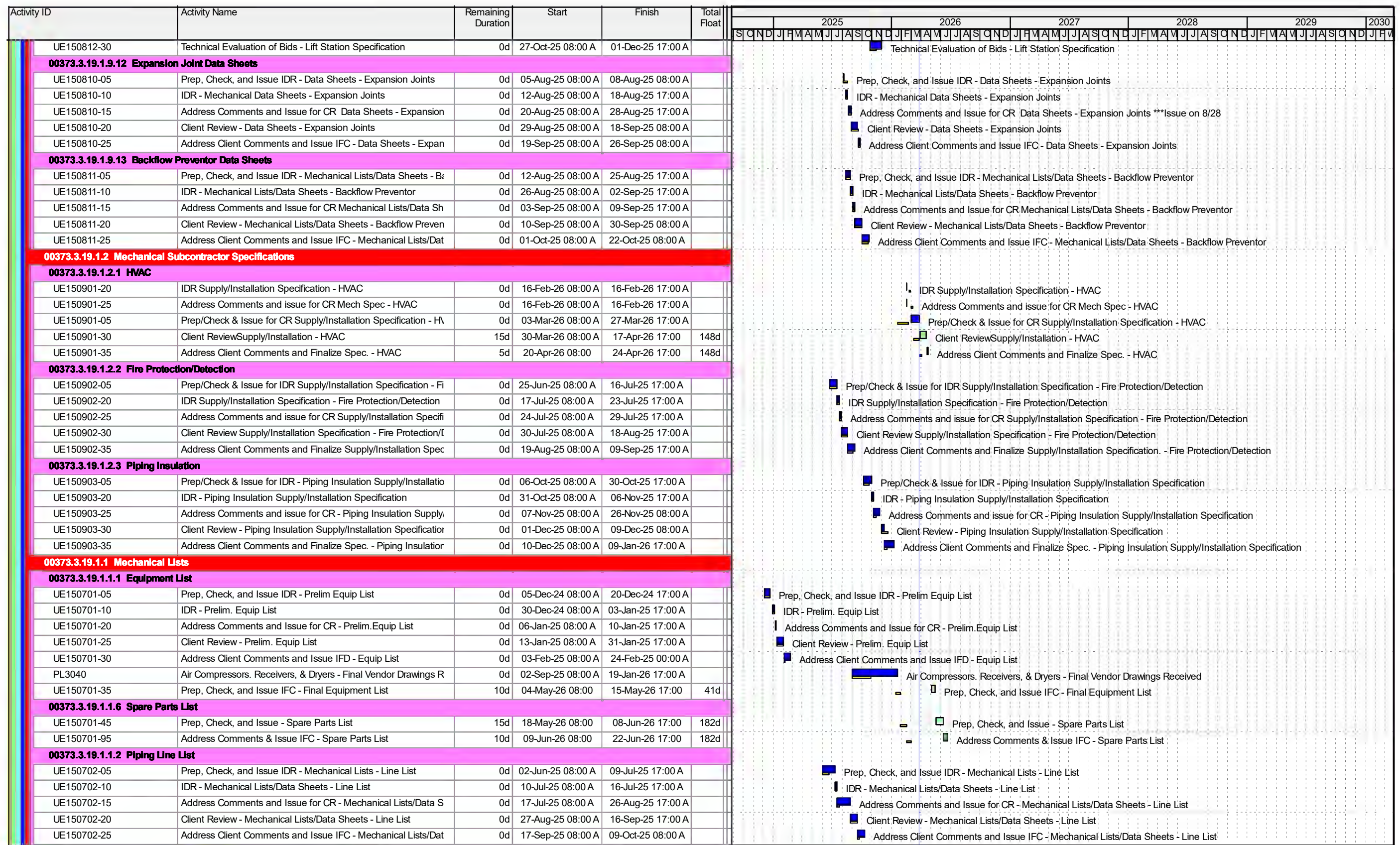
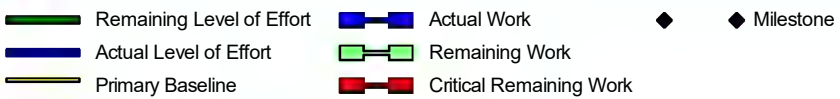


Activity ID	Activity Name	Remaining Duration	Start	Finish	Total Float	Gantt Chart																																																																																																																																																																																							
						2025					2026					2027					2028					2029			2030																																																																																																																																																																
						S	O	N	D	J	F	M	A	M	J	J	A	S	O	N	D	J	F	M	A	M	J	J	A	S	O	N	D	J	F	M	A	M	J	J	A	S	O	N	D	J	F	M	A	M	J	J	A	S	O	N	D	J	F	M	A	M	J	J	A	S	O	N	D	J	F	M	A	M	J	J	A	S	O	N	D	J	F	M	A	M	J	J	A	S	O	N	D	J	F	M	A	M	J	J	A	S	O	N	D	J	F	M	A	M	J	J	A	S	O	N	D	J	F	M	A	M	J	J	A	S	O	N	D	J	F	M	A	M	J	J	A	S	O	N	D	J	F	M	A	M	J	J	A	S	O	N	D	J	F	M	A	M	J	J	A	S	O	N	D	J	F	M	A	M	J	J	A	S	O	N	D	J	F	M	A	M	J	J	A	S	O	N	D
EM1921	Plant DCS Datalink Table (66)	0d		30-Mar-26 08:00	424d	◆ Plant DCS Datalink table (66)																																																																																																																																																																																							
EM1941	Control narratives (BOP systems) (80)	0d		30-Mar-26 08:00	164d	◆ Control narratives (BOP systems) (80)																																																																																																																																																																																							
EM1949	Control logic diagrams and logic schematics in ISA S5.1 (SAMA	0d		30-Mar-26 08:00	424d	◆ Control logic diagrams and logic schematics in ISA S5.1 (SAMA) format (86)																																																																																																																																																																																							
EM1950	Final Control logic diagrams and logic schematics in ISA S5.1 (S	0d		30-Mar-26 08:00	424d	◆ Final Control logic diagrams and logic schematics in ISA S5.1 (SAMA) format (87)																																																																																																																																																																																							
EM1951	Preliminary HMI graphics sketches (88)	0d		30-Mar-26 08:00	424d	◆ Preliminary HMI graphics sketches (88)																																																																																																																																																																																							
ES1329	Concrete Mix Designs (116)	0d		30-Mar-26 08:00	424d	◆ Concrete Mix Designs (116)																																																																																																																																																																																							
ES1330	Concrete Pour/Placement Plans (117)	0d		30-Mar-26 08:00	424d	◆ Concrete Pour/Placement Plans (117)																																																																																																																																																																																							
PL3050	Sump Pumps - Final Vendor Drawings Received	0d		30-Mar-26 08:00	5d	◆ Sump Pumps - Final Vendor Drawings Received																																																																																																																																																																																							
PL3055	Shop Fabricated Tanks - Final Vendor Drawings Received	0d		30-Mar-26 08:00	83d	◆ Shop Fabricated Tanks - Final Vendor Drawings Received																																																																																																																																																																																							
PL3060	Valves - Final Vendor Drawings Received	0d		30-Mar-26 08:00*	131d	◆ Valves - Final Vendor Drawings Received																																																																																																																																																																																							
PL3080	Electrical PDPs - Final Vendor Drawings Received	0d		30-Mar-26 08:00*	131d	◆ Electrical PDPs - Final Vendor Drawings Received																																																																																																																																																																																							
PL3106	Demin Trailer Canopy - Final Vendor Drawings Received	0d		30-Mar-26 08:00*	424d	◆ Demin Trailer Canopy - Final Vendor Drawings Received																																																																																																																																																																																							
EM1639	Large bore pipe support drawings (93)	0d		03-Apr-26 17:00	419d	◆ Large bore pipe support drawings (93)																																																																																																																																																																																							
EM1758	Electrical cable and raceway lists, including fiber optic and comr	0d		03-Apr-26 17:00	419d	◆ Electrical cable and raceway lists, including fiber optic and communication cabling (95)																																																																																																																																																																																							
EM1765	Electrical bills of material (102)	0d		03-Apr-26 17:00	419d	◆ Electrical bills of material (102)																																																																																																																																																																																							
EM1741	Electrical panel schedules (75)	0d		06-Apr-26 17:00	418d	◆ Electrical panel schedules (75)																																																																																																																																																																																							
EM1918	Instrument installation drawings (Loose supplied instruments on	0d		08-Apr-26 17:00	416d	◆ Instrument installation drawings (Loose supplied instruments only) (63)																																																																																																																																																																																							
EM1638	Piping Isometrics (92)	0d		17-Apr-26 17:00	409d	◆ Piping Isometrics (92)																																																																																																																																																																																							
EM1920	Instrument, Valve and Equipment Location Drawing (65)	0d		17-Apr-26 17:00	409d	◆ Instrument, Valve and Equipment Location Drawing (65)																																																																																																																																																																																							
EM1530	System and Equipment Description Documents (70)	0d		22-Apr-26 17:00	406d	◆ System and Equipment Description Documents (70)																																																																																																																																																																																							
EM1952	HMI graphics sketches (89)	0d		22-Apr-26 17:00	4d	◆ HMI graphics sketches (89)																																																																																																																																																																																							
EM1760	Electrical metering and protective relaying one line and three lin	0d		13-May-26 17:00	391d	◆ Electrical metering and protective relaying one line and three line diagrams (97)																																																																																																																																																																																							
EM1761	Three line diagrams (Phasing&voltage vector). Equipment shall	0d		13-May-26 17:00	391d	◆ Three line diagrams (Phasing&voltage vector). Equipment shall be shown on the drawings based on their loc																																																																																																																																																																																							
EM1580	Final consolidated equipment, valve, instrument, etc. lists (135)	0d		15-May-26 17:00	389d	◆ Final consolidated equipment, valve, instrument, etc. lists (135)																																																																																																																																																																																							
EM1763	Underground raceway and grounding requirements (100)	0d		19-May-26 17:00	387d	◆ Underground raceway and grounding requirements (100)																																																																																																																																																																																							
EM1770	Schematics and wiring diagrams of all Contractor supplied equip	0d		08-Jun-26 17:00	374d	◆ Schematics and wiring diagrams of all Contractor supplied equipment requiring electrical connections (107)																																																																																																																																																																																							
EM1550	Spare Parts Lists (startup/commissioning and recommended): S	0d		22-Jun-26 17:00	364d	◆ Spare Parts Lists (startup/commissioning and recommended): See "Spare Parts" Section A5.0 (84)																																																																																																																																																																																							
EM1953	Preliminary Alarm list in Owner's standard format, including Cont	0d		07-Jul-26 17:00	354d	◆ Preliminary Alarm list in Owner's standard format, including Contractor's recommended alarm value settin																																																																																																																																																																																							
EM1954	Alarm list in Owner's standard format, including Contractor's rec	0d		07-Jul-26 17:00	354d	◆ Alarm list in Owner's standard format, including Contractor's recommended alarm value setting(s) (91)																																																																																																																																																																																							
EM1766	Electrical calcs including short circuit, running & starting voltage	0d		21-Jul-26 17:00	344d	◆ Electrical calcs including short circuit, running & starting voltage drops (Load Flow), and arc flash (103)																																																																																																																																																																																							
EM1260	Final Electrical Load List (To Be Updated after Equipment Data	0d		11-Aug-26 17:00	329d	◆ Final Electrical Load List (To Be Updated after Equipment Data becomes available) (40)																																																																																																																																																																																							
EM1768	Electrical system stability study (105)	0d		18-Aug-26 17:00	324d	◆ Electrical system stability study (105)																																																																																																																																																																																							
EM1740	Final grounding and cathodic protection survey reports (74)	0d		27-Aug-26 09:00	318d	◆ Final grounding and cathodic protection survey reports (74)																																																																																																																																																																																							
EM1640	Lubricating oil/Grease list: (94)	0d		22-Feb-27 10:00	196d	◆ Lubricating oil/Grease list: (94)																																																																																																																																																																																							
00373.3 ENGINEERING																																																																																																																																																																																													
00373.3.19 Common																																																																																																																																																																																													
00373.3.19.20 General																																																																																																																																																																																													
UE0530	Prepare 30% Design Review Agenda	0d	23-May-25 08:00 A	30-May-25 17:00 A		Prepare 30% Design Review Agenda																																																																																																																																																																																							
UE0535	30% Design Review Meeting	0d		04-Jun-25 08:00 A		◆ 30% Design Review Meeting																																																																																																																																																																																							
UE0560	Prepare 60% Design Review Agenda	0d	05-Nov-25 08:00 A	12-Nov-25 17:00 A		Prepare 60% Design Review Agenda																																																																																																																																																																																							
UE0565	60% Design Review Meeting	0d		12-Nov-25 17:00 A		◆ 60% Design Review Meeting																																																																																																																																																																																							
UE0590	Prepare 90% Design Review Agenda	5d	06-May-26 08:00*	12-May-26 17:00	34d	Prepare 90% Design Review Agenda																																																																																																																																																																																							
UE0595	90% Design Review Meeting	0d		13-May-26 08:00*	34d	◆ 90% Design Review Meeting																																																																																																																																																																																							
00373.3.19.20.1 Design Criteria																																																																																																																																																																																													
00373.3.19.20.1.1 C/S/A Design Criteria																																																																																																																																																																																													
UE13GEN-05	Prep, Check, and Issue CR - C/S/A Design Criteria	0d	09-Dec-24 08:00 A	13-Jan-25 08:00 A		Prep, Check, and Issue CR - C/S/A Design Criteria																																																																																																																																																																																							
UE13GEN-20	Client Review - C/S/A. Design Criteria	0d	14-Jan-25 08:00 A	04-Feb-25 17:00 A		Client Review - C/S/A. Design Criteria																																																																																																																																																																																							
UE13GEN-25	Address Client Comments and Issue Final - C/S/A Design Criter	0d	05-Feb-25 08:00 A	24-Feb-25 17:00 A		Address Client Comments and Issue Final - C/S/A Design Criteria																																																																																																																																																																																							
00373.3.19.20.1.2 Mechanical Design Criteria																																																																																																																																																																																													
UE15GEN-05	Prep, Check, and Issue CR - Mech. Design Criteria	0d	09-Dec-24 08:00 A	20-Jan-25 08:00 A		Prep, Check, and Issue CR - Mech. Design Criteria																																																																																																																																																																																							



	Remaining Level of Effort		Actual Work		Milestone
	Actual Level of Effort		Remaining Work		Critical Remaining Work
	Primary Baseline				

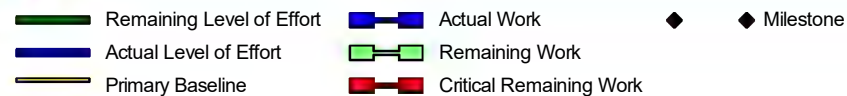
Activity ID	Activity Name	Remaining Duration	Start	Finish	Total Float	Gantt Chart (2025-2030)																																															
						2025	2026	2027	2028	2029	2030																																										
UE170810-30	Client Review Procurement Specification - Heat Trace	17d	01-Apr-26 08:00 A	21-Apr-26 17:00	47d	Gantt bar for Client Review Procurement Specification - Heat Trace																																															
UE170810-35	Address Client Comments and Finalize Spec. - Heat Trace	10d	22-Apr-26 08:00	05-May-26 17:00	47d	Gantt bar for Address Client Comments and Finalize Spec. - Heat Trace																																															
UE170810-40	Technical Evaluation of Bids - Heat Trace	15d	11-Jun-26 08:00	01-Jul-26 17:00	47d	Gantt bar for Technical Evaluation of Bids - Heat Trace																																															
00373.3.19.2.8.12 Electrical Installation Specification																																																					
UE170901-05	Prep/Check & Issue for IDR Specification - Electrical Installation	0d	11-Aug-25 08:00 A	11-Aug-25 17:00 A		Gantt bar for Prep/Check & Issue for IDR Specification - Electrical Installation																																															
UE170901-20	IDR Procurement Specification - Electrical Installation Requirements	0d	11-Aug-25 08:00 A	11-Aug-25 17:00 A		Gantt bar for IDR Procurement Specification - Electrical Installation Requirements																																															
UE170901-25	Address Comments and issue for CR Spec - Electrical Installation	0d	11-Aug-25 08:00 A	11-Aug-25 17:00 A		Gantt bar for Address Comments and issue for CR Spec - Electrical Installation																																															
UE170901-30	Client Review Procurement Specification - Electrical Installation	0d	11-Aug-25 08:00 A	11-Aug-25 17:00 A		Gantt bar for Client Review Procurement Specification - Electrical Installation																																															
UE170901-35	Address Client Comments and Issue Final - Electrical Installation	0d	11-Aug-25 08:00 A	11-Aug-25 17:00 A		Gantt bar for Address Client Comments and Issue Final - Electrical Installation																																															
00373.3.19.2.1 Calculations & Studies																																																					
00373.3.19.2.1.1 Electrical LF/SC Calculation																																																					
UE170501-05	Prepare & Issue CR - Preliminary Electrical LF/SC Calculations	0d	03-Jan-25 08:00 A	07-Feb-25 17:00 A		Gantt bar for Prepare & Issue CR - Preliminary Electrical LF/SC Calculations																																															
UE170501-20	Client Review - Preliminary Electrical LF/SC Calculations	0d	10-Feb-25 08:00 A	28-Feb-25 17:00 A		Gantt bar for Client Review - Preliminary Electrical LF/SC Calculations																																															
UE170501-25	Address CR Comments & Issue Preliminary Electrical LF/SC Calculations	0d	03-Mar-25 08:00 A	21-Mar-25 17:00 A		Gantt bar for Address CR Comments & Issue Preliminary Electrical LF/SC Calculations																																															
UE170501-30	Prepare & Issue CR - Final Electrical LF/SC Calculations	26d	08-May-26 08:00	15-Jun-26 17:00	41d	Gantt bar for Prepare & Issue CR - Final Electrical LF/SC Calculations																																															
UE170501-35	Client Review - Final Electrical LF/SC Calculations	15d	16-Jun-26 08:00	07-Jul-26 17:00	41d	Gantt bar for Client Review - Final Electrical LF/SC Calculations																																															
UE170501-40	Address CR Comments & Issue Final Electrical LF/SC Calculations	10d	08-Jul-26 08:00	21-Jul-26 17:00	41d	Gantt bar for Address CR Comments & Issue Final Electrical LF/SC Calculations																																															
00373.3.19.2.1.2 Electrical Isophase Bus Sizing Calculation																																																					
UE170502-05	Prepare Preliminary Isophase Bus Sizing Calculation	0d	30-Dec-24 08:00 A	14-Feb-25 17:00 A		Gantt bar for Prepare Preliminary Isophase Bus Sizing Calculation																																															
UE170502-10	Issue Preliminary Electrical Isophase Bus Sizing Calculation	0d	14-Feb-25 08:00 A	14-Feb-25 17:00 A		Gantt bar for Issue Preliminary Electrical Isophase Bus Sizing Calculation																																															
UE170502-15	Review & Revise Isophase Bus Sizing Calculation	0d	11-Apr-25 08:00 A	28-Apr-25 17:00 A		Gantt bar for Review & Revise Isophase Bus Sizing Calculation																																															
UE170502-20	Issue Final Isophase Bus Sizing Calculation	0d	29-Apr-25 08:00 A	29-Apr-25 17:00 A		Gantt bar for Issue Final Isophase Bus Sizing Calculation																																															
00373.3.19.2.1.3 125VDC/120VAC Load Calculation																																																					
UE170503-05	Prepare & Issue Preliminary 125VDC/120VAC Load Calculation	0d	13-Nov-25 08:00 A	29-Dec-25 17:00 A		Gantt bar for Prepare & Issue Preliminary 125VDC/120VAC Load Calculation																																															
UE170503-10	Issue Preliminary 125VDC/120VAC Load Calculation	0d	29-Dec-25 08:00 A	29-Dec-25 17:00 A		Gantt bar for Issue Preliminary 125VDC/120VAC Load Calculation																																															
UE170503-15	Address Comments & Issue for CR 125VDC/120VAC Load Calculation	0d	30-Dec-25 08:00 A	14-Jan-26 17:00 A		Gantt bar for Address Comments & Issue for CR 125VDC/120VAC Load Calculation																																															
UE170503-30	Client Review 125VDC/120VAC Load Calculation	0d	15-Jan-26 08:00 A	05-Feb-26 08:00 A		Gantt bar for Client Review 125VDC/120VAC Load Calculation																																															
UE170503-20	Address Client Comments & Finalize Spec 125VDC/120VAC Load Calculation	0d	06-Feb-26 08:00 A	16-Mar-26 17:00 A		Gantt bar for Address Client Comments & Finalize Spec 125VDC/120VAC Load Calculation																																															
00373.3.19.2.1.4 Lightning Protection Calculation																																																					
UE170504-05	Prepare Preliminary Lightning Protection Calculation & Issue for IDR	0d	07-Aug-25 08:00 A	13-Oct-25 17:00 A		Gantt bar for Prepare Preliminary Lightning Protection Calculation & Issue for IDR																																															
UE170504-10	IDR Preliminary Lightning Protection Calculation	0d	14-Oct-25 08:00 A	20-Oct-25 17:00 A		Gantt bar for IDR Preliminary Lightning Protection Calculation																																															
UE170504-15	Address IDR Comments & Issue for CR - Lightning Protection Calculation	0d	21-Oct-25 08:00 A	27-Oct-25 17:00 A		Gantt bar for Address IDR Comments & Issue for CR - Lightning Protection Calculation																																															
UE170504-30	Client Review - Lightning Protection Calculation	0d	28-Oct-25 08:00 A	10-Nov-25 17:00 A		Gantt bar for Client Review - Lightning Protection Calculation																																															
UE170504-20	Address Client Comments & Issue IFC - Lightning Protection Calculation	0d	11-Nov-25 08:00 A	01-Dec-25 08:00 A		Gantt bar for Address Client Comments & Issue IFC - Lightning Protection Calculation																																															
00373.3.19.2.1.5 Relay Setting & Coordination Study																																																					
UE170505-05	Prepare Preliminary Relay Setting & Coordination Study	40d	23-Jun-26 08:00	18-Aug-26 17:00	41d	Gantt bar for Prepare Preliminary Relay Setting & Coordination Study																																															
UE170505-10	Issue for CR - Preliminary Relay Setting & Coordination Study	1d	18-Aug-26 08:00	18-Aug-26 17:00	41d	Gantt bar for Issue for CR - Preliminary Relay Setting & Coordination Study																																															
UE170505-15	Client Review - Preliminary Relay Setting & Coordination Study	15d	19-Aug-26 08:00	09-Sep-26 17:00	46d	Gantt bar for Client Review - Preliminary Relay Setting & Coordination Study																																															
UE170505-20	Review & Revise Relay Setting & Coordination Study	15d	17-Sep-26 08:00	07-Oct-26 17:00	41d	Gantt bar for Review & Revise Relay Setting & Coordination Study																																															
UE170505-25	Issue Final Relay Setting & Coordination Study	1d	07-Oct-26 08:00	07-Oct-26 17:00	41d	Gantt bar for Issue Final Relay Setting & Coordination Study																																															
00373.3.19.2.1.8 Cable Take Off																																																					
UE171182-35	MV Cable Take Off	0d	10-Nov-25 08:00 A	03-Dec-25 17:00 A		Gantt bar for MV Cable Take Off																																															
UE171182-45	LV Cable Take Off	0d	04-Dec-25 08:00 A	26-Feb-26 17:00 A		Gantt bar for LV Cable Take Off																																															
UE171182-55	Control Cable Take Off	5d	27-Feb-26 08:00 A	03-Apr-26 17:00	106d	Gantt bar for Control Cable Take Off																																															
UE171182-65	Instrumentation Cable Take Off	45d	06-Apr-26 08:00	08-Jun-26 17:00	106d	Gantt bar for Instrumentation Cable Take Off																																															
00373.3.19.2.1.6 ARC Flash Study																																																					
UE170506-05	Prepare Preliminary ARC Flash Study	40d	08-Oct-26 08:00	04-Dec-26 17:00	41d	Gantt bar for Prepare Preliminary ARC Flash Study																																															
UE170506-10	Issue for CR - Preliminary ARC Flash Study	1d	04-Dec-26 08:00	04-Dec-26 17:00	41d	Gantt bar for Issue for CR - Preliminary ARC Flash Study																																															
UE170506-15	Client Review - Preliminary ARC Flash Study	15d	07-Dec-26 08:00	28-Dec-26 17:00	41d	Gantt bar for Client Review - Preliminary ARC Flash Study																																															
UE170506-20	Review & Revise ARC Flash Study	15d	29-Dec-26 08:00	19-Jan-27 17:00	41d	Gantt bar for Review & Revise ARC Flash Study																																															



Activity ID	Activity Name	Remaining Duration	Start	Finish	Total Float	Gantt Chart (2025-2030)																																																			
						2025					2026					2027					2028					2029					2030																										
00373.3.19.2.5 Cable/Conduit List																																																									
UE171113-05	Prepare Initial Cable/Conduit List Set-up	0d	16-Dec-24 08:00 A	14-Feb-25 17:00 A		Prepare Initial Cable/Conduit List Set-up																																																			
UE171113-10	Input Information - Cable/Conduit List	0d	20-Feb-25 08:00 A	12-Aug-25 17:00 A		Input Information - Cable/Conduit List																																																			
UE171113-15	Prep & Issue for IDR - Cable/Conduit List	0d	13-Aug-25 08:00 A	01-Oct-25 17:00 A		Prep & Issue for IDR - Cable/Conduit List																																																			
UE171113-20	Address IDR Comments & Issue CR - Cable/Conduit List	5d	02-Oct-25 08:00 A	03-Apr-26 17:00	81d	Address IDR Comments & Issue CR - Cable/Conduit List																																																			
UE171113-25	Incorporate information & Issue for CR - Cable/Conduit List	1d	06-Apr-26 08:00	06-Apr-26 17:00	120d	Incorporate information & Issue for CR - Cable/Conduit List																																																			
00373.3.19.2.7 Schematics & Wiring Diagrams																																																									
00373.3.19.2.7.3 Schematics & Wiring Diagrams - HV & Collector Yard Interfaces																																																									
UE171151-07	Prepare Wiring & Schematic Diagrams - HV & Collector Interfac	0d	21-Apr-25 08:00 A	16-Jun-25 17:00 A		Prepare Wiring & Schematic Diagrams - HV & Collector Interfaces																																																			
UE171151-10	Receive vendor Information - Wiring & Schematic Diagrams - HV	0d	16-Jun-25 08:00 A	27-Jun-25 17:00 A		Receive vendor Information - Wiring & Schematic Diagrams - HV & Collector Interfaces																																																			
UE171151-15	Incorporate information & Issue for CR - Wiring & Schematic Di	0d	30-Jun-25 08:00 A	15-Sep-25 08:00 A		Incorporate information & Issue for CR - Wiring & Schematic Diagrams - HV & Collector Interfaces																																																			
UE171151-20	Client Review - Wiring & Schematic Diagrams - HV & Collector I	0d	15-Sep-25 08:00 A	03-Oct-25 17:00 A		Client Review - Wiring & Schematic Diagrams - HV & Collector Interfaces																																																			
UE171151-25	Address Client Comments & Update with Final Vendor info & Iss	0d	06-Oct-25 08:00 A	20-Feb-26 08:00 A		Address Client Comments & Update with Final Vendor info & Issue IFC - Wiring & Schematics - HV & Collector Inte																																																			
00373.3.19.2.7.4 Schematics Diagrams - Medium Voltage System																																																									
UE171155-05	Prepare Wiring & Schematic Diagrams - Medium Voltage Syste	0d	21-Apr-25 08:00 A	16-Jun-25 08:00 A		Prepare Wiring & Schematic Diagrams - Medium Voltage System																																																			
UE171155-10	Receive Final Vendor Information - Schematic Diagrams - Mediu	0d	25-Jun-25 08:00 A	26-Sep-25 17:00 A		Receive Final Vendor Information - Schematic Diagrams - Medium Voltage System																																																			
UE171155-15	Incorporate Vendor Information & Issue for CR - Schematic Dia	0d	20-Feb-26 08:00 A	20-Feb-26 17:00 A		Incorporate Vendor Information & Issue for CR - Schematic Diagrams - Medium Voltage System (N/A)																																																			
UE171155-20	Client Review - Schematic Diagrams - Medium Voltage System	0d	20-Feb-26 08:00 A	20-Feb-26 17:00 A		Client Review - Schematic Diagrams - Medium Voltage System (N/A)																																																			
UE171155-25	Address Client Comments & Update with Final Vendor info & Iss	0d	20-Feb-26 08:00 A	20-Feb-26 17:00 A		Address Client Comments & Update with Final Vendor info & Issue IFC - Schematics - Medium Voltage System (N/A)																																																			
UE171157-15	Receive Square D Final Vendor Drawings - Schematic Diagram	1d	27-Jul-26 08:00*	27-Jul-26 17:00	109d	Receive Square D Final Vendor Drawings - Schematic Diagrams - Medium Voltage System																																																			
UE171157-135	Prepare Schematic Diagrams & Issue for CR - Medium Voltage	24d	28-Jul-26 08:00	28-Aug-26 17:00	109d	Prepare Schematic Diagrams & Issue for CR - Medium Voltage System																																																			
UE171157-155	Client Review - & Schematic Diagrams - Medium Voltage Syste	15d	31-Aug-26 08:00	21-Sep-26 17:00	109d	Client Review - & Schematic Diagrams - Medium Voltage System																																																			
UE171157-165	Address Client Comments & Issue IFC - Schematics - Medium	10d	22-Sep-26 08:00	05-Oct-26 17:00	109d	Address Client Comments & Issue IFC - Schematics - Medium Voltage System -																																																			
00373.3.19.2.7.4.4 Wiring Diagrams - Medium Voltage System																																																									
UE171155-45	Receive Square D Vendor Drawings - Wiring Diagrams - Mediu	0d	12-May-26 08:00*	12-May-26 08:00	76d	Receive Square D Vendor Drawings - Wiring Diagrams - Medium Voltage System																																																			
UE171155-35	Incorporate Vendor Info & Prepare Wiring Diagrams & Issue for	30d	12-May-26 08:00	23-Jun-26 17:00	76d	Incorporate Vendor Info & Prepare Wiring Diagrams & Issue for IDR - Medium Voltage System																																																			
UE171155-85	IDR - Medium Voltage System	5d	24-Jun-26 08:00	30-Jun-26 17:00	76d	IDR - Medium Voltage System																																																			
UE171155-55	Address IDR Comments & Issue for CR - Diagrams - Medium	15d	01-Jul-26 08:00	22-Jul-26 17:00	76d	Address IDR Comments & Issue for CR - Diagrams - Medium Voltage System																																																			
UE171155-65	Client Review - Diagrams - Medium Voltage System	15d	23-Jul-26 08:00	12-Aug-26 17:00	76d	Client Review - Diagrams - Medium Voltage System																																																			
UE171157-115	Receive Square D Final Vendor Drawings - Wiring Diagrams - M	15d	23-Jul-26 08:00	12-Aug-26 17:00	76d	Receive Square D Final Vendor Drawings - Wiring Diagrams - Medium Voltage System																																																			
UE171155-75	Address Client Comments & Update with Final Vendor info & Iss	14d	13-Aug-26 08:00	01-Sep-26 17:00	76d	Address Client Comments & Update with Final Vendor info & Issue IFC - --Medium Voltage System																																																			
00373.3.19.2.7.16 Schematics Diagrams - Low Voltage System																																																									
UE171157-125	Issue Preliminary Schematics to Square D - Low Voltage Syster	0d	06-Aug-25 08:00 A	25-Aug-25 17:00 A		Issue Preliminary Schematics to Square D - Low Voltage System																																																			
UE171157-10	Receive Square D vendor Information - Schematic Diagrams - I	0d	26-Aug-25 08:00 A	05-Dec-25 17:00 A		Receive Square D vendor Information - Schematic Diagrams - Low Voltage System																																																			
UE171157-105	Adress IDR Comments & Issue for CR - Low Voltage System	0d	20-Feb-26 08:00 A	20-Feb-26 17:00 A		Address IDR Comments & Issue for CR - Low Voltage System																																																			
UE171157-95	IDR - Low Voltage System	0d	20-Feb-26 08:00 A	20-Feb-26 17:00 A		IDR - Low Voltage System																																																			
UE171157-05	Prepare Schematic Diagrams & Issue for CR - Low Voltage Syst	24d	31-Aug-26 08:00	02-Oct-26 17:00	165d	Prepare Schematic Diagrams & Issue for CR - Low Voltage System																																																			
UE171157-20	Client Review - & Schematic Diagrams - Low Voltage System	15d	05-Oct-26 08:00	23-Oct-26 17:00	165d	Client Review - & Schematic Diagrams - Low Voltage System																																																			
UE171157-25	Address Client Comments & Update with Final Vendor info & Iss	10d	26-Oct-26 08:00	06-Nov-26 17:00	165d	Address Client Comments & Update with Final Vendor info & Issue IFC - Schematics - Low Vo																																																			
00373.3.19.2.7.25 Wiring Diagrams - Low Voltage System																																																									
UE171157-85	Prepare Wiring Diagrams - Low Voltage System	30d	07-May-26 08:00*	18-Jun-26 17:00	66d	Prepare Wiring Diagrams - Low Voltage System																																																			
UE171157-45	Receive vendor Information - Wiring Diagrams - Low Voltage Sy	10d	19-Jun-26 08:00	02-Jul-26 17:00	121d	Receive vendor Information - Wiring Diagrams - Low Voltage System																																																			
UE171157-55	Incorporate information & Issue for CR - Wiring Diagrams - Low	20d	06-Jul-26 08:00	31-Jul-26 17:00	121d	Incorporate information & Issue for CR - Wiring Diagrams - Low Voltage System																																																			
UE171157-65	Client Review - Wiring Diagrams - Low Voltage System	15d	03-Aug-26 08:00	21-Aug-26 17:00	121d	Client Review - Wiring Diagrams - Low Voltage System																																																			
UE171157-75	Address Client Comments & Update with Final Vendor info & Iss	10d	24-Aug-26 08:00	04-Sep-26 17:00	121d	Address Client Comments & Update with Final Vendor info & Issue IFC - Wiring Diagrams Low Volta																																																			
00373.3.19.2.7.17 Schematics & Wiring Diagrams - DC & UPS System																																																									
UE171161-05	Prepare Schematic Diagrams - DC & UPS System	30d	07-May-26 08:00	18-Jun-26 17:00	66d	Prepare Schematic Diagrams - DC & UPS System																																																			
UE171161-10	Receive vendor Information - Schematic Diagrams - DC & UPS	10d	19-Jun-26 08:00	02-Jul-26 17:00	66d	Receive vendor Information - Schematic Diagrams - DC & UPS System																																																			
UE171161-15	Incorporate information & Issue for CR - Schematic Diagrams -	20d	06-Jul-26 08:00	31-Jul-26 17:00	66d	Incorporate information & Issue for CR - Schematic Diagrams - DC & UPS System																																																			
UE171161-20	Client Review - Schematic Diagrams - DC & UPS System	15d	03-Aug-26 08:00	21-Aug-26 17:00	125d	Client Review - Schematic Diagrams - DC & UPS System																																																			

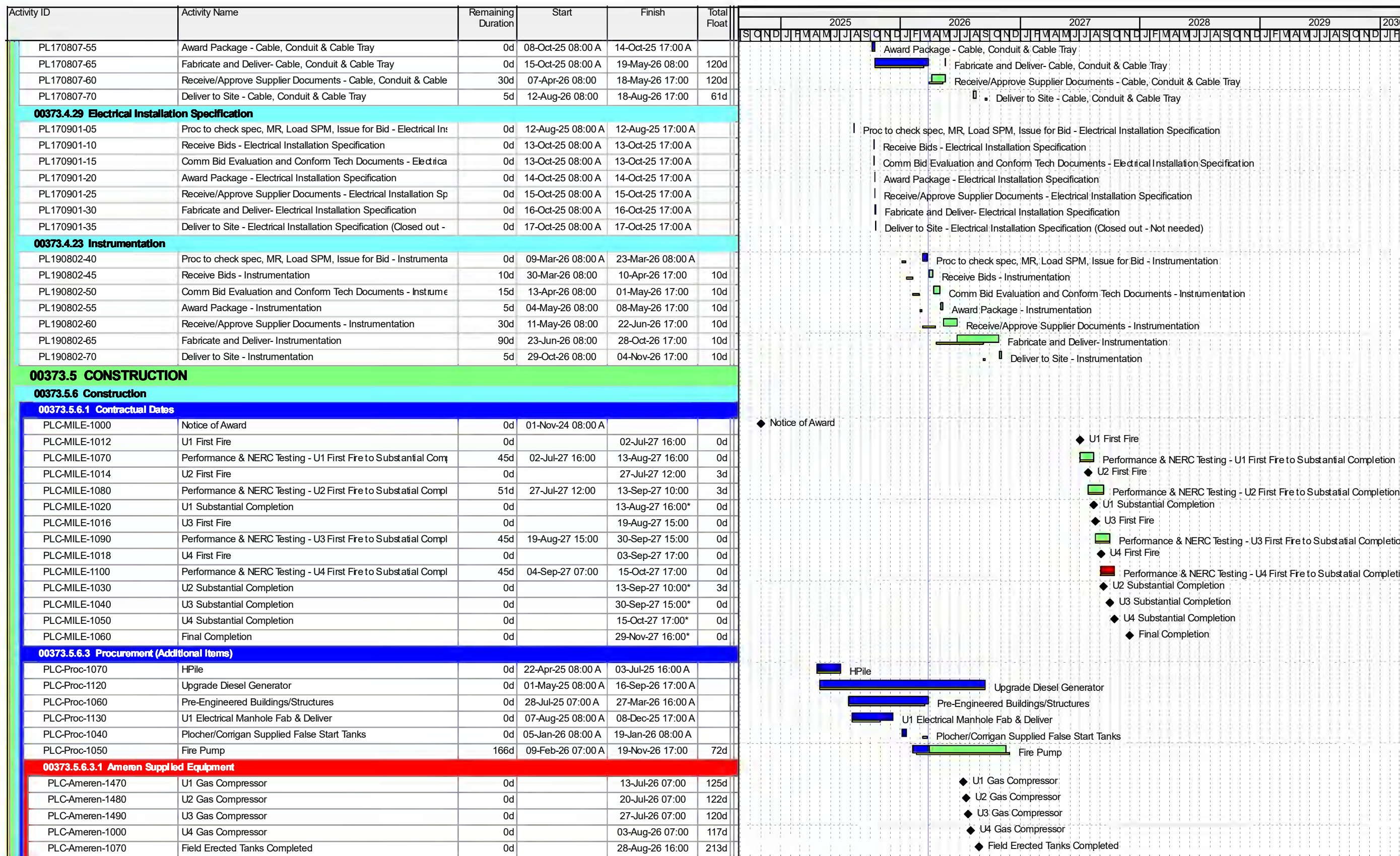
█ Remaining Level of Effort █ Actual Work ◆ Milestone
█ Actual Level of Effort █ Remaining Work
█ Primary Baseline █ Critical Remaining Work

Activity ID	Activity Name	Remaining Duration	Start	Finish	Total Float	Gantt Chart (2025-2030)																											
						2025	2026	2027	2028	2029	2030																						
UE191102-25	Address Client Comments and Issue Control System Descripor	5d	16-Apr-26 08:00	22-Apr-26 17:00	4d	Gantt bar for 16-Apr-26 08:00 to 22-Apr-26 17:00																											
00373.3.19.6.7 DCS Hardware I/O List																																	
UE190703-05	Develop DCS Hardware I/O List & Issue for CR	7d	12-Jan-26 08:00 A	07-Apr-26 17:00	5d	Gantt bar for 12-Jan-26 08:00 A to 07-Apr-26 17:00																											
UE190703-10	IDR - DCS Hardware I/O List	0d	03-Feb-26 08:00 A	03-Feb-26 17:00 A		Gantt bar for 03-Feb-26 08:00 A to 03-Feb-26 17:00 A																											
UE190703-15	Address Comments and issue for CR - DCS Hardware I/O List	0d	06-Feb-26 08:00 A	06-Feb-26 17:00 A		Gantt bar for 06-Feb-26 08:00 A to 06-Feb-26 17:00 A																											
UE190703-20	Client Review - DCS Hardware I/O List	5d	08-Apr-26 08:00	14-Apr-26 17:00	5d	Gantt bar for 08-Apr-26 08:00 to 14-Apr-26 17:00																											
UE190703-25	Address Client Comments and Finalize - DCS Hardware I/O List	5d	15-Apr-26 08:00	21-Apr-26 17:00	5d	Gantt bar for 15-Apr-26 08:00 to 21-Apr-26 17:00																											
00373.3.19.6.8 BOP HMI Graphic Screens																																	
UE191105-05	Prep, Check & Issue for IDR BOP HMI Graphic Screens	0d	30-May-25 08:00 A	17-Mar-26 17:00 A		Gantt bar for 30-May-25 08:00 A to 17-Mar-26 17:00 A																											
UE191105-10	IDR I&C Drawings - BOP HMI Graphic Screens	0d	18-Mar-26 08:00 A	24-Mar-26 17:00 A		Gantt bar for 18-Mar-26 08:00 A to 24-Mar-26 17:00 A																											
UE191105-15	Address Comments and issue for CR - BOP HMI Graphic Scre	0d	25-Mar-26 08:00 A	01-Apr-26 17:00 A		Gantt bar for 25-Mar-26 08:00 A to 01-Apr-26 17:00 A																											
UE191105-20	Client Review - BOP HMI Graphic Screens	13d	02-Apr-26 08:00 A	15-Apr-26 17:00	4d	Gantt bar for 02-Apr-26 08:00 A to 15-Apr-26 17:00																											
UE191105-25	Address Client Comments and Issue Final - BOP HMI Graphic	5d	16-Apr-26 08:00	22-Apr-26 17:00	4d	Gantt bar for 16-Apr-26 08:00 to 22-Apr-26 17:00																											
00373.3.19.6.10 Alarm List																																	
UE191106-05	Prep, Check & Issue - Preliminary Alarm List	10d	27-Apr-26 08:00	08-May-26 17:00	164d	Gantt bar for 27-Apr-26 08:00 to 08-May-26 17:00																											
UE191106-10	IDR I&C Drawings - Preliminary Alarm List	5d	11-May-26 08:00	15-May-26 17:00	164d	Gantt bar for 11-May-26 08:00 to 15-May-26 17:00																											
UE191106-15	Address Comments and issue for CR - Preliminary Alarm List	10d	18-May-26 08:00	01-Jun-26 17:00	164d	Gantt bar for 18-May-26 08:00 to 01-Jun-26 17:00																											
UE191106-20	Client Review - Preliminary Alarm List	15d	02-Jun-26 08:00	22-Jun-26 17:00	164d	Gantt bar for 02-Jun-26 08:00 to 22-Jun-26 17:00																											
UE191106-25	Address Client Comments and Issue Final - Preliminary Alarm Li	10d	23-Jun-26 08:00	07-Jul-26 17:00	164d	Gantt bar for 23-Jun-26 08:00 to 07-Jul-26 17:00																											
00373.3.19.6.13 Network Drawings																																	
UE191106-35	Prep, Check & Issue for IDR - Network Drawings	10d	18-May-26 08:00*	01-Jun-26 17:00	157d	Gantt bar for 18-May-26 08:00* to 01-Jun-26 17:00																											
UE191106-45	IDR - Network Drawings	5d	02-Jun-26 08:00	08-Jun-26 17:00	157d	Gantt bar for 02-Jun-26 08:00 to 08-Jun-26 17:00																											
UE191106-55	Address Comments and issue for CR - Network Drawings	10d	09-Jun-26 08:00	22-Jun-26 17:00	157d	Gantt bar for 09-Jun-26 08:00 to 22-Jun-26 17:00																											
UE191106-65	Client Review - Network Drawings	15d	23-Jun-26 08:00	14-Jul-26 17:00	157d	Gantt bar for 23-Jun-26 08:00 to 14-Jul-26 17:00																											
UE191106-75	Address Client Comments and Issue Final - Network Drawings	10d	15-Jul-26 08:00	28-Jul-26 17:00	157d	Gantt bar for 15-Jul-26 08:00 to 28-Jul-26 17:00																											
00373.3.19.6.9 I/O Datalink																																	
UE191109-35	Receive I/O Datalink Vendor Information	0d	10-Nov-25 08:00 A	04-Mar-26 17:00 A		Gantt bar for 10-Nov-25 08:00 A to 04-Mar-26 17:00 A																											
UE191109-05	Prep, Check & Issue for CR - I/O Datalink	0d	12-Jan-26 08:00 A	17-Mar-26 17:00 A		Gantt bar for 12-Jan-26 08:00 A to 17-Mar-26 17:00 A																											
UE191109-10	IDR - I/O Datalink	0d	03-Feb-26 08:00 A	03-Feb-26 17:00 A		Gantt bar for 03-Feb-26 08:00 A to 03-Feb-26 17:00 A																											
UE191109-15	Address Comments and issue for CR I & C - I/O Datalink	0d	03-Feb-26 08:00 A	03-Feb-26 17:00 A		Gantt bar for 03-Feb-26 08:00 A to 03-Feb-26 17:00 A																											
UE191109-20	Client Review I&C Drawings - I/O Datalink	7d	18-Mar-26 08:00 A	07-Apr-26 17:00	5d	Gantt bar for 18-Mar-26 08:00 A to 07-Apr-26 17:00																											
UE191109-25	Address Client Comments and Issue AFC - I/O Datalink	10d	08-Apr-26 08:00	21-Apr-26 17:00	5d	Gantt bar for 08-Apr-26 08:00 to 21-Apr-26 17:00																											
00373.3.19.7 Architecture																																	
00373.3.19.7.7 Specification																																	
00373.3.19.7.7.5 Buildings																																	
00373.3.19.7.7.5.8 General																																	
UE180803-05	Prep, Check, and Issue IDR Architectural Specifications - Buildin	0d	13-Jan-25 08:00 A	27-Mar-25 17:00 A		Gantt bar for 13-Jan-25 08:00 A to 27-Mar-25 17:00 A																											
UE180803-10	IDR Architectural Specifications - Buildings	0d	27-Mar-25 08:00 A	11-Apr-25 00:00 A		Gantt bar for 27-Mar-25 08:00 A to 11-Apr-25 00:00 A																											
UE180803-15	Address IDR Comments & Issue for Client Review Architectural :	0d	14-Apr-25 08:00 A	17-Apr-25 17:00 A		Gantt bar for 14-Apr-25 08:00 A to 17-Apr-25 17:00 A																											
UE180803-20	Client Review Architectural Specifications - Buildings	0d	21-Apr-25 08:00 A	09-May-25 17:00 A		Gantt bar for 21-Apr-25 08:00 A to 09-May-25 17:00 A																											
UE180803-25	Address Client Comments & Issue for IFC Architectural Specific	0d	12-May-25 08:00 A	19-May-25 17:00 A		Gantt bar for 12-May-25 08:00 A to 19-May-25 17:00 A																											
00373.3.19.7.1 Architectural Drawings																																	
00373.3.19.7.1.1 Fuel Forwarding Pump Enclosure																																	
UE181102-05	Prep, Check, and Issue IDR Architectural Plan/Elev/Sections/Dtl'	0d	06-Mar-25 08:00 A	16-Apr-25 17:00 A		Gantt bar for 06-Mar-25 08:00 A to 16-Apr-25 17:00 A																											
UE181102-10	IDR Architectural Plan/Elev/Sections/Dtl's - Liquid Fuel Pump En	0d	17-Apr-25 08:00 A	05-May-25 17:00 A		Gantt bar for 17-Apr-25 08:00 A to 05-May-25 17:00 A																											
UE181102-15	Address Comments and Issue for CRArchitectural Plan/Elev/Se	0d	06-May-25 08:00 A	13-Jun-25 17:00 A		Gantt bar for 06-May-25 08:00 A to 13-Jun-25 17:00 A																											
UE181102-20	Client Review Architectural Plan/Elev/Sections/Dtl's - Liquid Fuel	0d	16-Jun-25 08:00 A	03-Jul-25 17:00 A		Gantt bar for 16-Jun-25 08:00 A to 03-Jul-25 17:00 A																											
UE181102-25	Address Client Comments and Issue for Use Architectural Plan/I	0d	07-Jul-25 08:00 A	22-Jul-25 17:00 A		Gantt bar for 07-Jul-25 08:00 A to 22-Jul-25 17:00 A																											
00373.3.19.7.1.2 Plant Services Enclosure																																	
UE181103-05	Prep, Check, and Issue IDR Architectural Plan/Elev/Sections/Dtl'	0d	24-Mar-25 08:00 A	16-Apr-25 17:00 A		Gantt bar for 24-Mar-25 08:00 A to 16-Apr-25 17:00 A																											



Activity ID	Activity Name	Remaining Duration	Start	Finish	Total Float	2025 2026 2027 2028 2029 2030																																																																	
						2025												2026												2027												2028												2029												2030					
PL150810-40	Proc to check spec, MR, Load SPM, Issue for Bid - Fuel Gas Va	0d	07-Jul-25 08:00 A	18-Jul-25 17:00 A		Proc to check spec, MR, Load SPM, Issue for Bid - Fuel Gas Valves																																																																	
PL150810-45	Receive Bids - Fuel Gas Valves	0d	21-Jul-25 08:00 A	08-Aug-25 17:00 A		Receive Bids - Fuel Gas Valves																																																																	
PL150810-50	Comm Bid Evaluation and Conform Tech Documents - Fuel Gas	0d	18-Aug-25 08:00 A	08-Sep-25 17:00 A		Comm Bid Evaluation and Conform Tech Documents - Fuel Gas Valves																																																																	
PL150810-55	Award Package - Fuel Gas Valves C	0d	09-Sep-25 08:00 A	15-Sep-25 17:00 A		Award Package - Fuel Gas Valves C																																																																	
PL150810-60	Receive/Approve Supplier Documents - Fuel Gas Valves	0d	16-Sep-25 08:00 A	18-Mar-26 17:00 A		Receive/Approve Supplier Documents - Fuel Gas Valves																																																																	
PL150810-65	Fabricate and Deliver- Fuel Gas Valves	162d	25-Mar-26 08:00 A	20-Nov-26 17:00	252d	Fabricate and Deliver- Fuel Gas Valves																																																																	
PL150810-70	Deliver to Site - Fuel Gas Valves	5d	23-Nov-26 08:00	01-Dec-26 17:00	252d	Deliver to Site - Fuel Gas Valves																																																																	
00373.4.9 Shop Fabricated Tanks																																																																							
PL150806-40	Proc to check spec, MR, Load SPM, Issue for Bid - Shop Fabric	0d	04-Aug-25 08:00 A	15-Aug-25 17:00 A		Proc to check spec, MR, Load SPM, Issue for Bid - Shop Fabricated Tanks																																																																	
PL150806-45	Receive Bids - Shop Fabricated Tanks	0d	18-Aug-25 08:00 A	18-Aug-25 17:00 A		Receive Bids - Shop Fabricated Tanks																																																																	
PL150806-50	Comm Bid Evaluation and Conform Tech Documents - Shop Fa	0d	19-Aug-25 08:00 A	19-Aug-25 17:00 A		Comm Bid Evaluation and Conform Tech Documents - Shop Fabricated Tanks																																																																	
PL150806-55	Award Package - Shop Fabricated Tanks C	0d	21-Aug-25 08:00 A	21-Aug-25 17:00 A		Award Package - Shop Fabricated Tanks C																																																																	
PL150806-60	Receive/Approve Supplier Documents - Shop Fabricated Tanks	0d	25-Sep-25 08:00 A	06-Nov-25 17:00 A		Receive/Approve Supplier Documents - Shop Fabricated Tanks																																																																	
PL150806-65	Fabricate and Deliver- Shop Fabricated Tanks	45d	10-Nov-25 08:00 A	01-Jun-26 17:00	174d	Fabricate and Deliver- Shop Fabricated Tanks																																																																	
PL150806-70	Deliver to Site - Shop Fabricated Tanks	5d	02-Jun-26 08:00	08-Jun-26 17:00	174d	Deliver to Site - Shop Fabricated Tanks																																																																	
00373.4.36 Knockout Drums																																																																							
PL150806-80	Receive/Approve Supplier Documents - Knockout Drums	25d	02-Mar-26 08:00 A	01-May-26 17:00	41d	Receive/Approve Supplier Documents - Knockout Drums																																																																	
PL150806-90	Fabricate and Deliver- Knockout Drums	118d	04-May-26 08:00	19-Oct-26 17:00	76d	Fabricate and Deliver- Knockout Drums																																																																	
PL150806-100	Deliver to Site - Knockout Drums	5d	20-Oct-26 08:00	26-Oct-26 17:00	76d	Deliver to Site - Knockout Drums																																																																	
00373.4.28 Safety Shower																																																																							
PL150809-05	Proc to check spec, MR, Load SPM, Issue for Bid - Safety Sho	0d	19-Jan-26 08:00 A	19-Jan-26 08:00 A		Proc to check spec, MR, Load SPM, Issue for Bid - Safety Showers																																																																	
PL150809-10	Receive Bids - Safety Showers	0d	19-Jan-26 08:00 A	04-Feb-26 17:00 A		Receive Bids - Safety Showers																																																																	
PL150809-15	Comm Bid Evaluation and Conform Tech Documents - Safety S	0d	09-Feb-26 08:00 A	12-Feb-26 17:00 A		Comm Bid Evaluation and Conform Tech Documents - Safety Showers																																																																	
PL150809-20	Award Package - Safety Showers	0d	13-Feb-26 08:00 A	13-Feb-26 17:00 A		Award Package - Safety Showers																																																																	
PL150809-25	Receive/Approve Supplier Documents - Safety Shower	0d	16-Feb-26 08:00 A	05-Mar-26 17:00 A		Receive/Approve Supplier Documents - Safety Shower																																																																	
PL150809-30	Fabricate and Deliver- Safety Shower	99d	06-Mar-26 08:00 A	17-Aug-26 17:00	138d	Fabricate and Deliver- Safety Shower																																																																	
PL150809-35	Deliver to Site - Safety Showers	5d	18-Aug-26 08:00	24-Aug-26 17:00	138d	Deliver to Site - Safety Showers																																																																	
00373.4.31 Lift Station																																																																							
PL150812-35	Proc to check spec, MR, Load SPM, Issue for Bid - Lift Station	0d	22-Sep-25 08:00 A	23-Sep-25 17:00 A		Proc to check spec, MR, Load SPM, Issue for Bid - Lift Station																																																																	
PL150812-40	Receive Bids - Sanitary Lift Station	0d	24-Sep-25 08:00 A	26-Sep-25 17:00 A		Receive Bids - Sanitary Lift Station																																																																	
PL150812-45	Comm Bid Evaluation and Conform Tech Documents - Lift Stati	0d	26-Sep-25 08:00 A	29-Sep-25 17:00 A		Comm Bid Evaluation and Conform Tech Documents - Lift Station																																																																	
PL150812-50	Award Package - Lift Station	0d	28-Oct-25 08:00 A	31-Oct-25 17:00 A		Award Package - Lift Station																																																																	
PL150812-55	Receive/Approve Supplier Documents - Lift Station	0d	24-Nov-25 08:00 A	16-Jan-26 17:00 A		Receive/Approve Supplier Documents - Lift Station																																																																	
PL150812-60	Fabricate and Deliver- Lift Station	0d	19-Jan-26 08:00 A	31-Mar-26 17:00 A		Fabricate and Deliver- Lift Station																																																																	
PL150812-65	Deliver to Site - Lift Station	7d	01-Apr-26 08:00 A	07-Apr-26 17:00	193d	Deliver to Site - Lift Station																																																																	
00373.4.18 Piping Material Specifications																																																																							
PL160801-40	Proc to check spec, MR, Load SPM, Issue for Bid - Pipe Materi	0d	13-Oct-25 08:00 A	24-Oct-25 17:00 A		Proc to check spec, MR, Load SPM, Issue for Bid - Pipe Material																																																																	
PL160801-45	Receive Bids - Pipe Material	0d	24-Oct-25 08:00 A	07-Nov-25 17:00 A		Receive Bids - Pipe Material																																																																	
PL160801-50	Comm Bid Evaluation and Conform Tech Documents - Pipe Ma	0d	17-Nov-25 08:00 A	17-Nov-25 17:00 A		Comm Bid Evaluation and Conform Tech Documents - Pipe Material																																																																	
PL160801-55	Award Package - Pipe Material	0d	17-Nov-25 08:00 A	21-Nov-25 17:00 A		Award Package - Pipe Material																																																																	
PL160801-60	Receive/Approve Supplier Documents - Pipe Material	0d	24-Nov-25 08:00 A	01-Dec-25 17:00 A		Receive/Approve Supplier Documents - Pipe Material																																																																	
PL160801-65	Fabricate and Deliver- Pipe Material	0d	02-Dec-25 08:00 A	13-Feb-26 17:00 A		Fabricate and Deliver- Pipe Material																																																																	
PL160801-70	Deliver to Site - Pipe Material	5d	24-Jun-26 08:00	30-Jun-26 17:00	95d	Deliver to Site - Pipe Material																																																																	
00373.4.16 Piping Specification - HDPE U/G Demineralized Water																																																																							
PL160803-40	Proc to check spec, MR, Load SPM, Issue for Bid - HDPE U/G I	0d	13-Oct-25 08:00 A	24-Oct-25 17:00 A		Proc to check spec, MR, Load SPM, Issue for Bid - HDPE U/G Demineralized Water Pipe																																																																	
PL160803-45	Receive Bids - CHDPE U/G Demineralized Water Pipe	0d	24-Oct-25 08:00 A	07-Nov-25 17:00 A		Receive Bids - CHDPE U/G Demineralized Water Pipe																																																																	
PL160803-50	Comm Bid Evaluation and Conform Tech Documents - HDPE U	0d	17-Nov-25 08:00 A	17-Nov-25 17:00 A		Comm Bid Evaluation and Conform Tech Documents - HDPE U/G Demineralized Water Pipe																																																																	
PL160803-55	Award Package - HDPE U/G Demineralized Water Pipe	0d	18-Nov-25 08:00 A	21-Nov-25 17:00 A		Award Package - HDPE U/G Demineralized Water Pipe																																																																	
PL160803-60	Receive/Approve Supplier Documents - HDPE U/G Demineraliz	0d	24-Nov-25 08:00 A	30-Dec-25 17:00 A		Receive/Approve Supplier Documents - HDPE U/G Demineralized Water Pipe																																																																	
PL160803-65	Fabricate and Deliver- HDPE U/G Demineralized Water Pipe	0d	31-Dec-25 08:00 A	13-Feb-26 17:00 A		Fabricate and Deliver- HDPE U/G Demineralized Water Pipe																																																																	





■ Remaining Level of Effort ■ Actual Work ◆ Milestone
■ Actual Level of Effort ■ Remaining Work
■ Primary Baseline ■ Critical Remaining Work

Activity ID	Activity Name	Remaining Duration	Start	Finish	Total Float
PLU1-CG1-MBS-1300	CTG1 Filter House - Inlet Duct Filter House to CT- Remove	1d	31-Aug-26 12:00	02-Sep-26 10:00	0d
PLU1-CG1-MBS-1310	CTG1 Rough Set Turning Gear	3d	02-Sep-26 10:00	04-Sep-26 14:00	0d
PLU1-CG1-MBS-1320	CTG1 Install Accessory Module Exhaust Fans	2d	04-Sep-26 14:00	08-Sep-26 10:00	0d
PLU1-CG1-MBS-1330	CTG1 Set water Mist Skid	1d	08-Sep-26 10:00	09-Sep-26 08:00	0d
PLU1-CG1-MBS-1350	CTG1 Set Inlet Plenum Upper Half	2d	08-Sep-26 16:00	09-Sep-26 16:00	0d
PLU1-CG1-MBS-1340	CTG1 Install Transformers/Reactors	10d	08-Sep-26 10:00	18-Sep-26 10:00	0d
PLU1-CG1-MBS-1360	CTG1 Set Fuel Gas Scrubber	1d	09-Sep-26 16:00	10-Sep-26 14:00	0d
PLU1-CG1-MBS-1370	CTG1 Set Fuel Gas Scrubber Drain Tank	1d	09-Sep-26 16:00	10-Sep-26 14:00	0d
PLU1-CG1-MBS-1380	CTG1 Set CTG1 Stair Tower & Fill in Steel CID	3d	10-Sep-26 14:00	15-Sep-26 08:00	0d
PLU1-CG1-MBS-1390	CTG1 Set/Install Fuel Gas Electric Start-up Heater	2d	15-Sep-26 08:00	16-Sep-26 14:00	0d
PLU1-CG1-MBS-1410	CTG1 Install Load Compartment	5d	16-Sep-26 14:00	22-Sep-26 14:00	0d
PLU1-CG1-MBS-1400	CTG1 Seal weld outside exhaust Diffuser	15d	16-Sep-26 14:00	02-Oct-26 14:00	0d
PLU1-CG1-MBS-1420	CTG1 Install Lower Half Turbine Enclosure	10d	22-Sep-26 14:00	02-Oct-26 14:00	0d
PLU1-CG1-MBS-1430	CTG1 Detail CTG1 Building Stair Tower CID	10d	22-Sep-26 14:00	02-Oct-26 14:00	0d
PLU1-CG1-MBS-1450	CTG1 Install Inlet Duct - Silencer to Transition	1d	02-Oct-26 14:00	05-Oct-26 12:00	0d
PLU1-CG1-MBS-1440	CTG1 Final Set Fuel Gas Electric Start-up Heater	2d	02-Oct-26 14:00	06-Oct-26 10:00	0d
PLU1-CG1-MBS-1460	CTG1 Install Upper Half Turbine Enclosure	5d	05-Oct-26 12:00	09-Oct-26 12:00	0d
PLU1-CG1-MBS-1480	CTG1 Install Generator Output Termination Assembly	10d	09-Oct-26 12:00	21-Oct-26 12:00	0d
PLU1-CG1-MBS-1470	CTG1 Install Inlet Duct -Detail Duct to Support Steel	15d	09-Oct-26 12:00	27-Oct-26 12:00	0d
PLU1-CG1-MBS-1490	CTG1 Install Inside turbine Enclosure Platforms	3d	21-Oct-26 12:00	23-Oct-26 16:00	0d
PLU1-CG1-MBS-1500	CTG1 Install Turbine Enclosure Roof	5d	23-Oct-26 16:00	29-Oct-26 16:00	0d
PLU1-CG1-MBS-1510	CTG1 Install Turbine Enclosure Roof Cooling Fans	2d	29-Oct-26 16:00	02-Nov-26 12:00	0d
PLU1-CG1-MBS-1530	CTG1 Install Filter House Support Steel	4d	02-Nov-26 12:00	05-Nov-26 14:00	0d
PLU1-CG1-MBS-1520	CTG1 Install Outside Turbine Enclosure Platforms	10d	02-Nov-26 12:00	12-Nov-26 12:00	0d
PLU1-CG1-MBS-1540	CTG1 Install Guide Keys	5d	05-Nov-26 14:00	11-Nov-26 14:00	0d
PLU1-CG1-MBS-1550	CTG1 Pre Assemble Filter House Transition Assembly	10d	11-Nov-26 14:00	23-Nov-26 14:00	0d
PLU1-CG1-MBS-1560	CTG1 Install Support Steel and Grating for Electrical PECC Bldg	10d	23-Nov-26 14:00	04-Dec-26 14:00	0d
PLU1-CG1-MBS-1590	CTG1 Install Inlet Duct - Set Filter House Transition Assembly	2d	04-Dec-26 10:00	08-Dec-26 10:00	0d
PLU1-CG1-MBS-1600	CTG1 Install Support Steel and Grating for Accessory Module	10d	08-Dec-26 10:00	18-Dec-26 10:00	0d
PLU1-CG1-MBS-1630	CTG1 Weld Studs on Diffuser for Insulation	10d	18-Dec-26 10:00	04-Jan-27 10:00	8d
PLU1-CG1-MBS-1610	CTG1 Pre Assemble Lower sections for Pulse Filter Modules	15d	18-Dec-26 10:00	08-Jan-27 10:00	0d
PLU1-CG1-MBS-1620	CTG1 Weld Inlet Duct to Support Steel	18d	18-Dec-26 10:00	12-Jan-27 14:00	0d
PLU1-CG1-MBS-1640	CTG1 Set Evap Cooler Modules	2d	04-Jan-27 10:00	05-Jan-27 16:00	8d
PLU1-CG1-MBS-1790	Install Duct Silencers Stack	11d	04-Jan-27 10:00	06-Jan-27 10:00	11d
PLU1-CG1-MBS-1650	CTG1 Set Evap Cooler Sumps	1d	05-Jan-27 16:00	06-Jan-27 14:00	8d
PLU1-CG1-MBS-1800	Install Duct Silencers Inlet Duct	2d	12-Jan-27 14:00	14-Jan-27 14:00	0d
PLU1-CG1-MBS-1660	CTG1 Set Pulse Filter Modules	5d	14-Jan-27 14:00	20-Jan-27 14:00	0d
PLU1-CG1-MBS-1670	CTG1 Install Remaining Steel and Grating Exterior CT	10d	20-Jan-27 14:00	01-Feb-27 14:00	0d
PLU1-CG1-MBS-1680	CTG1 Bolt up & Caulk Modules	15d	20-Jan-27 14:00	05-Feb-27 14:00	0d
PLU1-CG1-MBS-1690	CTG1 Install Insulation & Liner Plate Inside AFT Diffuser	15d	25-Jan-27 16:00	10-Feb-27 16:00	0d
PLU1-CG1-MBS-1700	CTG1 Walkdown/Punch List	8d	10-Feb-27 16:00	22-Feb-27 10:00	0d
PLU1-CG1-MBS-1710	CTG1 Caulk & Detail Filter House Internal	20d	10-Feb-27 16:00	05-Mar-27 16:00	5d
PLU1-CG1-MBS-1720	CTG1 Final Align Turbine/Generator	8d	22-Feb-27 10:00	02-Mar-27 14:00	0d
PLU1-CG1-MBS-1780	CTG1 Final Clean Inlet Filter House	15d	22-Feb-27 10:00	10-Mar-27 10:00	91d
PLU1-CG1-MBS-1730	CTG1 Final Torque Load Coupling Bolts	2d	02-Mar-27 14:00	04-Mar-27 10:00	0d
PLU1-CG1-MBS-1740	CTG1 Final Align Turning Gear	3d	04-Mar-27 10:00	08-Mar-27 14:00	0d
PLU1-CG1-MBS-1750	CTG1 Gout Turbine	4d	08-Mar-27 14:00	11-Mar-27 16:00	0d
PLU1-CG1-MBS-1770	CTG1 Lube Oil Foundation Floor, Piers, & Sides to top of wall -	5d	08-Mar-27 14:00	12-Mar-27 14:00	88d
PLU1-CG1-MBS-1760	CTG1 Complete for Turnover	0d	11-Mar-27 16:00	11-Mar-27 16:00	0d
PLU1-CG1-MBS-1810	CTG1 Install Media	10d	12-Mar-27 14:00	24-Mar-27 14:00	88d

■ Remaining Level of Effort
■ Actual Work
■ Remaining Work
■ Critical Remaining Work
■ Primary Baseline
■ Actual Level of Effort
■ Remaining Work
■ Critical Remaining Work
◆ Milestone

