

EXHIBIT D

DARDENNE EXCHANGE

Section 1: Business Services

Section 2: Local Number Porting Report (NP)

Exhibit D
Section 1: Business Services


[Home](#) | [Locations](#) | [About Us](#) | [Charter Business](#)
[Products & Services](#)
[Small Business](#)
[Medium Business](#)
[Large Business](#)
[Solutions By Industry](#)
[Channel Partners](#)

Products and Services

[Business Bundle](#)
[High-Speed Internet](#)
[Data Networking](#)

Telephone

- [Telephone Local](#)
- [Telephone Long Distance](#)
- [Telephone Features](#)

[Video](#)
[Music](#)
[Request Product Information](#)


Charter Business™ Channel Partnerships

Grow your Business by becoming a Charter Business Agent or Reseller

\$99.99
per month

High-Speed Internet & Telephone or High-Speed Internet & Cable TV.
Hurry, offer expires soon.

Charter Business™ Telephone



Telephone Designed with the Needs of Small Businesses in Mind

Charter Business™ Telephone is a reliable and cost-effective choice for small businesses. A Charter Business representative can help you select the feature package that gives your small business the functionality it requires, without extras and add-ons you don't need. We also offer flexible packages that can help you save by giving you only the minutes you need.



Click Here to contact a Charter Business Account Representative

It's easy to switch.

We understand that keeping in touch with your customers is a top priority. That's why we make it easy to switch to Charter Business Telephone. We'll transfer your existing number* and telephone equipment when you switch to Charter Business Telephone.

It's easy to save.

Not only is Charter Business™ Telephone cost-effective because you can select the features you need, it also saves you time and money when you bundle it with your other Charter Business services. All on one convenient bill. The [Charter Business Bundle®](#)

For additional information about Charter Business™ Telephone, please click one of the links below:

[Telephone Local Packages](#) — Calling packages with the right features for small businesses.

[Telephone Long Distance](#) — Low per-minute rates and minute packages that let you pay only for the minutes you need.

[Telephone Features](#) — Customize your own feature package or learn more about what's included.

[Charter Business Bundle®](#) — Combine data, telephone, and/or video services for even more convenience and savings.



INTRODUCING CHARTER BUSINESS™ TELEPHONE

Now there's a new choice for
local telephone service with the
right features at the right price.

✓ **The features and functionality you need:**

Business lines for small businesses with a choice of affordable long distance plans and popular calling features* such as Caller ID, Call Waiting, 3-Way Calling, Speed Dial 30, Call Forwarding, Voice Mail and many more!

✓ **Easy to switch, easy to save:**

Keep your same phone number.† Plus, ask how you can save** with the **Charter Business Bundle™** when you combine telephone with Internet and/or video service from **Charter Business™**

Call today and see how Charter Business can connect
your business to success with a better choice.

Call 866-974-5047 www.Charter-Business.com

Charter
Business™

HIGH-SPEED INTERNET • VIDEO • TELEPHONE

©Charter Communications, 2007. All trademarks belong to their respective owners. Services not available in all areas. Restrictions may apply. Charter Business™ Telephone Service may not be compatible with certain model fax machines. Please call for complete details.
*Features are available for an additional monthly cost. Taxes and franchise, installation and other fees apply. Actual amount depending on location and services ordered. All services provided are subject to the terms and conditions of the business customer's subscriber agreement and subject to change. Call for details. **Savings are based on discounts off the Charter Business™ Internet and Video a la carte rates when you combine Charter Business Telephone with Internet and/or video. † Number portability available within the current rate center.



St. Charles County Business



- **Business Class Phone Service (Keep your number, free listing in Yellow Pages)**
Available Q2 2007

- Broadband cable modem Internet access ranging from 1.5 Mbps to 10 Mbps downstream and up to 2 Mbps upstream. Exceeds T-1

- Fiber based managed WAN solutions at OC-X or Gigabit Ethernet connectivity

- DNS & e-mail services

Facilities based provider – no third parties to deal with for support

- And of Course Cable Television Services to businesses of all sizes

Charter Business offers your business unique options for Internet and VPN solutions by leveraging a hybrid fiber optic and coaxial cable network. We provide our customers with customized fiber connectivity with a committed information rate to meet your needs at any given location. In addition Charter Business connects business locations and/or home office locations with coaxial cable delivering scalable data circuits ranging from 1.5Mbps up to a full 10Mbps. In delivering these solutions CBN provides a flexible, scalable, and customized IP design on a State of the Art facilities based Wide Area Network.

For additional information call:

Chris Knecht 866-462-7003
cknecht@chartercom.com

BUNDLE TWO OR MORE SERVICES AND SAVE!
CALL TO LEARN MORE



CONNECT TO SUCCESS

CHARTER BUSINESS™ TELEPHONE MISSOURI

LOCAL PACKAGES

SERVICE	FEATURES	RATE
Business Access Line	Unlimited local calling	MCA 0-2 \$34.99 per month per line*†† MCA 3-5 \$27.99 per month per line*††
Business Line	Unlimited local calling, Charter Business Basic Long Distance plan	MCA 0-2 \$29.99 per month per line*†† MCA 3-5 \$21.99 per month per line*††
Additional Business Line	Unlimited local calling, Charter Business Basic Long Distance plan	MCA 0-2 \$27.99 per month per line*†† MCA 3-5 \$19.99 per month per line*††
Business Enhanced Call Feature Package	Includes Caller ID, Call Waiting, Call Waiting with Caller ID, 3 Way Calling, Speed Dial 30, Anonymous Call Rejection, Call Forward Variable, Call Screening, Call Return, Repeat Dialing, Call Forward Selective, and Selective Call Acceptance.	\$15.99 per month per line*
Business Hunting Feature Package	Includes Caller ID and Hunt Group	\$5 per month per line

OTHER SERVICES

SERVICE	DESCRIPTION	RATE
Add/Change Feature	Add or remove a feature	\$10.00 per change (one charge per order)
Busy Line Interrupt	Operator assisted interruption on a busy line	\$20.00 per use
Busy Line Verify	Operator assisted verification of a busy line	\$20.00 per use
Directory Assistance	411 Operator assisted calls	\$0.75 per use
Directory Listing Change	Change existing Directory Listing	\$10.00
Additional Listing	Additional listing in White and Yellow pages	\$5.00 per month
Non-Listed Number	Number listed with Directory Assistance (411) but not in the directory	\$4.00 per month per telephone line
Non-Published Number	Number not listed with Directory Assistance (411) OR in the directory	\$5.00 per month per telephone line
Operator Services	Operator assisted calls	\$1.10 per use
Telephone Number Change	Change telephone number	\$20.00 per change
PIC Change	Change Toll carrier	\$5.00 per order
Seasonal Suspension	Allows account to remain active while suspending service for up to 3 consecutive months 1x per calendar year	\$10.00 per telephone line per month

FOR MORE INFORMATION, PLEASE CONTACT CHARTER BUSINESS™ CUSTOMER CARE AT 800-314-7195

TO ACCESS VOICE MAIL

1. Dial your business phone number, including area code.
2. You will hear your personal greeting.
3. While your greeting is playing, press the **[*]** key. **Note:** If you press **[*]** after the beep at the end of your greeting you will have to start over.
4. Enter your pass code followed by the **[#]** key.
5. Then follow the instructions and voice or how to listen to new messages, save or delete messages, replay messages, and so on.

Note: You can also dial **[*][9][9]** to access your voice mailbox from the office.**
Then follow the instructions above starting with number 2.

NMO 07/05

*Discounted rates may be available on a service term commitment basis. Fees and taxes may apply.

**Local alternate Voice Mail access number is not available in all area codes.

†Metro area calling plan additional.

††Price does not include per minute long distance usage fees.

Charter
Business™

LONG DISTANCE PACKAGES

SERVICE	FEATURES	RATE
Metro Calling Plan	Extend your local calling area to include all MCAs in St. Louis. Allow non-MCA customers to call you at no charge.	MCA 3 \$14.00 per month MCA 4 \$23.00 per month MCA 5 \$32.00 per month
Charter Business™ Basic Long Distance	Anytime minutes No peak or off-peak rates Anywhere minutes Interstate includes - Continental US and Canada (excluding Alaska and Hawaii) Intrastate includes - IntraLATA/local toll and InterLATA calls. NOTE: The per minute of use rates apply to 1+ calls only (i.e. direct dialed) and not 0+, within the Continental US).	\$0.07 per minute Interstate and Intrastate Maximize your domestic, direct dialed, long distance calls with Charter Business Long Distance that is billed in six second increments (i.e. 1+ calls and not 0+, within the Continental US).
Charter Business™ 300 Long Distance Package	300 Anytime minutes No peak or off-peak rates Anywhere minutes Interstate includes - Continental US and Canada (excluding Alaska and Hawaii). Intrastate includes - IntraLATA/local toll and InterLATA calls. NOTE: The per minute of use rates apply to 1+ calls only (i.e. direct dialed) and not 0+, 300 minutes included in the package are spread across all lines at a single service location.	\$14.99 per month (additional minutes over 300 at \$0.06 per minute) Maximize your domestic, direct dialed, long distance calls with Charter Business Long Distance that is billed in six second increments (i.e. 1+ calls and not 0+, within the Continental US).
Charter Business™ 600 Long Distance Package	600 Anytime minutes No peak or off-peak rates Anywhere minutes Interstate includes - Continental US and Canada (excluding Alaska and Hawaii). Intrastate includes - IntraLATA/local toll and InterLATA calls. NOTE: The per minute of use rates apply to 1+ calls only (i.e. direct dialed) and not 0+, 600 minutes included in the package are spread across all lines at a single service location.	\$26.99 per month (additional minutes over 600 at \$0.06 per minute) Maximize your domestic, direct dialed, long distance calls with Charter Business Long Distance that is billed in six second increments (i.e. 1+ calls and not 0+, within the Continental US).
Charter Business™ 1000 Long Distance Package	1000 Anytime minutes No peak or off-peak rates Anywhere minutes Interstate includes - Continental US and Canada (excluding Alaska and Hawaii). Intrastate includes - IntraLATA/local toll and InterLATA calls. NOTE: The per minute of use rates apply to 1+ calls only (i.e. direct dialed) and not 0+, 1000 minutes included in the package are spread across all lines at a single service location.	\$39.99 per month (additional minutes over 1000 at \$0.06 per minute) Maximize your domestic, direct dialed, long distance calls with Charter Business Long Distance that is billed in six second increments (i.e. 1+ calls and not 0+, within the Continental US).
Charter Business™ 2500 Long Distance Package	2500 Anytime minutes No peak or off-peak rates Anywhere minutes Interstate includes - Continental US and Canada (excluding Alaska and Hawaii). Intrastate includes - IntraLATA/local toll and InterLATA calls. NOTE: The per minute of use rates apply to 1+ calls only (i.e. direct dialed) and not 0+, 2500 minutes included in the package are spread across all lines at a single service location.	\$99.99 per month (additional minutes over 2500 at \$0.05 per minute) Maximize your domestic, direct dialed, long distance calls with Charter Business Long Distance that is billed in six second increments (i.e. 1+ calls and not 0+, within the Continental US).
Charter Business™ 5000 Long Distance Package	5000 Anytime minutes No peak or off-peak rates Anywhere minutes Interstate includes - Continental US and Canada (excluding Alaska and Hawaii). Intrastate includes - IntraLATA/local toll and InterLATA calls. NOTE: The per minute of use rates apply to 1+ calls only (i.e. direct dialed) and not 0+, 5000 minutes included in the package are spread across all lines at a single service location.	\$199.99 per month (additional minutes over 5000 at \$0.04 per minute) Maximize your domestic, direct dialed, long distance calls with Charter Business Long Distance that is billed in six second increments (i.e. 1+ calls and not 0+, within the Continental US).

© 2006 Charter Communications. All rights reserved. Not all services available in all areas. Other restrictions and limitations may apply. All information provided in this rate sheet is current as of July 26, 2006. Rates, services and terms are subject to change. Always contact Charter for verification of current rates, services, terms and conditions.

Charter 
Business™

BENEFIT	ACTIVATE	DEACTIVATE	RATE
Unidentified calls are handled automatically	*77	*87	\$2.00 MRC
Won't miss any incoming calls while on the phone	Service Change	Service Change	\$3.00 MRC
Won't miss any incoming calls while at the office or away	Service Change	Service Change	\$4.00 MRC
Can forward only wanted calls	*63	*83	\$4.00 MRC
Won't miss any incoming calls when away from the office	*72	*73	\$4.00 MRC
Can identify last missed call	*69	N/A	\$4.00 MRC (50¢ PU \$5.00 maximum charge per month when used PU)
Unwanted calls are handled automatically	*60	*80	\$5.00 MRC
Can obtain caller information for legal recourse	*57	N/A	\$20.00 PU
Won't miss any incoming calls	Flash Button	*70	\$7.00 MRC
Can decide whether to answer incoming call based on caller information	Service Change	Service Change	N/C
Can decide whether to answer incoming call based on caller information	Service Change	Service Change	\$8.00 MRC
Protect privacy	*67	*82	N/C
Prioritize and identify incoming calls	*61	*81	\$4.00 MRC
Can have a different phone number for other employees or give different numbers to different incoming callers without the expense of an additional line	Service Change	Service Change	\$4.00 MRC
Finds an available line within a set of lines	Service Change	Service Change	\$1.50 MRC
Don't have to manually redial busy numbers	*66	*86	\$4.00 MRC (50¢ PU \$5.00 maximum charge per month when used PU)
Only wanted calls are processed and unwanted calls are handled automatically	*64	*84	\$4.00 MRC
Don't have to memorize individual phone numbers	*74 2-9#	N/A	\$2.00 MRC
Don't have to memorize individual phone numbers	*75 20-49#	N/A	\$3.00 MRC
Can avoid calling a 2nd party back; can get 2 parties to converse with you at once	Flash Button	N/A	\$4.00 MRC
Prevents unwanted charges (this option does not block toll free calling)	Service Change	Service Change	N/C
Won't have to miss or answer incoming calls whether on the phone or away from office	Dial office number press * then pass code	Service Change	\$8.00 MRC
Won't have to miss or answer incoming calls whether on the phone or away from office	Dial office number press * then pass code	Service Change	\$10.00 MRC

FEATURES

SERVICE	FEATURE
Anonymous Call Rejection	Phone calls received with the private or anonymous designation can be sent an announcement stating blocked calls are not accepted and the call needs to be unblocked to go through
Call Forward Busy Line	Forwards all incoming calls when your line is busy
Call Forward Busy/ No Answer	Forwards all incoming calls when your line is busy or unanswered
Call Forward Selective	Forwards up to 12 selected incoming calls to a designated number
Call Forward Variable	Forwards all incoming calls to a designated number
Call Return	Supplies the number, date, and time of most recent incoming call and offers the option to automatically return the call (available IntraLATA only)
Call Screening	Auto-routes up to 12 selected incoming calls to a polite message stating calls are not being accepted at this time
Call Trace	Initiates a trace of the most recent incoming call (customer initiated - not related to CALEA or law enforcement activity)
Call Waiting/ Cancel Call Waiting	Identifies incoming calls via an audible signal while on a call and allows the Call Waiting feature to be temporarily disabled
Call Waiting with Caller ID	Identifies incoming calls via an audible signal while on a call and displays incoming caller information. Must have a Caller ID capable phone and/or display unit. **Must have CW + CID
Caller ID	Displays incoming caller information. Must have a Caller ID capable phone and/or display unit
Caller ID Blocking	Prevents outgoing information from being displayed on end user's Caller ID unit on a per-call basis
Custom Ring	Identifies selected incoming calls with a custom ring
Distinctive Ring	Allows for 2 distinct phone numbers on 1 phone line
Hunt Group	Allows multiple lines to all act as a single group - this is a per line feature and will be charged per line
Repeat Dialing	Automatically redials a specified busy outgoing number until the line is free (available IntraLATA only)
Selective Call Acceptance	Limits incoming calls up to 12 designated numbers and auto-routes all other calls to a polite message stating calls are not being accepted at this time
Speed Dial 8	Allows a one-digit keypad dialing for up to 8 frequently dialed numbers
Speed Dial 30	Allows two-digit keypad dialing for up to 30 frequently dialed numbers
3-way Calling	Allows subscribers to talk with 2 different parties simultaneously
Toll Restriction	Provides the ability to block the following outbound long distance calls: 1+, 0+, 10-10-XXX and International calls for no additional charge
Voice Mail Basic	Allows incoming callers to leave up to 30 retrievable 4.5-minute messages which can be stored for up to 15 days
Voice Mail Deluxe	Allows incoming callers to leave up to 45 retrievable 5-minute messages which can be stored for up to 31 days in up to 4 distinct mail boxes with pager notification

NON-RECURRING CHARGES

SERVICE	DESCRIPTION	RATE
New Installation	Service Connection (up to 2 lines)	\$49.00
Add a Telephone Line to an Existing, Active Account	Service Connection (includes \$45.00 dispatch fee)	\$80.00
Reconnection	Restore service after a voluntary disconnection	\$30.00
Non-Pay Reconnection	Restore service after disconnection for non-payment (not temporary suspension)	\$60.00
Additional New Phone Jack	Install a new phone jack (includes \$45.00 dispatch fee)	\$75.00
Reconfigure an Existing Jack	Change the telephone line associated with an existing jack (includes \$45.00 dispatch fee)	\$70.00
Repair/Maintenance	Regular Time: 8 am - 8 pm Monday - Saturday Overtime: 8 pm - 8 am Monday - Saturday Premium Time: Sundays and Holidays	\$115.00 per visit \$175.00 per visit \$230.00 per visit NOTE: for customer-caused incidents
Non-Sufficient Funds Charge	Charge for returned checks	\$25.00

[Close window](#)

AT&T Coverage Viewer

AT&T's wireless network has the largest digital voice and data coverage in America. Enter your location to see coverage in your area. You can zoom in and re-center the map by clicking on it.

- [Address](#)
- [Latitude\Longitude](#)

Address

Coverage last updated on: 12/10/07.
Map depicts an approximation of coverage.
[Learn More](#)

[International including Canada & Mexico](#)

Rate Plan and Service Maps

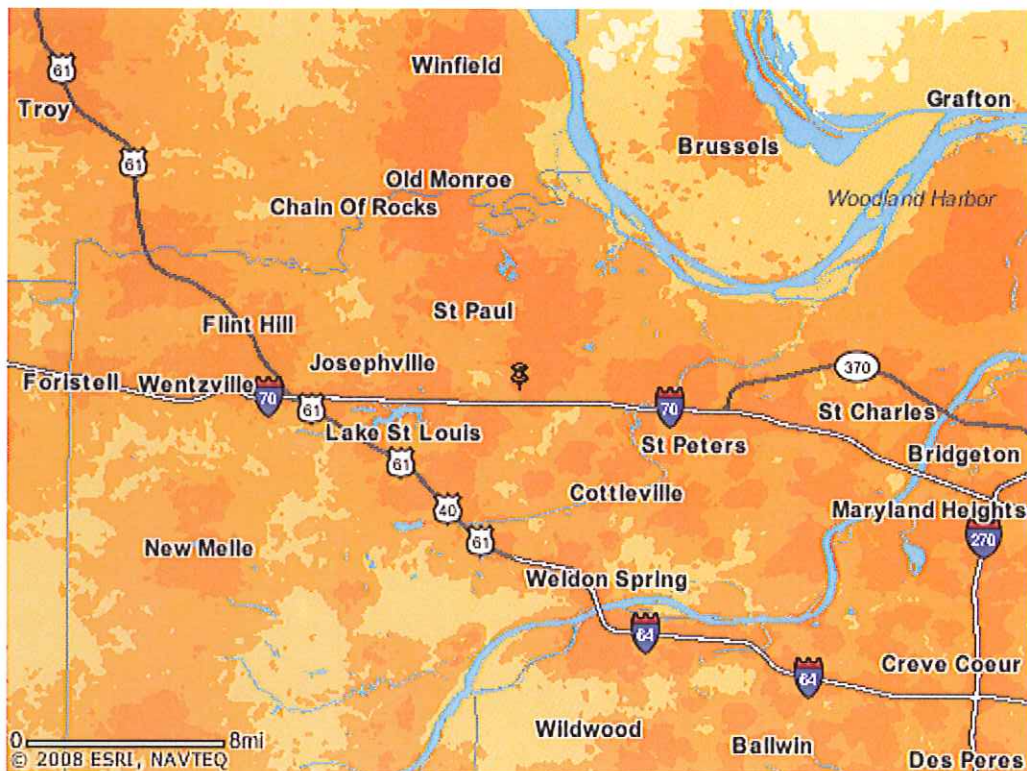
[AT&T Nation GSM and FamilyTalk™](#)

[GoPhone Pay As You Go](#)

[GoPhone Pick Your Plan](#)

Coverage Type

- [Voice](#)
- [Data](#)
- [GoPhone](#)
- [Smart Limits](#)



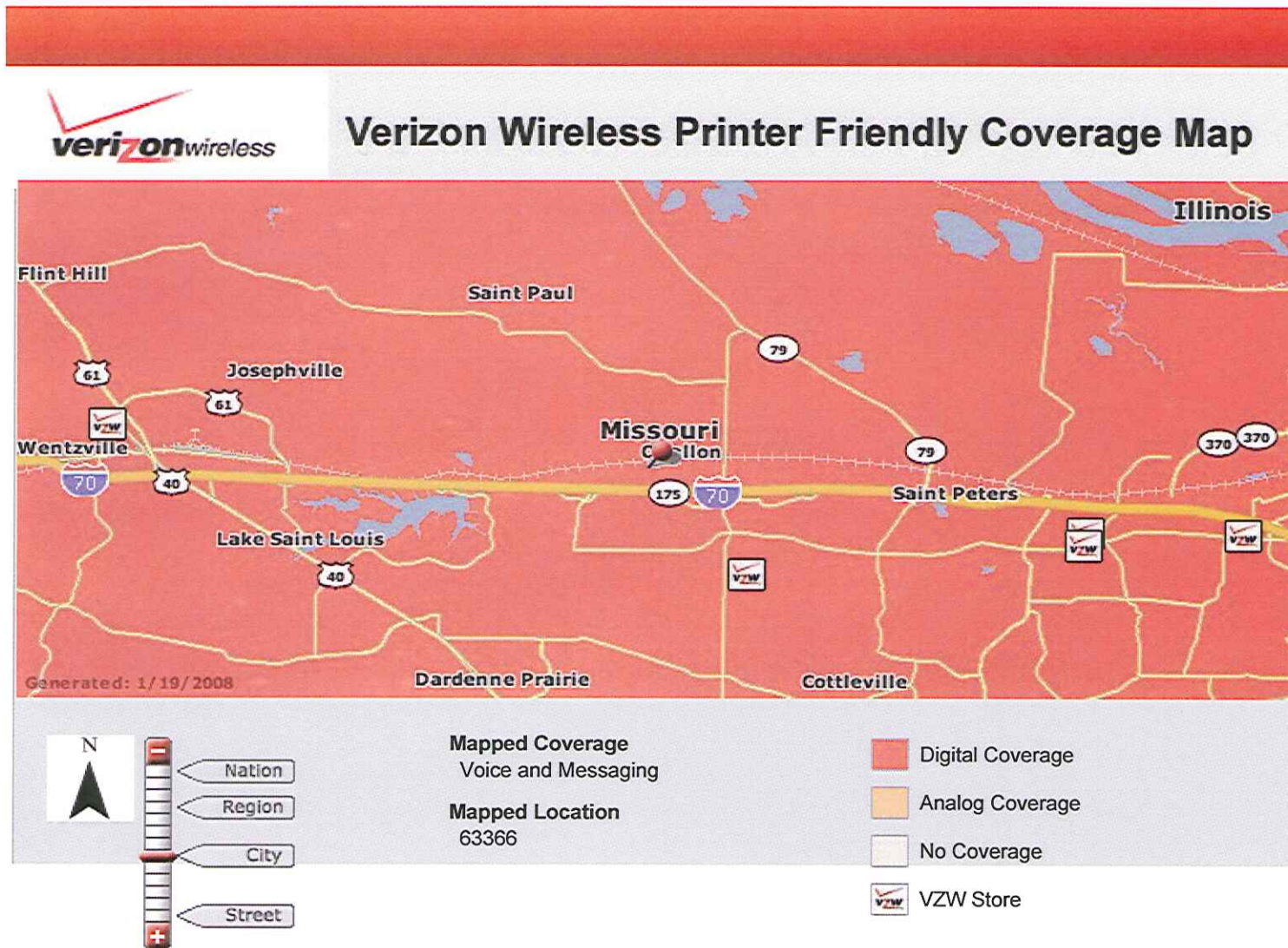
- ☒ Zoom and Re-center
- ☐ Re-center Only
- [Print Map](#)

Voice Coverage Legend

- ☒ 3G/Mobile Broadband Coverage
- [Best](#) ☐ Show 3G Coverage(in select areas)
- ☒ Good
- ☒ Moderate
- ☒ Partner
- ☐ No Service Visible when zoomed into City level and closer Available
- [3G Coverage Available](#)

Important Information About the Coverage Map

Map may include areas served by unaffiliated carriers, and may depict their licensed area rather than an approximation of the coverage there. Actual coverage area may differ substantially from map graphics, and coverage may be affected by such things as terrain, weather, foliage, buildings and other construction, signal strength, customer equipment and other factors. AT&T does not guarantee coverage. Charges will be based on the location of the site receiving and transmitting the call, not the location of the subscriber.

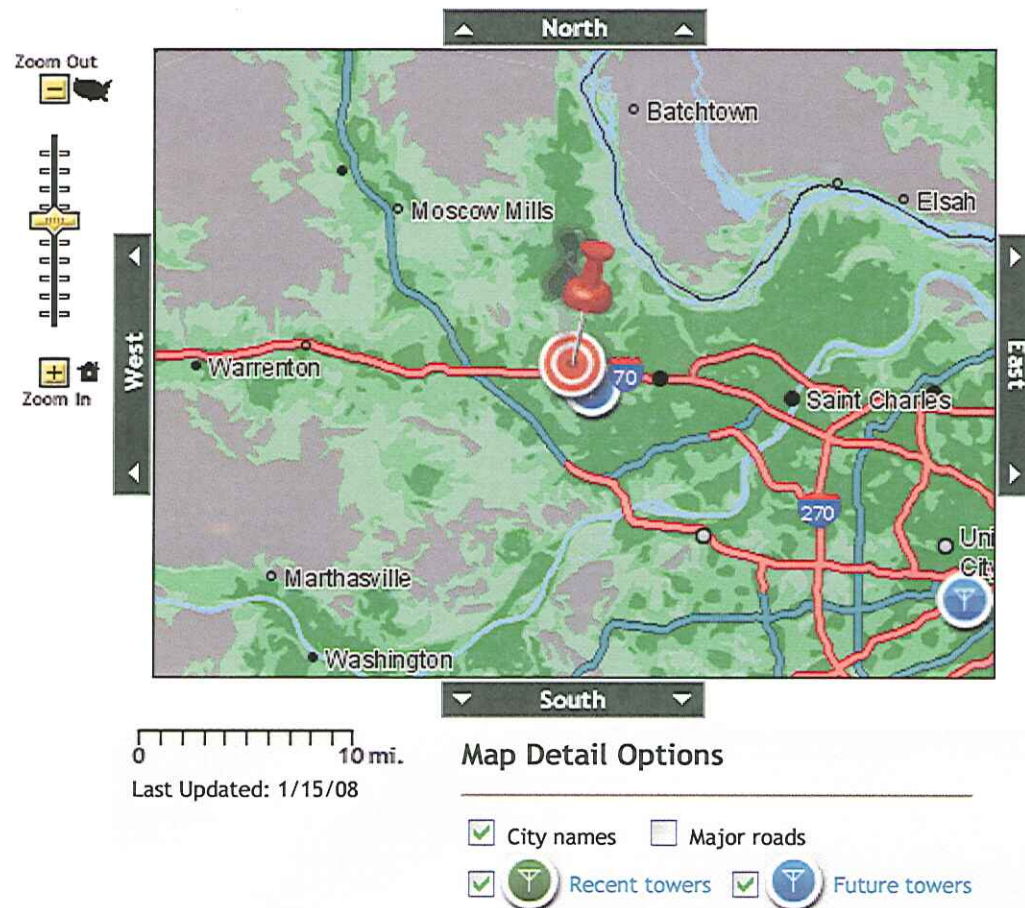


[Sprint.com](#) | [Business](#) | [Find a Store](#) | [About Us](#) | [Contact Us](#)[Shop](#)[MySprint](#)[Digital Lounge](#)[Support](#)

Enter your search question here

[Search](#)[Phones](#) | [Plans](#) | [Services](#) | [Accessories](#) | [Promotions](#) | [Coverage Maps](#) | [Shopping Cart](#)

Sprint Coverage Tool



55 Map a location

Enter as much information as you can or want.
Address or Intersection:

City: State: ZIP Code:

Choose a state 63366

[Clear](#) [Map It](#)

[Sprint also offers roaming coverage world. > Learn more](#)

Coverage Details

Voice Coverage

Get clear voice service across the U.S. with the secure, all-digital network. [Learn more](#)

[Sprint Devices](#) [Nextel Devices](#) [PowerSource Devices](#)

Sprint
Make clear calls across the country.

Sprint voice coverage:

Best Good Fair

Sprint coverage - quality not available

Roaming

Data, Email, and Multimedia

Direct

Exhibit D
Section 2: Local Number Porting Report

NP