

107
Featherstone, Cary

From: Braun, Susan [Susan.Braun@aquila.com]
; Monday, October 16, 2006 1:18 PM
To: Mantle, Lena; McDuffey, Mack; Imhoff, Tom; Featherstone, Cary
Cc: stucon@fcplaw.com; DonaldCEDLLC@sbcglobal.net; dcooper@brydonlaw.com; Tracy, Matt; Clemens, Gary
Subject: Quarterly Cost Adjustment Filing for Q306
Attachments: QCA Q306 Letter.pdf; QCA Q306 Tariff.pdf; QCA Q306 Calculation.pdf; QCA - Q306.xls;
MoSteamQCA200610Redline.doc

The attached documents were filed today in EFIS to adjust the QCA for Aquila Networks - L&P industrial steam customers per the Stipulation and Agreement in HR-2005-0450. The tracking number for the tariff is YH-2007-0027, and the Case No. is HR-2007-0028. Also attached, is the work paper detail supporting the QCA -Q306 calculation and the redline version of the tariff. If you have any questions, please do not hesitate to give me a call.

<<QCA Q306 Letter.pdf>> <<QCA Q306 Tariff.pdf>> <<QCA Q306 Calculation.pdf>> <<QCA - Q306.xls>>
<<MoSteamQCA200610Redline.doc>>

Thanks,

Susan Braun
MO-Regulatory Services
Aquila, Inc.
susan.braun@aquila.com
Ph: 816-467-3808
Fax: 816-467-9808

Exhibit No. 107
Date 11-18-10 Reporter JV
File No. P0 HC-2010-0235

7/16/2007

Susan Braun
Manager - Missouri
Regulatory Services

Aquila Networks
MSC 8-175
20 West 9th Street
Kansas City, MO 64105
816-467-3808
816-467-9808 fax
susan.braun@aquila.com



Aquila

October 16, 2006

Ms. Colleen Dale
Missouri Public Service Commission
200 Madison Street, Suite 100
P.O. Box 360
Jefferson City, MO 65102-0360

Re: HR-2007-0028

Ms. Dale:

Filed through EFIS is the following steam tariff sheet for filing on behalf of Aquila, Inc., d/b/a Aquila Networks -- L&P ("L&P"), providing the current Quarterly Cost Adjustment initiated in Case No. HR-2007-0028. The tariff sheet, listed below, has an effective date of December 1, 2006.

Also filed are two worksheets showing the calculation of the new rate.

Aquila Networks, PSC Mo. No. 1, Steam Rates, Effective December 1, 2006
2nd Revised Sheet No. 6.5, canceling 1st Revised Sheet No. 6.5

Attachments

cc: Office of the Public Counsel

STATE OF MISSOURI, PUBLIC SERVICE COMMISSION

P.S.C. MO. No. 1 2nd Revised Sheet No. 6.5
 Canceling P.S.C. MO. No. 1 1st Revised Sheet No. 6.5

Aquila, Inc., dba

AQUILA NETWORKS

KANSAS CITY, MO 64138

For St. Joseph, MO & Environs

QUARTERLY COST ADJUSTMENT RIDER (Continued)
STEAM

RATE:

Current Quarterly Cost Adjustment Table:

<u>Period</u>	<u>First Effective Date</u>	<u>Last Effective Date</u>	<u>CQCA (by Quarter)</u>
2006 Q3	12/1/2006	11/30/2007	(\$0.0924)
2006 Q2	9/1/2006	8/31/2007	\$0.0074

Reconciliation Table:

<u>Period</u>	<u>First Effective Date</u>	<u>Months</u>	<u>Last Effective Date</u>	<u>Monthly Recon (by Quarter)</u>
2006 Q3				
2006 Q2				

Quarterly Cost Adjustment Table:

<u>Period</u>	<u>First Effective Date</u>	<u>Last Effective Date</u>	<u>Monthly QCA</u>
2006 Q3	12/1/2006	2/28/2007	(\$0.0850)
2006 Q2	9/1/2006	11/30/2006	\$0.0074

Credits are shown in parentheses, e.g. (\$.05).

Issued: October 16, 2006

Issued by: Gary Clemens, Regulatory Services

Effective: December 1, 2006

Total Steam mmBtu Sales - 2005

	Apr	May	Jun	Jul	Aug	Sep	Oct	Nov	Dec	Jan	Feb	Mar	Total
Fuel Costs - 2006	686,093	649,717	621,350	718,562	801,879	642,378	0	0	0	0	0	0	4,119,979
Coal Costs - 2006	375,339	346,688	304,349	236,870	202,974	303,493	-	-	-	-	-	-	-
Gas Costs - 2006	297,344	272,149	233,521	369,821	545,505	267,325	-	-	-	-	-	-	-
Oil Costs - 2006	-	-	-	-	-	-	-	-	-	-	-	-	-
Hedge Costs - 2006	13,410	30,880	83,480	111,870	53,400	71,560	-	-	-	-	-	-	-
Coal mmBtu Input Btr Nos. 5	183,325	190,085	152,100	129,701	123,344	181,011	-	-	-	-	-	-	959,566
Gas mmBtu Input Btr Nos. 1-5	41,605	39,595	36,421	55,337	81,273	34,538	-	-	-	-	-	-	283,769
No. 2 Oil mmBtu Input Btr Nos. 1-4	-	-	-	-	-	-	-	-	-	-	-	-	0
Btr 1-5 Fuel to Steam Input	224,930	229,680	188,521	185,038	204,617	215,549	0	0	0	0	0	0	1,248,335

Production Test - Q1
Production Test - Q2
Production Test - Q3
Production Test - Q4

mmBtu	525,510	434,056	61,639										
mmBtu		959,566	93,248										
mmBtu													

Production Coal Costs - Q1
Production Coal Costs - Q2
Production Coal Costs - Q3
Production Coal Costs - Q4
Production Gas Costs - Q1
Production Gas Costs - Q2
Production Gas Costs - Q3
Production Gas Costs - Q4

mmBtu		1,7125											
mmBtu		1,8443											
mmBtu		8,2939											
mmBtu		8,1389											

Appendix D

Production Standards - Q1
Production Standards - Q2
Production Standards - Q3
Production Standards - Q4

mmBtu	202,635	195,170	159,314	177,341	198,924	188,724	187,981	187,887	190,423	110,912	188,695	195,088	2,184,104
mmBtu			495,695			495,695			495,695			495,695	
mmBtu						1,052,814			1,052,814			1,052,814	
mmBtu									1,617,803			1,617,803	
mmBtu												2,184,104	

Total Steam mmBtu Sales - 2006

mmBtu	177,967	187,426	165,480	166,451	175,898	172,333	0	0	0	0	0	0	1,045,535
-------	---------	---------	---------	---------	---------	---------	---	---	---	---	---	---	-----------

Quarterly Fuel Costs - Actual
Production Standards - Coal
Production Standards - Gas
Quarterly Fuel Costs - Adjusted
Quarterly Btr 1-5 Fuel to Steam Input
Base fuel amount (per million BTU)
Quarterly Fuel Costs - Collected
(Over) or Under Collected Fuel Costs
Reflect 80% change in actual fuel costs
Rolling 12-months Steam Btu Sales
Quarterly Cost Adjustment
Cumulative - QCA

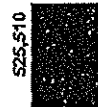
\$	1,957,160	2,162,819	159,691				0	0	0	0	0	0	0
\$	0	(773,388)	1,549,121				0	0	0	0	0	0	0
mmBtu	643,131	605,204	2,5997				0	0	0	0	0	0	0
mmBtu	3,0492	3,0050	3,0050	3,0050	3,0050	3,0050	3,0050	3,0050	3,0050	3,0050	3,0050	3,0050	3,0050
\$	1,932,609	1,818,638	24,551				0	0	0	0	0	0	0
\$	24,551	(269,517)	(215,613)				0	0	0	0	0	0	0
mmBtu	19,641	2,333,677	(0,0924)				0	0	0	0	0	0	0
mmBtu	2,438,370	(0,0850)					0	0	0	0	0	0	0
mmBtu	0,0074						0	0	0	0	0	0	0
mmBtu	0,0074						0	0	0	0	0	0	0

(Note: (1,625) carry forward from March 6-31)

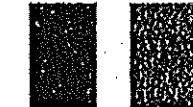
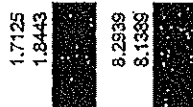
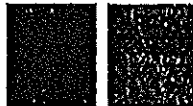
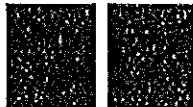
Total Steam mmBtu Sales - 2005

	Apr	May	Jun	Jul	Sep	Oct	Nov	Dec	Jan	Feb	Mar	Total
	153,595	152,746	135,482	143,887	150,013	147,904	156,683	174,829	177,691	155,112	183,223	1,897,324
Fuel Costs - 2006	\$ 686,093	\$ 649,717	\$ 621,350	\$ 718,562	\$ 801,879	\$ 642,378	\$ 0	\$ 0	\$ 0	\$ 0	\$ 0	\$ 4,119,379
Coal Costs - 2006	\$ 375,339	\$ 346,688	\$ 304,349	\$ 236,870	\$ 202,974	\$ 303,493	\$ -	\$ -	\$ -	\$ -	\$ -	\$ -
Gas Costs - 2006	\$ 297,344	\$ 272,149	\$ 293,521	\$ 369,821	\$ 545,505	\$ 267,325	\$ -	\$ -	\$ -	\$ -	\$ -	\$ -
Oil Costs - 2006	\$ -	\$ -	\$ -	\$ -	\$ -	\$ -	\$ -	\$ -	\$ -	\$ -	\$ -	\$ -
Hedge Costs - 2006	\$ 13,410	\$ 30,860	\$ 83,480	\$ 111,870	\$ 53,400	\$ 71,560	\$ -	\$ -	\$ -	\$ -	\$ -	\$ -
Coal mmBtu Input Bir Nos. 5	mmBtu 183,325	mmBtu 190,085	mmBtu 152,100	mmBtu 129,701	mmBtu 123,344	mmBtu 181,011	mmBtu -	mmBtu -	mmBtu -	mmBtu -	mmBtu -	mmBtu 959,566
Gas mmBtu Input Bir Nos. 1-5	mmBtu 41,605	mmBtu 39,595	mmBtu 36,421	mmBtu 55,337	mmBtu 81,273	mmBtu 34,538	mmBtu -	mmBtu -	mmBtu -	mmBtu -	mmBtu -	mmBtu 288,769
No. 2 Oil mmBtu Input Bir Nos. 1-4	mmBtu -	mmBtu -	mmBtu -	mmBtu -	mmBtu -	mmBtu -	mmBtu -	mmBtu -	mmBtu -	mmBtu -	mmBtu -	mmBtu 0
Bir 1-5 Fuel to Steam Input	mmBtu 224,930	mmBtu 229,680	mmBtu 188,521	mmBtu 185,038	mmBtu 204,617	mmBtu 215,549	mmBtu 0	mmBtu 0	mmBtu 0	mmBtu 0	mmBtu 0	mmBtu 1,243,335

Production Test - Q1
 Production Test - Q2
 Production Test - Q3
 Production Test - Q4

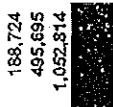
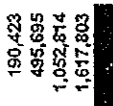
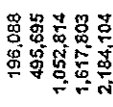


Production Coal Costs - Q1
 Production Coal Costs - Q2
 Production Coal Costs - Q3
 Production Coal Costs - Q4
 Production Gas Costs - Q1
 Production Gas Costs - Q2
 Production Gas Costs - Q3
 Production Gas Costs - Q4



Appendix D

Production Standards - Q1
 Production Standards - Q2
 Production Standards - Q3
 Production Standards - Q4



Total Steam mmBtu Sales - 2006

	Apr	May	Jun	Jul	Sep	Oct	Nov	Dec	Jan	Feb	Mar	Total
	177,967	187,426	165,450	166,451	175,896	172,333	0	0	0	0	0	1,045,535
Quarterly Fuel Costs - Actual	\$ -	\$ -	\$ 1,957,160	\$ -	\$ 2,162,819	\$ -	\$ -	\$ -	\$ -	\$ -	\$ -	\$ -
Production Standards - Coal	mmBtu -	mmBtu -	mmBtu 0	mmBtu -	mmBtu 158,691	mmBtu -	mmBtu -	mmBtu -	mmBtu -	mmBtu -	mmBtu -	mmBtu -
Production Standards - Gas	\$ -	\$ -	\$ -	\$ -	\$ (773,388)	\$ -	\$ -	\$ -	\$ -	\$ -	\$ -	\$ -
Quarterly Fuel Costs - Adjusted	mmBtu -	mmBtu -	mmBtu 1,957,160	mmBtu -	mmBtu 1,349,121	mmBtu -	mmBtu -	mmBtu -	mmBtu -	mmBtu -	mmBtu -	mmBtu -
Quarterly Bir 1-5 Fuel to Steam Input	mmBtu -	mmBtu -	mmBtu 643,131	mmBtu -	mmBtu 605,204	mmBtu -	mmBtu -	mmBtu -	mmBtu -	mmBtu -	mmBtu -	mmBtu -
Base fuel amount (per million BTU)	mmBtu -	mmBtu -	mmBtu 3,0432	mmBtu -	mmBtu 2,5597	mmBtu -	mmBtu -	mmBtu -	mmBtu -	mmBtu -	mmBtu -	mmBtu -
Quarterly Fuel Costs - Collected	\$ -	\$ -	\$ 3,0050	\$ 3,0050	\$ 3,0050	\$ 3,0050	\$ 3,0050	\$ 3,0050	\$ 3,0050	\$ 3,0050	\$ 3,0050	\$ 3,0050
(Over) or Under Collected Fuel Costs	\$ -	\$ -	\$ 1,932,609	\$ -	\$ 1,818,638	\$ -	\$ -	\$ -	\$ -	\$ -	\$ -	\$ -
Reflect 80% change in actual fuel costs	\$ -	\$ -	\$ 24,551	\$ -	\$ (269,517)	\$ -	\$ -	\$ -	\$ -	\$ -	\$ -	\$ -
Rolling 12-months Steam Btu Sales	mmBtu -	mmBtu -	mmBtu 19,641	mmBtu -	mmBtu (215,613)	mmBtu -	mmBtu -	mmBtu -	mmBtu -	mmBtu -	mmBtu -	mmBtu -
Quarterly Cost Adjustment	mmBtu -	mmBtu -	mmBtu 2,438,370	mmBtu -	mmBtu 2,333,677	mmBtu -	mmBtu -	mmBtu -	mmBtu -	mmBtu -	mmBtu -	mmBtu -
Cumulative - QCA	mmBtu -	mmBtu -	mmBtu 0.0074	mmBtu -	mmBtu (0.0924)	mmBtu -	mmBtu -	mmBtu -	mmBtu -	mmBtu -	mmBtu -	mmBtu -

Note: (1,625) carry forward from March 6-31.

Total Steam mmBtu Sales - 2005													
	Apr	May	Jun	Jul	Aug	Sep	Oct	Nov	Dec	Jan	Feb	Mar	Total
	153,595	152,746	135,482	143,887	150,013	147,904	156,883	154,069	174,829	177,691	165,112	185,313	1,897,324
Fuel Costs - 2006													
\$	696,093	649,717	621,350	718,562	801,879	642,378	0	0	0	0	0	0	4,119,979
Coal Costs - 2006													
\$	375,339	346,688	304,349	236,870	202,974	303,493	-	-	-	-	-	-	-
Gas Costs - 2006													
\$	297,344	272,149	233,521	369,821	545,505	267,325	-	-	-	-	-	-	-
Oil Costs - 2006													
\$	13,410	30,880	83,480	111,870	53,400	71,560	-	-	-	-	-	-	-
Hedge Costs - 2006													
mmBtu	183,325	190,085	152,100	129,701	129,344	181,011	-	-	-	-	-	-	959,566
Gas mmBtu Input Bir Nos. 1-5	41,605	39,595	36,421	55,337	81,273	34,538	-	-	-	-	-	-	288,769
mmBtu	-	-	-	-	-	-	-	-	-	-	-	-	0
No. 2 Oil mmBtu Input Bir Nos. 1-4	-	-	-	-	-	-	-	-	-	-	-	-	0
Bir 1-5 Fuel to Steam Input	224,930	229,680	188,521	185,038	204,617	215,549	0	0	0	0	0	0	1,248,335

Production Test - Q1	mmBtu	525,510	434,056	61,639									
Production Test - Q2	mmBtu		959,566	93,248									
Production Test - Q3	mmBtu												
Production Test - Q4	mmBtu												
Production Coal Costs - Q1			1,7125										
Production Coal Costs - Q2			1,8443										
Production Coal Costs - Q3													
Production Coal Costs - Q4													
Production Gas Costs - Q1			8,2939										
Production Gas Costs - Q2			8,1369										
Production Gas Costs - Q3													
Production Gas Costs - Q4													
Appendix D													
Production Standards - Q1	mmBtu	202,635	195,170	159,314	177,341	188,924	187,991	187,887	190,423	110,912	188,695	196,088	2,184,104
Production Standards - Q2	mmBtu			495,695		495,695			495,695			495,695	
Production Standards - Q3	mmBtu			1,052,814		1,052,814			1,052,814			1,052,814	
Production Standards - Q4	mmBtu								1,617,803			1,617,803	
Total Steam mmBtu Sales - 2006	mmBtu	177,957	187,426	165,450	186,451	175,898	0	0	0	0	0	0	1,045,535

Quarterly Fuel Costs - Actual	\$	1,957,160	2,162,819										
Production Standards - Coal		0	159,691						0				0
Production Standards - Gas		0	(773,388)						0				0
Quarterly Fuel Costs - Adjusted	\$	1,957,160	1,549,121						0				0
Quarterly Bir 1-5 Fuel to Steam Input	mmBtu	643,131	605,204						#DIV/0!				0
Base fuel amount (per million BTU)	mmBtu	3,0432	2,5597						#DIV/0!				0
Quarterly Fuel Costs - Collected	mmBtu	3,0050	3,0050						3,0050				3,0050
(Over) or Under Collected Fuel Costs	\$	1,932,609	1,818,698						0				0
Reflect 80% change in actual fuel costs	\$	24,551	(269,517)						0				0
Rolling 12-months Steam Btu Sales	mmBtu	19,641	(215,613)						0				0
Quarterly Cost Adjustment		2,438,370	2,333,677						#DIV/0!				#DIV/0!
Cumulative - QCA		0.0074	(0.0924)										

Note: (1,825) carry forward from March 5-31.

Total Steam mmBtu Sales

	<u>2005</u>		<u>2006</u>
Jan	168,768	Jan	177,691
Feb	149,596	Feb	165,112
Mar	168,173	Mar	185,313
Apr	153,595	Apr	177,967
May	152,746	May	187,426
Jun	135,482	Jun	165,460
Jul	143,887	Jul	166,451
Aug	150,013	Aug	175,898
Sep	147,904	Sep	172,333
Oct	156,683	Oct	0
Nov	154,069	Nov	0
Dec	174,829	Dec	0
Total	1,855,745	Total	1,573,651

Rolling 12-months 1,986,354

<u>% by Quarter</u>			<u>05 - '06</u>
Q1	441,823	530,853	20.151%
Q2	441,804	514,682	16.496%
Q3	485,581	0	-100.000%
Q4	528,116	0	-100.000%

Pro-Forma Steam mmBtu Sales

	<u>2006F</u>	<u>2006F</u>
Jan	177,691	177,691
Feb	165,112	165,112
Mar	185,313	185,313
Apr	177,967	177,967
May	187,426	187,426
Jun	165,460	165,460
Jul	228,389	166,451
Aug	190,843	175,898
Sep	200,143	172,333
Oct	223,441	223,441
Nov	248,711	248,711
Dec	287,874	287,874
Total	2,438,370	2,309,677

[illegible]