

Legend

— Proposed Pipeline



1250 Wood Branch Park Drive, Ste. 300
Houston, Texas 77079
Phone (281) 493-5100 Fax: (281) 493-1047

Sendero Asset Management, LLC.
Proposed Branson to Aurora Pipeline
Vicinity Map
Lawrence, Barry, Stone, & Taney Counties, Missouri

0 6.5 13
Miles



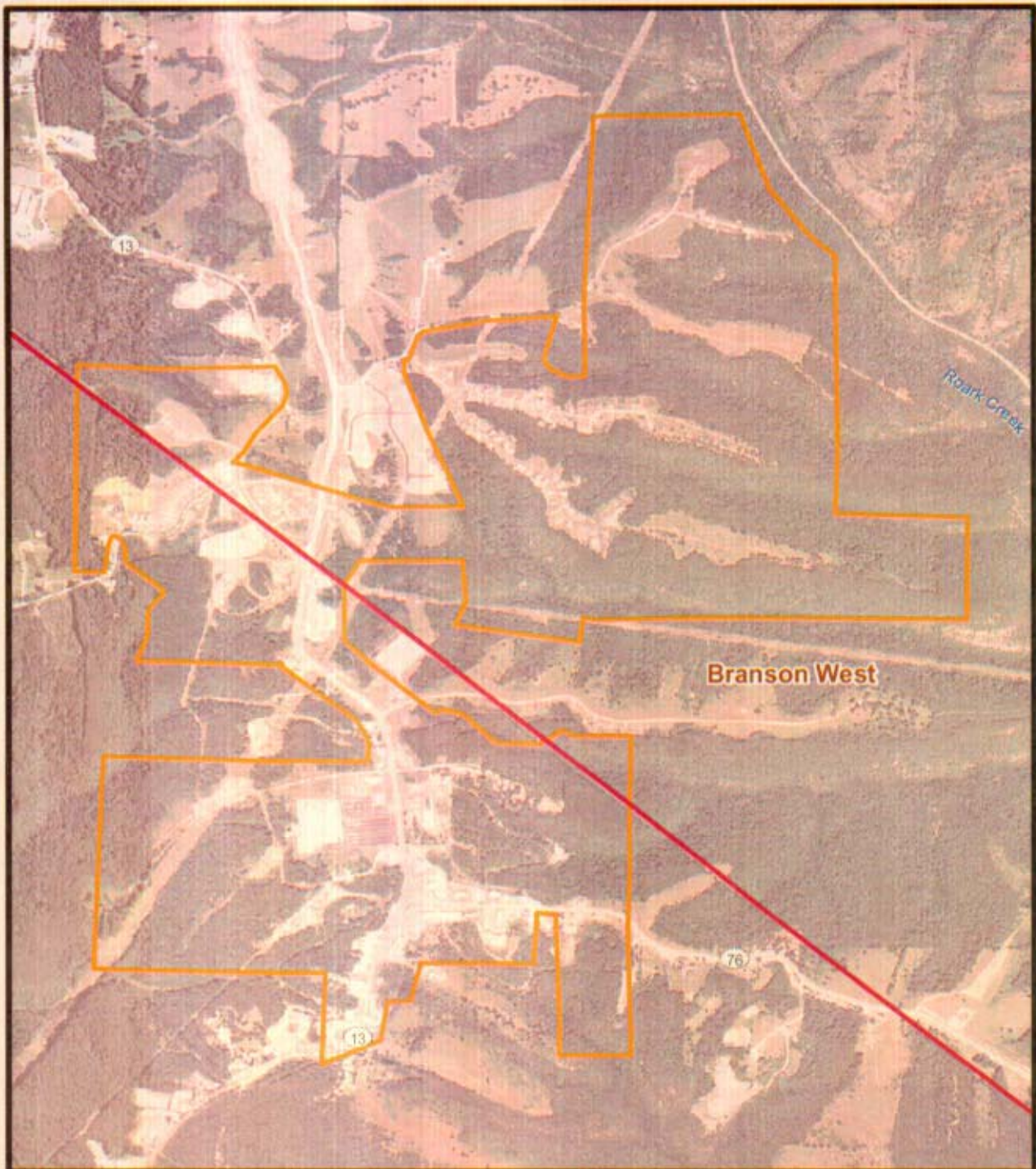
Prepared By: PBS&J/20952

Scale: 1" = 6.5 Miles

Job No.: 461364.02

Date: Aug 14, 2007

File: M:\461364_02\projects\mxd\A_vicinity.mxd



Legend

- Proposed Pipeline
- City Limits

0 2,000 4,000
Feet



1250 Wood Branch Park Drive, Ste. 300
Houston, Texas 77079
Phone (281) 493-5100 Fax: (281) 493-1047

Sendero Asset Management, LLC.
Proposed Branson to Aurora Pipeline
Branson West Aerial Map
Stone County, Missouri

Prepared By: PBS&J/20952

Scale: 1" = 2000'

Job No.: 461364.02

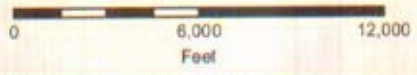
Date: Aug 14, 2007

File: M:\461364_02\projects\mxd\A_branson_west.mxd



Legend

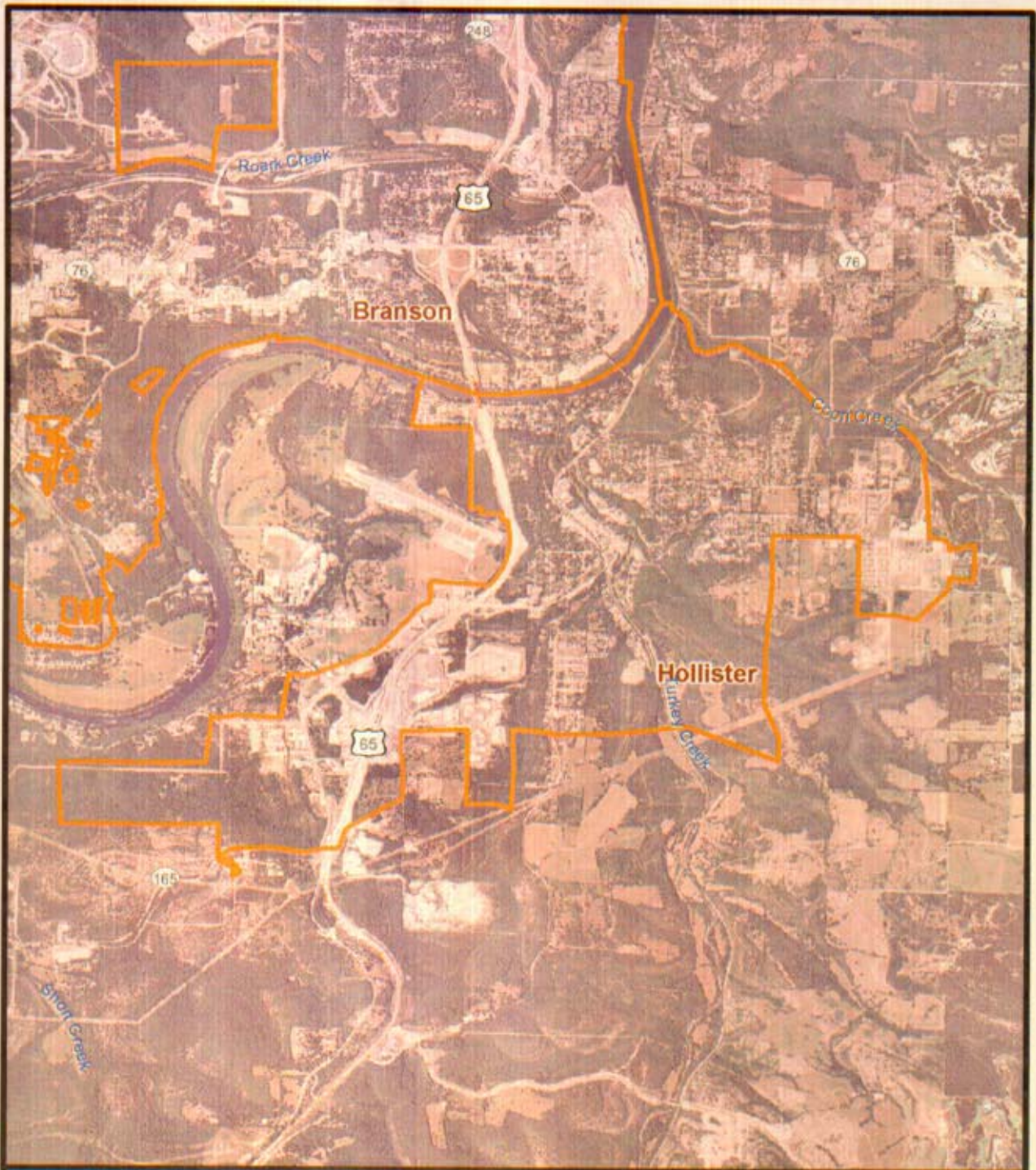
- Proposed Pipeline
- City Limits



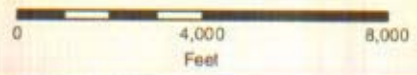
PBSJ 1250 Wood Branch Park Drive, Ste. 300
Houston, Texas 77079
Phone (281) 493-5100 Fax: (281) 493-1047

Sendero Asset Management, LLC.
Proposed Branson to Aurora Pipeline
Branson Aerial Map
Taney County, Missouri

Prepared By: PBS&J/20952	Scale: 1" = 6000'
Job No.: 461364.02	Date: Aug 14, 2007
File: M:\461364_02\projects\mxd\A_branson_west.mxd	



Legend
 City Limits



PBS&J 1250 Wood Branch Park Drive, Ste. 300
 Houston, Texas 77079
 Phone (281) 493-5100 Fax: (281) 493-1047

Sendero Asset Management, LLC.
 Proposed Branson to Aurora Pipeline
 Hollister Aerial Map
 Taney County, Missouri

Prepared By: PBS&J/20952	Scale: 1" = 4000'
Job No.: 461364.02	Date: Aug 14, 2007
File: M:\461364_02\projects\mxd\A_hollister.mxd	